

# INSTALLATION INSTRUCTIONS FOR WS (WALL MOUNT, SURFACE CONDUIT) OPTION WITH 5° UP-TILT

PHILIPS

GARDCO

## 100 SERIES PERFORMANCE SCONCES

IMPORTANT: READ ALL INSTRUCTIONS BEFORE PERFORMING ANY WORK.  
BE SURE ALL POWER IS OFF PRIOR TO INSTALLING LUMINAIRE.

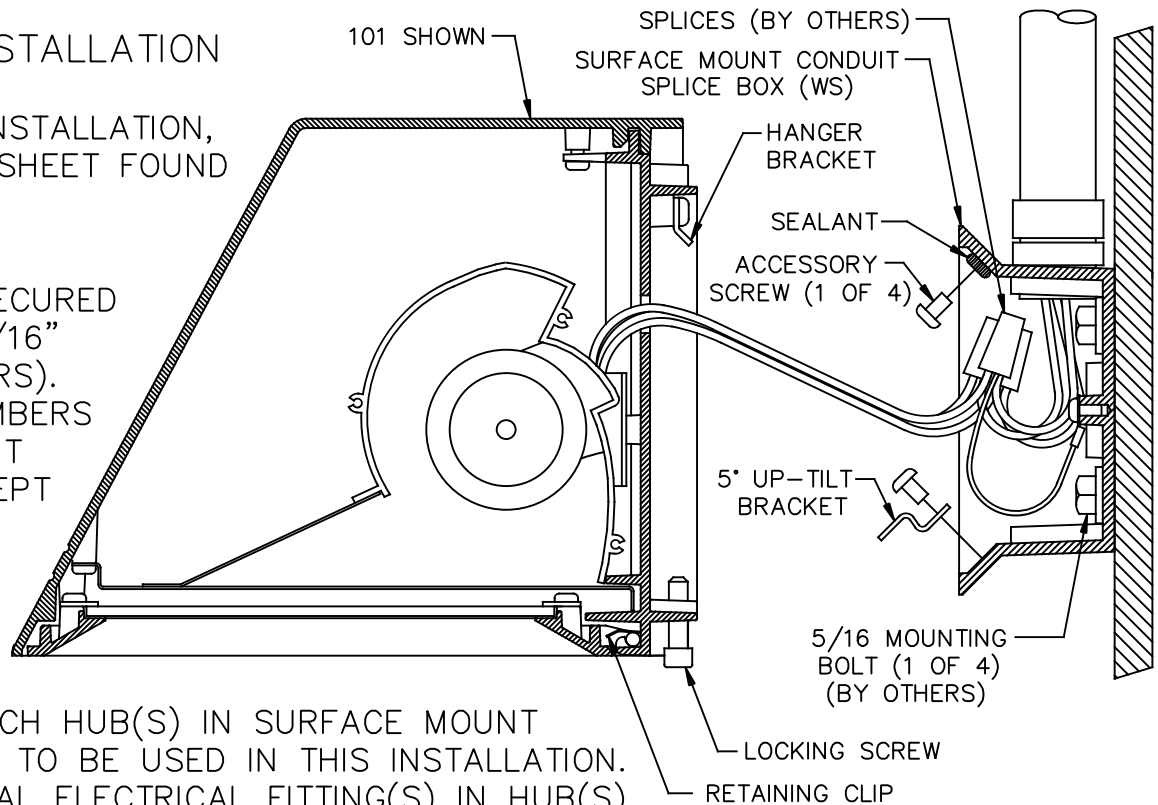
WARNING: LUMINAIRE MUST BE GROUNDED IN ACCORDANCE WITH  
APPROPRIATE CODES. FAILURE TO DO SO MAY RESULT IN  
SERIOUS INJURY.

### 5° UP-TILT INSTALLATION

(FOR STANDARD INSTALLATION,  
SEE INSTRUCTION SHEET FOUND  
WITH FIXTURE)

#### NOTE:

SPLICE BOX IS SECURED  
TO WALL WITH 5/16" BOLTS (BY OTHERS).  
STRUCTURAL MEMBERS  
MUST BE PRESENT  
IN WALL TO ACCEPT  
BOLTS.

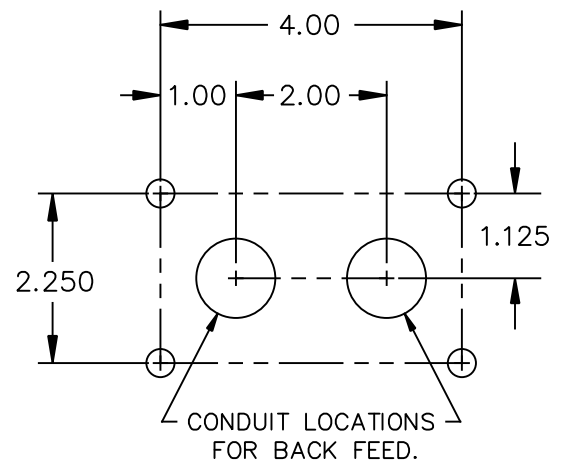


1. DETERMINE WHICH HUB(S) IN SURFACE MOUNT  
SPLICE BOX ARE TO BE USED IN THIS INSTALLATION.  
INSTALL AND SEAL ELECTRICAL FITTING(S) IN HUB(S).  
INSTALL AND SEAL PLUG(S) IN UNUSED HUB(S).  
INSTALL CONDUIT SECTION(S) INTO FITTINGS AS  
REQUIRED.

2. DETERMINE MOUNTING LOCATION OF SPLICE BOX.  
APPLY A BEAD OF SEALANT AROUND EACH  
MOUNTING HOLE ON THE OUTSIDE OF THE BOX.

FOR INSTALLATIONS WHERE CONDUIT ENTERS  
THROUGH THE BACK OF THE SPLICE BOX,  
APPLY A BEAD OF SEALANT ON THE OUTSIDE  
OF THE BOX AROUND THE CONDUIT HOLE USED.  
SECURE BOX TO WALL WITH 5/16" BOLTS  
(BY OTHERS) MAKING SURE BOX IS LEVEL.

3. COMPLETE CONDUIT INSTALLATION AND ROUTE  
SUPPLY WIRES INTO SPLICE BOX.



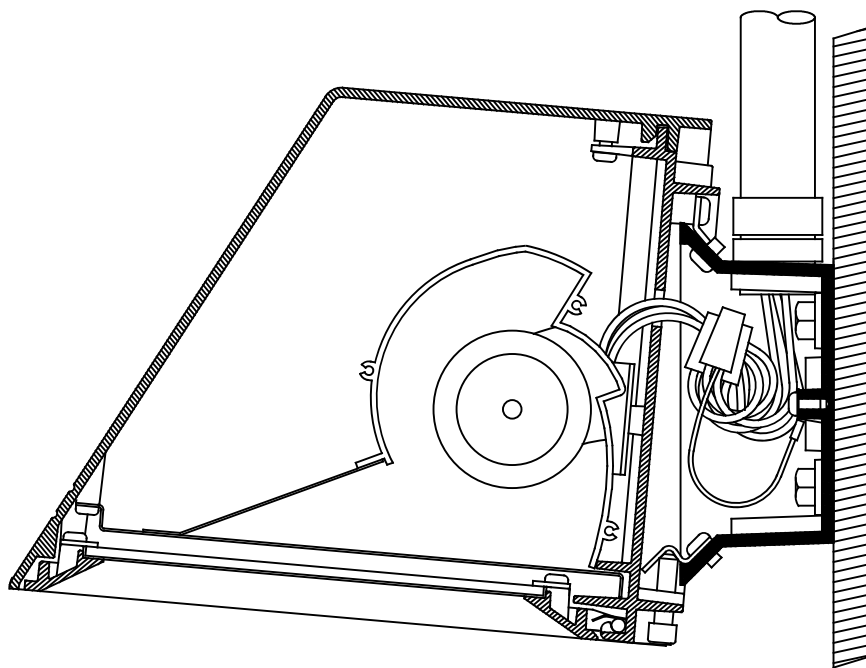
MOUNTING BOLT PATTERN

# INSTALLATION INSTRUCTIONS FOR WS (WALL MOUNT, SURFACE CONDUIT) OPTION WITH 5° UP-TILT

**PHILIPS**  
**GARDCO** 100 SERIES PERFORMANCE SCONCES

4. DISCARD MOUNTING BRACKET SUPPLIED WITH FIXTURE.
5. APPLY SEALANT AROUND THE TWO HOLES IN THE TOP ANGLED WALL OF THE SPLICE BOX. INSTALL TWO ACCESSORY SCREWS IN THESE HOLES. SECURE THE 5° UP-TILT BRACKET TO THE BOTTOM ANGLED WALL WITH THE TWO REMAINING ACCESSORY SCREWS.
6. MAKE ELECTRICAL CONNECTIONS. FIXTURE LINE TO SUPPLY LINE, COMMON TO COMMON AND GROUND TO GROUND INCLUDING SPLICE BOX GROUND.
7. PLACE SPLICES AND EXCESS WIRE IN SPLICE BOX. CAREFULLY ENGAGE HANGER BRACKET TO SPLICE BOX BEING CAREFUL NOT TO PINCH WIRES. EDGE OF HANGER BRACKET WILL BEAR AGAINST ACCESSORY SCREWS. ALLOW FIXTURE TO REST AGAINST 5° UP-TILT BRACKET. TIGHTEN LOCKING SCREWS.
8. UNSCREW LENS FRAME SCREWS. SLOWLY OPEN FRAME UNTIL IT HANGS FREE. INSTALL LAMP. CLOSE AND SECURE FRAME BEING CAREFUL NOT TO OVERTIGHTEN THE SCREWS.

NOTE: LENS FRAME ASSEMBLY IS REMOVABLE BY OPENING PARTIALLY, COMPRESSING RETAINING CLIPS WITH HINGE END OF FRAME AND PULLING FORWARD.



FIXTURE INSTALLED ON WS  
OPTION WITH 5° UP-TILT

