

INSTALLATION INSTRUCTIONS

G18 LUMINAIRE TO ROUND UTILITY POLE

IMPORTANT: Read all instructions before performing any work. Be sure **all power is off** prior to installing luminaires.

WARNING: Fixture must be grounded in accordance with appropriate codes. Failure to do so may result in serious injury.

NOTE: Pole Adaptor is secured to utility pole with 5/8" bolts, washers and 1" square nuts (by others) (fig. 1). Structural holes must be present in utility pole to accept bolts. See mounting "hole pattern" for bolt location.

1. Place luminaire with lens facing up on a non scratching surface. Unlatch door and slowly open as far as safety cable will allow. Disengage safety cable from door. Open door further until hinge clamp lock is accessible. Rotate hinge clamp lock to free hinge clamp (fig. 2). Pull hinge clamp away from hinge. Carefully rotate door toward the closed position until hinge disengages.
2. Place luminaire mounting surface against pole adaptor so that the mounting holes align. Secure luminaire using the 3/8" bolts, and split lockwashers supplied (fig. 3). Tighten bolts to 15ft-lbs.
3. Feed supply wires into utility pole. Make electrical connections and make sure luminaire is grounded in accordance with the applicable codes.
4. Aiming arrow on reflector must match aiming direction on site plan. If reflector rotation is required, loosen the (4) 8-32 phillips pan head screws that hold the reflector to the housing. Loosen the two thumb screws and slide latches to disengage (fig. 4). Remove reflector, reposition as desired and re-install.
5. Install lamp. Make sure the lamp type and wattage are as indicated on the product identification label on the reflector. Clear lamp required for optimum photometric performance.

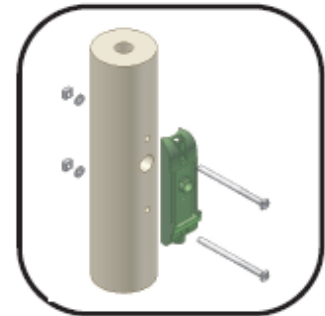


Fig. 1

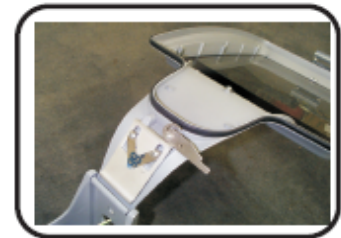


Fig. 2

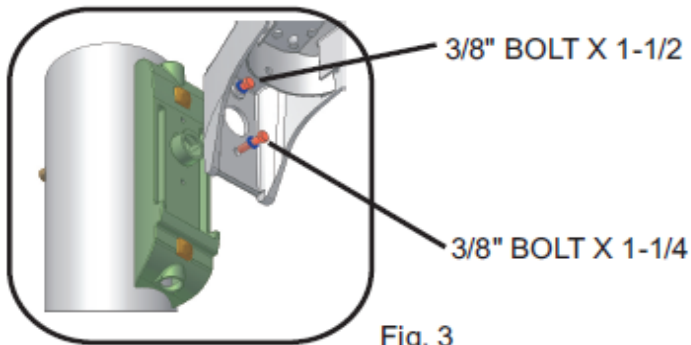


Fig. 3



Fig. 4

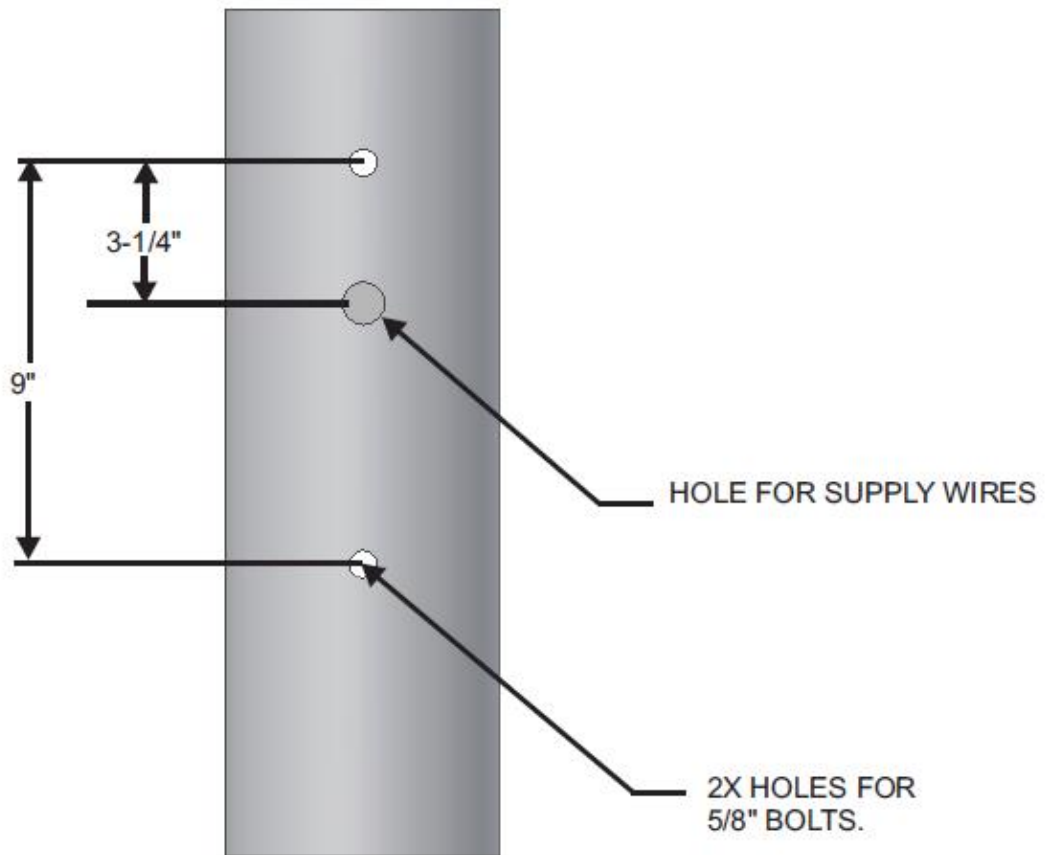
INSTALLATION INSTRUCTIONS

G18 LUMINAIRE TO ROUND UTILITY POLE

6. Re-install door by engaging the hinge end with the door in the almost closed position. Swing door open and lock the hinge clamp by returning the hinge clamp lock to its original position. Re-install safety cable. Close door making sure latch is fully engaged. (fig. 5)



Fig. 5



MOUNTING HOLE PATTERN