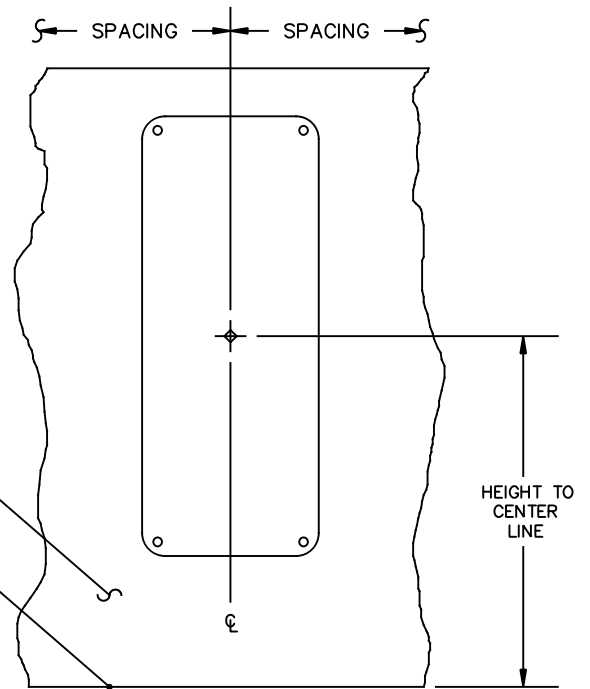
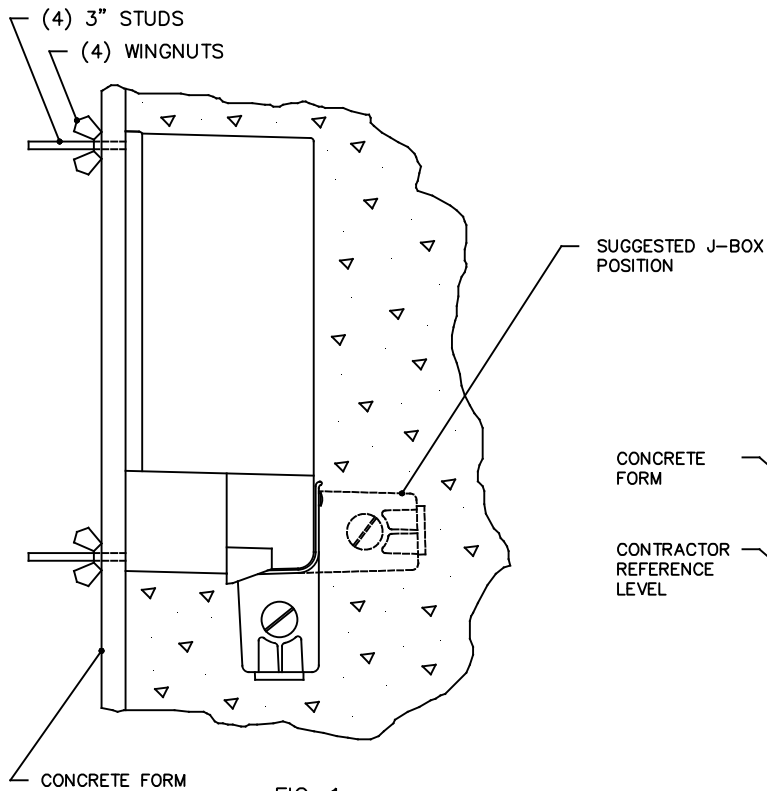
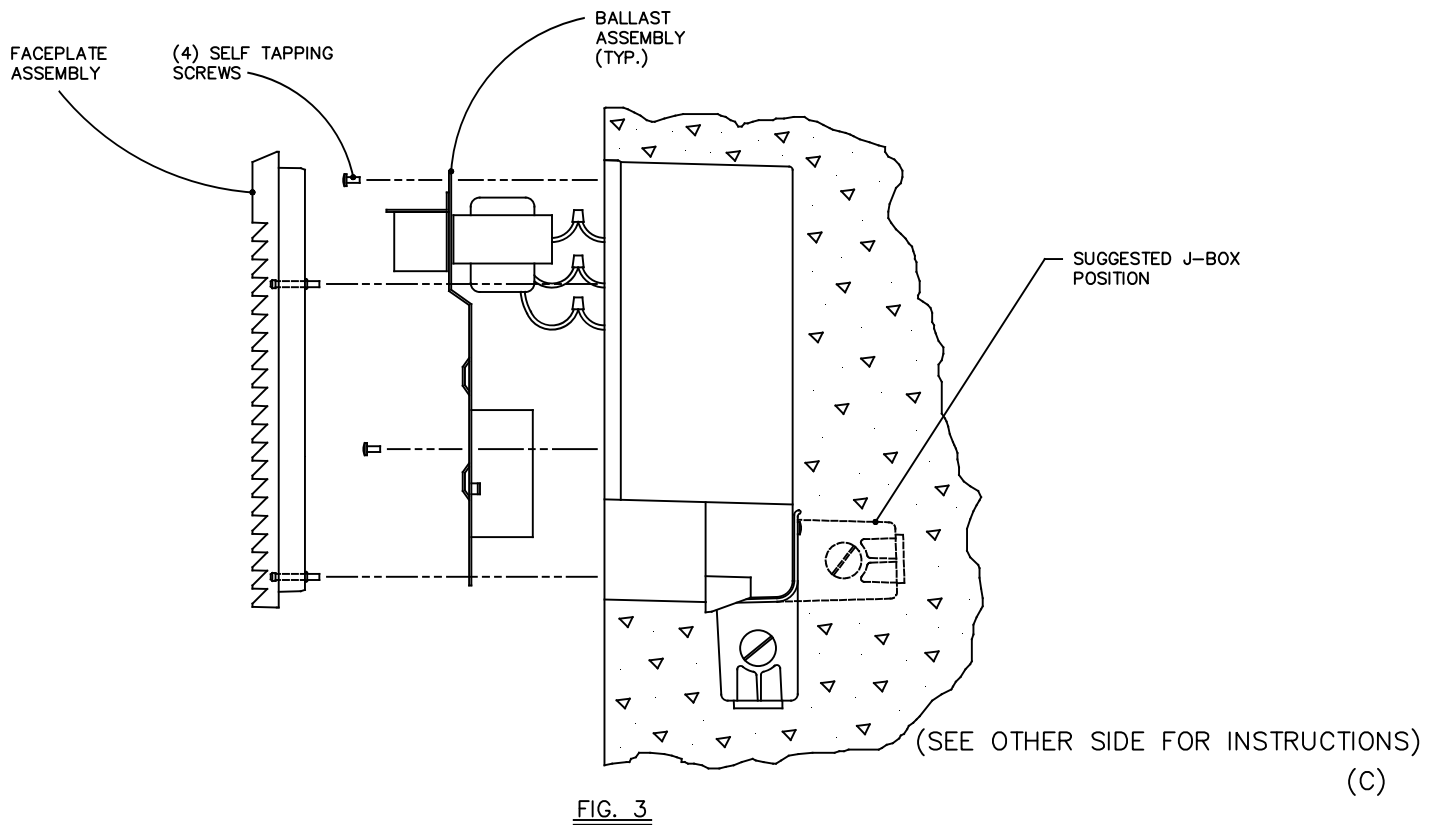


INSTALLATION INSTRUCTIONS

943 LINE CONCRETE CONSTRUCTION



NOTE: J-BOX COVER PLATE NOT SHOWN



INSTALLATION INSTRUCTIONS

943 LINE CONCRETE CONSTRUCTION

THESE INSTRUCTIONS APPLY TO MODEL 943 LUMINAIRES TO BE INSTALLED IN CONCRETE.

IMPORTANT!

BE SURE ALL POWER IS OFF PRIOR TO INSTALLING FIXTURES. READ ALL INSTRUCTIONS BEFORE PERFORMING ANY WORK.

Housing Installation

1. Remove housing assembly and mounting kit containing chipboard template, 3" locating studs, and wingnuts from shipping carton.
2. Attach the 3" locating studs to housing per fig. 1. Leave screws on outside of housing in place.
3. Repositioning the j-box per fig. 1 is suggested prior to installation, but not mandatory.
4. Use dimensions provided by site contractor to mark housing centerline locations on outside of concrete forms.
5. Position and level template over housing centerline from step 4 per fig. 2. Mark hole locations for 3" locating studs using template as a guide.
6. Drill holes through forms using 1/4" drill bit.
7. Install housing assembly on concrete side of forms. Insert 3" locator studs through the holes created in step 6 per fig. 1. Take care to orient housing per fig. 1 and arrows on housing. Secure with wingnuts from mounting kit provided.
* Note: The front of the housing will be flush with surface of the concrete by following the previous procedure. If a surface finish such as tiling is planned, it is suggested that allowances be made in mounting the housing prior to pouring concrete to insure flushness.
8. Install conduit, if used, to j-box 3/4 NPT threaded conduit connections. Only remove the plugs necessary to do the installation.
9. Supply circuit wiring to be installed per NEC or applicable local codes.
10. Remove wingnuts and studs once concrete has cured. This must be done prior to removing concrete forms.

IMPORTANT! AT ALL TIMES WIRING TO BE DONE PER THE NEC OR APPLICABLE LOCAL CODES.

Wiring, Ballast Assembly, and Face Plate Installation

1. Remove ballast assembly and face plate assembly from shipping carton.
2. Disconnect j-box cover plate from inside of housing assembly.
3. Connect one of the two housing ground pigtails (green) to the supply circuit ground lead and the other pigtail to the ballast assembly ground lead.
4. Connect the ballast tray phase lead (black) and neutral lead (white) to the supply circuit phase and neutral leads.
5. Dress excess wiring and push into j-box. Reinstall j-box cover to completely cover splices. Attach ballast assembly into housing per fig. 3 using (4) self tapping screws provided in the housing.
6. Install appropriately rated lamp (by others) into socket.
7. Remove face plate assembly from shipping carton and install with mounting screws per fig. 3. Be sure mounting screws are snug, but do not over tighten.
8. The circuit is now ready to energize.

(SEE OTHER SIDE FOR FIGURES)

(C)



© 2016 Philips Lighting Holding B.V. All Rights Reserved.
www.philips.com/luminaires

443561006180/A815322 REV. B

Philips Lighting North America
Corporation
200 Franklin Square Drive,
Somerset, NJ 08873, USA

Philips Lighting Canada Ltd.
281 Hillmount Road,
Markham ON, Canada L6C 2S3