

# INSTALLATION INSTRUCTIONS

## COLUMN ADAPTOR FOR 301 LINE CYLINDERS

IMPORTANT: READ ALL INSTRUCTIONS BEFORE PERFORMING ANY WORK.

BE SURE ALL POWER IS OFF PRIOR TO INSTALLING LUMINAIRE.

WARNING: LUMINAIRE MUST BE GROUNDED IN ACCORDANCE WITH APPROPRIATE CODES. FAILURE TO DO SO MAY RESULT IN SERIOUS INJURY.

### NOTE:

COLUMN ADAPTOR/SPLICE BOX IS SUITABLE FOR USE WITH NON-COMBUSTABLE COLUMNS ONLY.

1. IF SURFACE CONDUIT IS TO BE USED, REMOVE PIPE PLUGS FROM COLUMN ADAPTOR. INSTALL FITTINGS (BY OTHERS), MAKING SURE THEY ARE SEALED IF THEY ARE TO BE LOCATED ON THE TOP OF THE ADAPTOR (AS SHOWN IN FIG. 1).

IF CONDUIT OR SPLICE BOX IS RECESSED, REMOVE AND DISCARD COVER PLATE AND REFER TO FIG. 2.

2. APPLY A BEAD OF SEALANT (BY OTHERS) TO THE BACK OF THE ADAPTOR ADJACENT TO THE TOP AND SIDE EDGES. PLACE THE ADAPTOR AGAINST THE COLUMN AND SECURE WITH FOUR 5/16" BOLTS (BY OTHERS).

3. FOR SURFACE CONDUIT INSTALLATIONS, ASSEMBLE CONDUIT AS REQUIRED AND PULL SUPPLY WIRE INTO ADAPTOR.

4. APPLY CORD CAULKING (SUPPLIED) TO THE TOP AND SIDE EDGES OF THE ADAPTOR AS SHOWN.

5. MAKE ELECTRICAL CONNECTIONS. LUMINAIRE LINE TO SUPPLY LINE, COMMON TO COMMON AND GROUND TO GROUND.

6. PLACE SPLICES AND EXCESS WIRE IN ADAPTOR. CAREFULLY ENGAGE HANGER BRACKET TO ADAPTOR BEING CAREFUL NOT TO PINCH WIRES. ALLOW LUMINAIRE

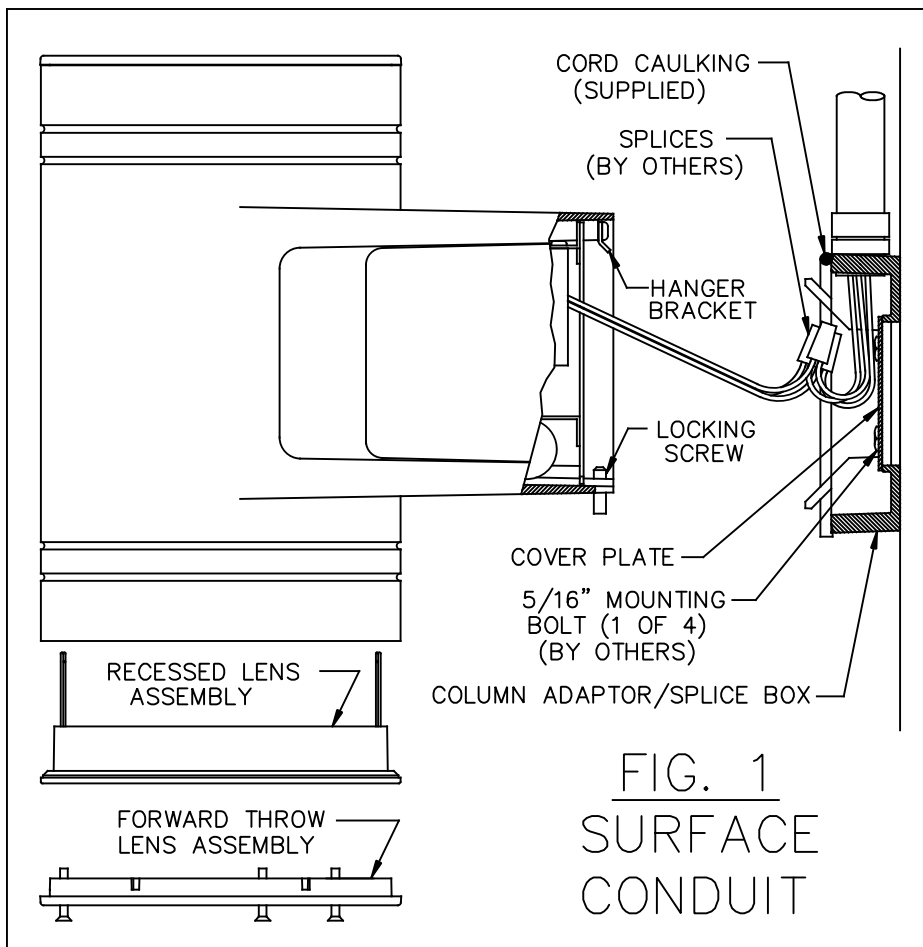
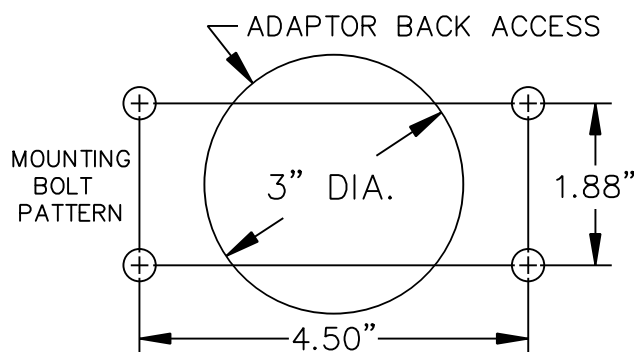


FIG. 1  
SURFACE  
CONDUIT

NOTE: COLUMN ADAPTOR/SPLICE BOX IS SECURED TO COLUMN WITH 5/16" BOLTS (BY OTHERS). STRUCTURAL MEMBERS MUST BE PRESENT IN COLUMN TO ACCEPT BOLTS.



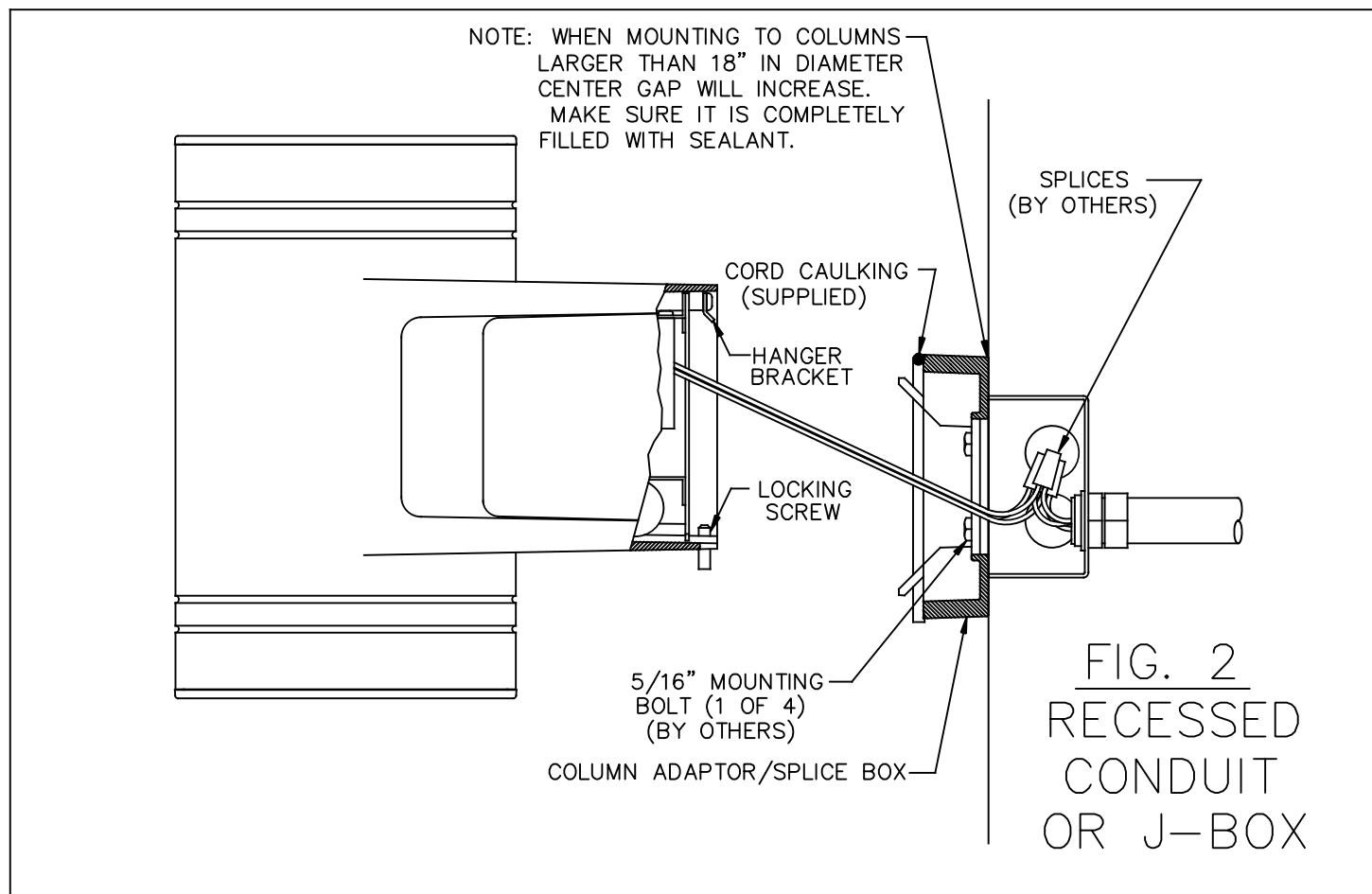
# INSTALLATION INSTRUCTIONS

## COLUMN ADAPTOR FOR 301 LINE CYLINDERS

IMPORTANT: READ ALL INSTRUCTIONS BEFORE PERFORMING ANY WORK.

BE SURE ALL POWER IS OFF PRIOR TO INSTALLING LUMINAIRE.

WARNING: LUMINAIRE MUST BE GROUNDED IN ACCORDANCE WITH APPROPRIATE CODES. FAILURE TO DO SO MAY RESULT IN SERIOUS INJURY.



TO REST AGAINST ADAPTOR. REPLACE LOCKING SCREWS INSTALLED IN LUMINAIRE WITH LOCKING SCREWS SUPPLIED WITH ADAPTOR AND TIGHTEN. REMOVE EXCESS CAULKING.

7. IN LENSED UNITS, REMOVE LENS ASSEMBLY IF LAMP INSTALLATION IS REQUIRED. INSTALL LAMP AND REPLACE LENS ASSEMBLY. (TYPICAL LENS ASSEMBLIES ARE SHOWN IN FIG. 1 FOR REFERENCE ONLY)

NOTE: IN SPIKE DOWN (SD) FIXTURES TOP RELAMPING IS REQUIRED. IN SPIKE BOTH (SB) FIXTURES, THE LOWER LENS ASSEMBLY AND THE LOWER REFLECTOR ASSEMBLY MUST BE REMOVED FOR RELAMPING. THE REFLECTOR ASSEMBLY MAY BE REMOVED BY LOOSENING THE THREE SCREWS THAT SECURE IT TO THE HOUSING AND ROTATING THE ASSEMBLY TO DISENGAGE IT FROM THE SCREWS.



© 2016 Philips Lighting Holding B.V. All Rights Reserved.  
[www.philips.com/luminaires](http://www.philips.com/luminaires)

443561010760/A817171 REV. B

Philips Lighting North America  
Corporation  
200 Franklin Square Drive,  
Somerset, NJ 08873, USA

Philips Lighting Canada Ltd.  
281 Hillmount Road,  
Markham ON, Canada L6C 2S3