



Designed to make your lighting distinct

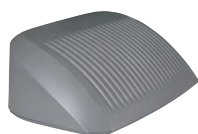
Gardco LED wall sconce 121 offers distinction through its styling, powerful optical design, array of distributions, and impressive selection of control possibilities

Benefits

- Multiple lumen packages with output ranging from 2,607 to 10,103 lumens.
- Energy saving LEDs provide up to 114 LPW efficacy.
- Type 2, 3, and 4 distributions available. Advanced Class 1 LED arrays designed to efficiently direct light into very wide or forward projecting light patterns.
- Emergency battery back up available to provide path-of-egress illumination and is integral to the luminaire - no back box required.
- Energy saving control options, such as motion response and wireless controls available.
- Reliable light engines are IP66 sealed to protect against dust and moisture so that LED life is extended.
- Rugged, die-cast aluminum housing for maximum durability.
- Embossed fins create a unique aesthetic accent.
- Finish available in black, white, bronze, dark gray, or medium gray.

121 LED Wall Sconce

Designed to add an element of styling to your application by pairing straight lines with rounded edges, the form of the 121 is timeless, yet contemporary, and will complement a wide assortment of architectural styles and designs, while delivering high light levels and functional distributions.



Ordering guide

example: 121-32L-700-NW-G4-3-120-BL-IMRI2-BZ

Prefix		Number of LEDs		Drive Current		LED Color-Generation		Distribution		Emergency		Voltage	
121													
121	LED wall sconce	16L	16 LEDs (1 module)	200	200 mA	CW-G4	Cool White 5000K, 70 CRI Generation 4	2	Type 2	EBPC	Emergency Battery Pack Cold Weather Leave blank to omit an emergency option	UNV	120-277V
				400	400 mA							HVU	347-480V
				530	530 mA							120	120V
				700	700 mA							208	208V
				1000	1000 mA							240	240V
				1200	1200 mA							277	277V
		32L	32 LEDs (2 modules)	530	530 mA	WY-G4	Warm Yellow 2700K, 80 CRI Generation 4	3	Type 3			347	347V
				700	700 mA							480	480V
				1000	1000 mA								
Options													
Dimming controls				Motion sensing lens		Photo sensing				Electrical		Finish	
DD 0-10V External dimming (controls by others)				IMRI2 Integral with #2 lens		PCB Photocontrol Button				Fusing		Textured	
DCC Dual Circuit Control				IMRI3 Integral with #3 lens						F1 Single (120, 277, 347VAC)		BK Black	
FAWS Field Adjustable Wattage										F2 Double (208, 240, 480VAC)		WH White	
LLC Integral wireless module										F3 Canadian Double Pull (208, 240, 480VAC)		BZ Bronze	
BL Bi-level functionary with motion sensor										Surge Protection (10kA standard)		DGY Dark Gray	
DynaDimmer: Automatic Profile Dimming										SP2 Increased 20kA		MGY Medium Gray	
CS50 Security 50% Dimming, 7 hours												Customer specified	
CM50 Median 50% Dimming, 8 hours												RAL Specify optional color or RAL (ex: OC-LGP or OC-RAL7024)	
CS30 Security 30% Dimming, 7 hours												CC Custom color (Must supply color chip for required factory quote)	
CM30 Median 30% Dimming, 8 hours													

Luminaire Accessories (order separately)*

Mounting Accessories



Wall Mount

WS Wall Mounted Box for Surface Conduit

Controls Accessories



Wireless controls remote mount module

LLCR2-(F) #2 lens (specify F with finish)
LLCR3-(F) #3 lens (specify F with finish)

Wireless controls remote controller accessory

Wireless controls system offers a remote radio/sensor module that allows connectivity to Wireless system gateway. Remote module can be mounted to wall or pole with j-box supplied. May be specified by choosing one of two different lenses to accommodate a variety of mounting heights/sensor detection ranges. Must specify option DD on luminaires that are planned to be used with remote mount controllers. See spec sheet for WirelessControls details.

* Prior to ordering, consult specification sheets on gardcolighting.com for the most current information, notes, and exclusions.

© 2021 Signify Holding. All rights reserved. The information provided herein is subject to change, without notice. Signify does not give any representation or warranty as to the accuracy or completeness of the information included herein and shall not be liable for any action in reliance thereon. The information presented in this document is not intended as any commercial offer and does not form part of any quotation or contract, unless otherwise agreed by Signify.

Signify North America Corporation
400 Crossing Blvd, Suite 600
Bridgewater, NJ 08807
Telephone 855-486-2216

Signify Canada Ltd.
281 Hillmount Road,
Markham, ON, Canada L6C 2S3
Telephone 800-668-9008

All trademarks are owned by Signify Holding or their respective owners.