

# PHILIPS Day-Brite CFI

Recessed

T-Grid LED  
Troffer 1x4

2200, 3200, 4200 or  
5000 lumens



Project: \_\_\_\_\_

Location: \_\_\_\_\_

Cat.No: \_\_\_\_\_

Type: \_\_\_\_\_

Lamps: \_\_\_\_\_ Qty: \_\_\_\_\_

Notes: \_\_\_\_\_

The Philips Day-Brite / Philips CFI T-Grid LED Troffer is an energy efficient low profile luminaire offering excellent performance for general lighting applications such as offices, schools, healthcare, or retail. Featuring a frosted prismatic lens to enhance visual comfort, the T-Grid LED Troffer utilizes highly reliable and efficient Philips LED platform boards and dimmable driver, enabling market leading efficiency in its category.

## Ordering guide

Example: 1TG32L840-4-FS-02F-UNV-DIM

Width	Family	Ceiling Type	Lumen Package	Color	Length	Door Frame	Lens	Voltage	Driver	Options
1	T	G		—	4	—	02F	—	—	
1' 1'	T T-Grid LED Troffer	G Grid	22L 2200 nominal delivered lumens 32L 3200 nominal delivered lumens 42L 4200 nominal delivered lumens 50L 5200 nominal delivered lumens	830 80 CRI, 3000K 835 80 CRI, 3500K 840 80 CRI, 4000K 850 80 CRI, 5000K	4' 4'	FS Flat Steel RA Regressed Aluminum	02F Pattern 12, .100" nominal diffuse 50%	UNV Universal Voltage 120-277V 347 347V	DIM 0-10V dimming (control leads factory installed and extended to access plate) SDIM Step dimming to 40% input power	F1 3/8" flex, 3 wire, 18 gauge F2 3/8" flex, 4 wire, 18 gauge F1D Two 3/8" flex, 3 Wire, 18 gauge, for separated 0-10V dimming control leads F2/5W 3/8" flex, 5 wire, 18 gauge, for integrated 0-10V dimming control leads EMLED' Integral emergency battery pack 1W 1-way gasket between lens & door frame 2W 1-way & gasket between door frame & housing 3W 2-way & gasket between housing & ceiling (field installed)

## Footnotes

1 1100 nominal lumens delivered in DC mode

## Accessories (order separately)

- FMA14 – 1'x4' "F" mounting frame for NEMA "F" mounting
- GCP – Grid clip pack (1'x4')



# 1TG T-Grid LED Troffer 1x4

2200, 3200, 4200 or 5000 lumens

## Application

- High efficacy long life solid state lighting platform.
- General lighting distribution is excellent for ambient lighting.
- High CRI source provides excellent color rendering.
- LEDs are an excellent source for use with controls since frequent switching does not affect the life of a light source.

## Construction/finish

- Quality recessed troffer for the following "NEMA" ceiling types: NEMA "G"-Grid, NEMA "NFSG"-Narrow Faced Slot Grid, NEMA "GR"-Grid Regressed, NEMA "NFG"-Narrow Faced Grid.
- Field assembled and installed "F" mounting Frame adapts fixture for use in NEMA "F" ceilings requiring flanges.
- Housing is constructed of pre-painted steel.
- Troffer body die-formed CR steel with reinforcing ribs for rigidity.
- 7/8 K.O.'s provided in each end cap and quick wire access plate in housing top with two 7/8 K.O.'s provided.
- Snap on wireway cover.

- T-bar clips are not integral to the luminaire, and must be ordered separately.
- Low profile body minimizes clearance required.
- All units have wire hanger tabs for independent wire suspension.

## Electrical

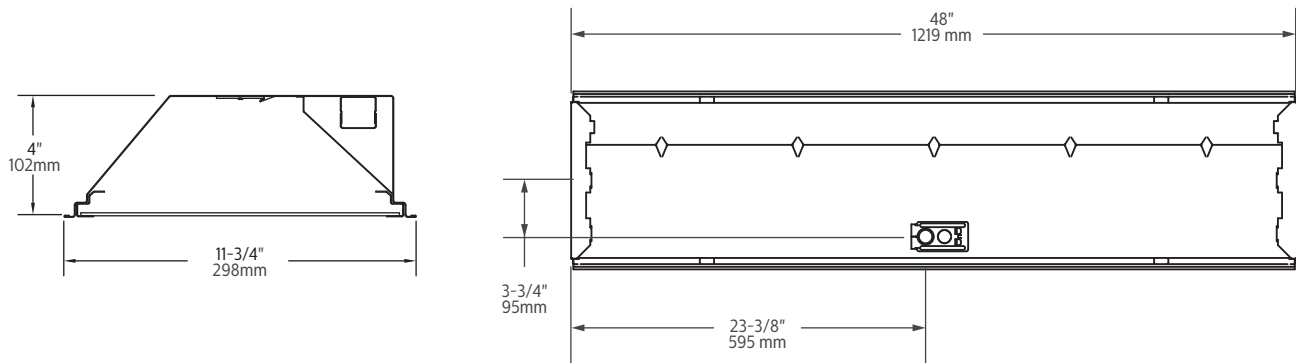
- Standard 0-10V dimming.
- Driver and LED boards are accessible from below. LED boards are individually replaceable if required.
- Five-year luminaire limited warranty including LED boards and driver. Visit [www.philips.com/warranties](http://www.philips.com/warranties) for complete warranty information.
- High efficiency LEDs have 50,000 hour rated life (defined by testing at 70% lumen maintenance (L70)), based on 25°C ambient operating temperature.
- UL listed, suitable for damp locations.
- No exposed internal wiring.
- cETLus listed to UL and CSA standards, suitable for damp location.

- T-Grid LED luminaires are DesignLights Consortium® qualified. Please see the DLC QPL list for exact catalog numbers (<http://www.designlights.org/QPL>).
- Many luminaire components, such as reflectors, refractors, lenses, sockets, lampholders, and LEDs are made from various types of plastics which can be adversely affected by airborne contaminants. If sulfur based chemicals, petroleum based products, cleaning solutions, or other contaminants are expected in the intended area of use, consult factory for compatibility.

## Enclosure

- Flat steel door frame has mitered corners.
- Hinged and latched (from either side) door frame.
- Mechanically designed interlocks eliminate light leaks.
- White (standard) or black (optional) door frames available.
- Diffuser is clear color stabilized 100% prismatic acrylic.

## Dimensions



# 1TG T-Grid LED Troffer 1x4

2200, 3200, 4200 or 5000 lumens

## Photometry

### 1x4 T-Grid LED Troffer, 2200 nominal delivered lumens

### LER – 106

Catalog No.	1TG22L840-4-FS-02F-UNV	Candlepower				Light Distribution			Average Luminance			
		Angle	End	45	Cross	Degrees	Lumens	% Luminaire	Angle	End	45°	Cross
Test No.	33591	0	1055	1055	1055	0-30	789	34.5	45	2672	2448	2252
S/MH	1.1	5	1045	1049	1051	0-40	1235	54.1	55	2197	1911	1733
Lamp Type	LED	15	998	1000	996	0-60	1924	84.3	65	1794	1503	1424
Lumens	2284	25	897	886	873	0-90	2283	100.0	75	1709	1385	1356
Input Watts	21.6	35	744	715	685				85	1981	1425	1397
		45	558	511	470							
		55	372	324	294							
		65	224	188	178							
		75	131	106	104							
		85	51	37	36							

Comparative yearly lighting energy cost per 1000 lumens – **\$2.26** based on 3000 hrs. and \$.08 pwr KWH.

The photometric results were obtained in the Philips Day-Brite laboratory which is NVLAP accredited by the National Institute of Standards and Technology.

Photometric values based on test performed in compliance with LM-79.

### 1x4 T-Grid LED Troffer, 3200 nominal delivered lumens

### LER – 104

Catalog No.	1TG32L840-4-FS-02F-UNV	Candlepower				Light Distribution			Average Luminance			
		Angle	End	45	Cross	Degrees	Lumens	% Luminaire	Angle	End	45°	Cross
Test No.	33592	0	1460	1460	1460	0-30	1092	34.5	45	3698	3398	3118
S/MH	1.1	5	1447	1452	1455	0-40	1709	54.1	55	3040	2650	2399
Lamp Type	LED	15	1380	1384	1378	0-60	2664	84.2	65	2483	2090	1970
Lumens	3163	25	1240	1228	1208	0-90	3161	100.0	75	2371	1925	1877
Input Watts	30.4	35	1029	992	948				85	2730	1990	1909
		45	772	710	651							
		55	515	449	406							
		65	310	261	246							
		75	181	147	143							
		85	70	51	49							

Comparative yearly lighting energy cost per 1000 lumens – **\$2.31** based on 3000 hrs. and \$.08 pwr KWH.

The photometric results were obtained in the Philips Day-Brite laboratory which is NVLAP accredited by the National Institute of Standards and Technology.

Photometric values based on test performed in compliance with LM-79.

# 1TG T-Grid LED Troffer 1x4

2200, 3200, 4200 or 5000 lumens

## Photometry

### 1x4 T-Grid LED Troffer, 4200 nominal delivered lumens

LER – 101

Catalog No.	1TG42L840-4-FS-02F-UNV	Candlepower				Light Distribution			Average Luminance			
		Angle	End	45	Cross	Degrees	Lumens	% Luminaire	Angle	End	45°	Cross
Test No.	33599	0	2030	2030	2030	0-30	1518	34.5	45	5151	4719	4352
S/MH	1.1	5	2011	2020	2023	0-40	2378	54.0	55	4233	3691	3348
Lamp Type	LED	15	1919	1926	1918	0-60	3708	84.2	65	3465	2904	2754
Lumens	4404	25	1727	1709	1682	0-90	4404	100.0	75	3304	2676	2624
Input Watts	43.6	35	1432	1379	1321				85	3806	2750	2680
		45	1076	985	909							
		55	717	625	567							
		65	432	362	344							
		75	253	205	201							
		85	98	71	69							

Comparative yearly lighting energy cost per 1000 lumens – **\$2.38** based on 3000 hrs. and \$.08 pwr KWH.

The photometric results were obtained in the Philips Day-Brite laboratory which is NVLAP accredited by the National Institute of Standards and Technology.

Photometric values based on test performed in compliance with LM-79.

### 1x4 T-Grid LED Troffer, 5000 nominal delivered lumens

LER – 98

Catalog No.	1TG50L840-4-FS-02F-UNV	Candlepower				Light Distribution			Average Luminance			
		Angle	End	45	Cross	Degrees	Lumens	% Luminaire	Angle	End	45°	Cross
Test No.	33596	0	2337	2337	2337	0-30	1749	34.4	45	5929	5457	5009
S/MH	1.1	5	2315	2325	2329	0-40	2740	54.0	55	4880	4265	3853
Lamp Type	LED	15	2209	2217	2208	0-60	4275	84.2	65	3992	3368	3171
Lumens	5078	25	1986	1968	1935	0-90	5075	100.0	75	3813	3099	3021
Input Watts	51.9	35	1650	1590	1522				85	4403	3210	3089
		45	1238	1140	1046							
		55	827	723	653							
		65	498	420	396							
		75	291	237	231							
		85	113	83	80							

Comparative yearly lighting energy cost per 1000 lumens – **\$2.45** based on 3000 hrs. and \$.08 pwr KWH.

The photometric results were obtained in the Philips Day-Brite laboratory which is NVLAP accredited by the National Institute of Standards and Technology.

Photometric values based on test performed in compliance with LM-79.

© 2015 Koninklijke Philips N.V. All rights reserved.  
Philips reserves the right to make changes in specifications and/or to discontinue any product at any time without notice or obligation and will not be liable for any consequences resulting from the use of this publication.  
philips.com/luminaires



Philips Lighting, North America Corporation  
200 Franklin Square Drive, Somerset, NJ 08873  
Tel. 855-486-2216

Imported by: Philips Lighting,  
A division of Philips Electronics Ltd.  
281 Hillmount Rd, Markham, ON, Canada L6C 2S3  
Tel. 800-668-9008