



# INSTALLATION

## WARNINGS AND INSTRUCTIONS FOR LUMINAIRES

**IMPORTANT:** FOR YOUR PROTECTION, YOU MUST CAREFULLY READ ALL WARNINGS AND INSTRUCTIONS IN THEIR ENTIRETY PRIOR TO INSTALLATION, OPERATION, SERVICE OR MAINTENANCE. FAILURE TO DO SO CAN RESULT IN DEATH, PERSONAL INJURY AND PROPERTY DAMAGE. If you do not understand these warnings and instructions, or if additional information is desired, please contact the Customer Care Call Center at 800-555-0050.

- Installation, service and maintenance of luminaires must be performed by a qualified professional and in accordance with all federal, state and local laws, regulations and electrical codes. This professional should be familiar with the construction and operation of this product and any hazards involved. If not qualified, do not attempt installation, service or maintenance.
- To reduce the risk of death, personal injury or property damage from fire, electric shock, falling parts, cuts, abrasions and other hazards, please read all warnings and instructions included with the luminaire, on the luminaire's packaging and affixed to the luminaire itself.
- Maintenance of the luminaires should be performed by person(s) familiar with the luminaire's construction and operation and any hazards involved.



### WARNING

#### RISK OF FIRE, ELECTRIC SHOCK OR PERSONAL INJURY

- Disconnect or turn off power before attempting any installation, service or maintenance.
- Verify that supply voltage is correct by referencing the luminaire label information.
- Make all electrical and ground connections in accordance with the National Electrical Code (NEC) and any other applicable laws, regulations or codes.
- All wiring connections should be capped with UL-approved wire connectors.



### WARNING

#### RISK OF PERSONAL INJURY

- Wear gloves and safety glasses at all times when removing luminaire from carton, installing, servicing or performing maintenance.
- Avoid direct eye exposure to the light source while it is on.



### WARNING

#### RISK OF FIRE OR PERSONAL INJURY

- Keep combustible materials away from LED/lamp & lens.
- Do not operate in close proximity to persons, combustible materials or substances affected by heat or drying.



### WARNING

#### RISK OF FIRE, ELECTRIC SHOCK OR PERSONAL INJURY

- Allow LED/lamp & lens to cool before handling.
- Do not touch enclosure or light source.
- Do not exceed maximum wattage marked on luminaire label.
- Follow all manufacturer's warnings, recommendations, instructions and restrictions for driver type, burning position, mounting locations and replacement.



### CAUTION

#### RISK OF PRODUCT DAMAGE

- Never connect luminaires and/or components under load with supply voltage turned on.
  - Do not mount or support these luminaires in a manner that can cut the outer jacket or damage wire insulation.
  - Do not restrict fixture ventilation. Allow for some volume of airspace around luminaire. Avoid covering luminaire with insulation, foam or other material that will prevent convection or conduction cooling.
  - Do not exceed luminaire maximum ambient temperature.
  - Do not modify the luminaire.
  - Only use luminaire in its intended application and location.
  - LED products are polarity sensitive. Ensure proper polarity before installation.
  - Electrostatic Discharge (ESD) can damage LED. Personal grounding equipment must be worn during all installation and servicing of the luminaire.
  - Do not touch individual electrical components as this can cause ESD, shorten LED life, or impact LED performance.
- Some components inside the luminaire may not be serviceable. In the unlikely event your luminaire may require service, stop using it immediately and contact the Customer Care Call Center at 800-555-0050.
- Always read the luminaire's complete installation instructions prior to installation for any additional luminaire specific warnings.
  - In the case of HID or Fluorescent luminaires, regular re-lamping is required to keep luminaire operating within safe limits
  - **Do not install damaged product.** Handling and installing damaged products can potentially increase the risks mentioned. In case of damage and/or missing parts upon arrival of the luminaire, please contact the Customer Care Call Center at 800-555-0050.
  - These instructions do not purport to cover all details or variations in equipment nor to provide every possible contingency to meet in connection with installation, operation or maintenance. Should further information be desired or should particular problems arise which are not covered sufficiently for the purchaser's or owner's purposes, this matter should be referred to the Customer Care Call Center at 800-555-0050.
  - Please see luminaire specific Installation and Maintenance Instruction for additional warnings or any applicable FCC or regulatory statements. Failure to follow any of these instructions could void luminaire warranties.

#### Luminaire Maintenance

- Regular luminaire maintenance programs are recommended.
- It is recommended to clean the outside of the luminaire and the refractor/lens.
- Frequency of cleaning will depend on ambient dirt level and minimum light output which is acceptable to user.
- If clean water is not sufficient for cleaning, use a neutral, synthetic, non-scratching and non-abrasive cleaning substance.
- Never use alkaline and/or acetous cleaning substances.
- Make sure that the cleaning substance is carefully removed by rinsing with lots of clean water.
- Signify recommends using a cleaning solution that has a PH between 5 and 8.
- Recycle: For information on how to recycle electronic products and components, please visit [www.epa.gov](http://www.epa.gov).

This device complies with part 15 of the FCC Rules. Operation is subject to the following two conditions: (1) This device may not cause harmful interference, and (2) this device must accept any interference received, including interference that may cause undesired operation.

CAN ICES-005 (A) / NMB-005 (A)

442294653951-REVC

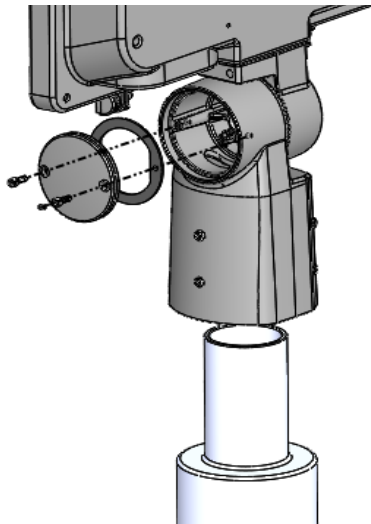
#### Electrical Connection:

- Connect the black fixture lead to the input voltage supply or Hot 1 (208V/240V/480V wiring).
- Connect the white fixture lead to the neutral supply or Hot 2 (208V/240V/480V wiring).
- Connect the Green ground lead to the incoming ground wire.
- If DIMD or WLDC external controls options are selected, connect the purple dimming positive lead to the control's dimming positive lead and the grey dimming negative lead to the control's dimming negative lead.
- **IMPORTANT:** Close fixture access door and tighten the door screws to 27 in-lbs torque or properly close 2x latches if latch option was selected.

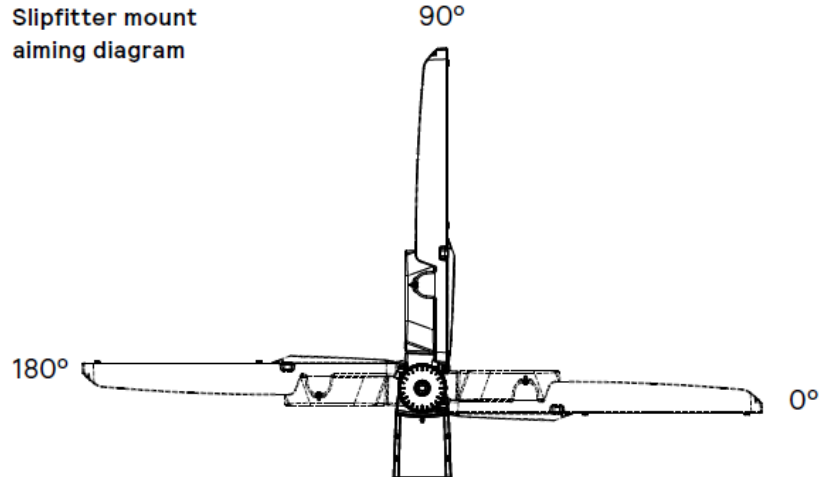


#### SLF—Slip Fitter Mount

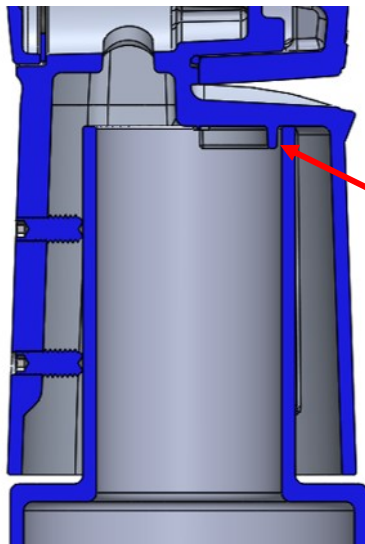
Note: Tenon must be 3.75" or longer.



Slipfitter mount  
aiming diagram



Note: 7 pin NEMA Twist Lock Receptacle option aiming restricted to 0-90° per ANSI C136.10



Centering rib for  
2-3/8" tenons

#### STEP 1:

Remove splice cover screws and splice cover to access wire splice area.

#### STEP 2:

Route the supply wire through the tenon. Secure the supply wire to keep from sliding back down the pole. Route wire through slip fitter arm into splice area.

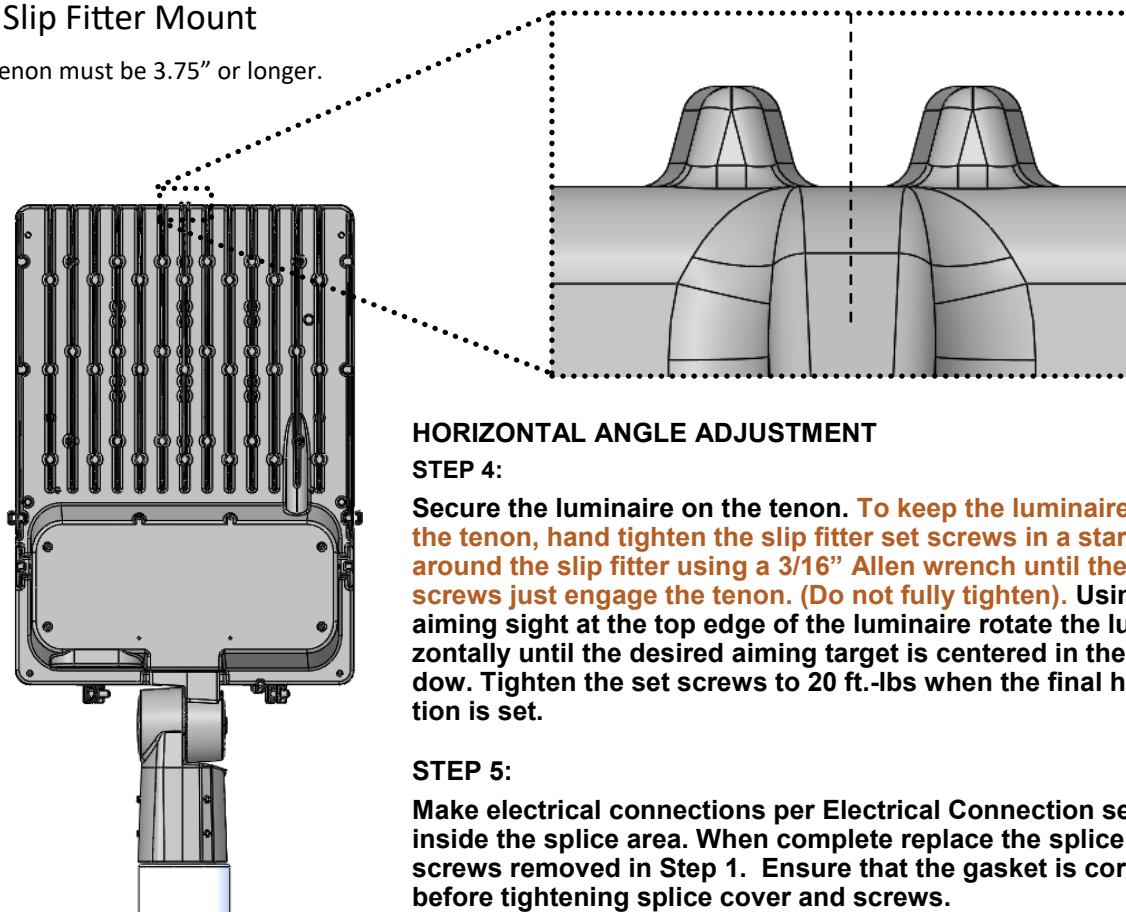
#### STEP 3:

Holding routed wires in the splice area, carefully lower luminaire onto tenon. **The slip fitter should be centered on the tenon. For 2-3/8" tenons a centering rib is cast into the slip fitter base to help guide the centering.** Check to ensure that wires are not pinched between the inside of the slip fitter and top of tenon and that luminaire and wires rotate freely.

# DuraForm Installation Instructions

## SLF—Slip Fitter Mount

Note: Tenon must be 3.75" or longer.



### HORIZONTAL ANGLE ADJUSTMENT

#### STEP 4:

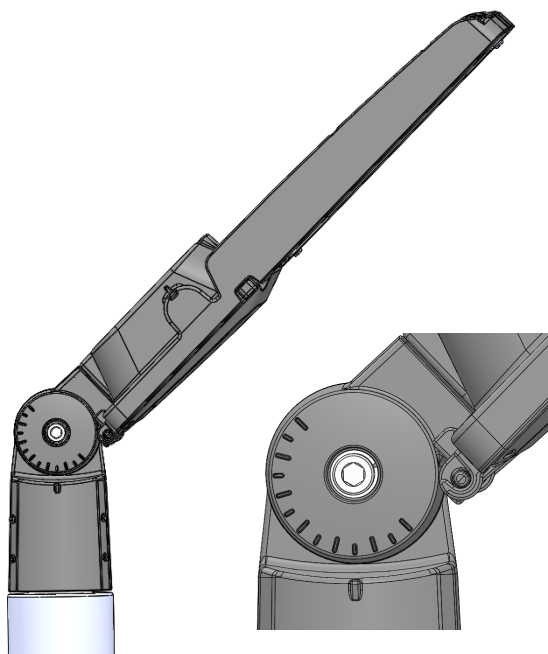
Secure the luminaire on the tenon. **To keep the luminaire centered on the tenon, hand tighten the slip fitter set screws in a star pattern around the slip fitter using a 3/16" Allen wrench until the tip of the screws just engage the tenon. (Do not fully tighten).** Using the built in aiming sight at the top edge of the luminaire rotate the luminaire horizontally until the desired aiming target is centered in the aiming window. Tighten the set screws to 20 ft.-lbs when the final horizontal position is set.

#### STEP 5:

Make electrical connections per Electrical Connection section (pg. 1) inside the splice area. When complete replace the splice cover and screws removed in Step 1. Ensure that the gasket is correctly in place before tightening splice cover and screws.

## SLF—Slip Fitter Mount

Note: Tenon must be 3.75" or longer.



### VERTICAL ANGLE ADJUSTMENT

**NOTE:** Angle adjustment can be made before luminaire installation.

#### STEP 6:

After the luminaire is installed, the vertical angle of the luminaire can be adjusted within the limits of the aiming diagram (pg.1) in 5° increments.

#### STEP 7:

To adjust the vertical angle, loosen the 1/2-13 X 1.75" socket cap bolt located in slip fitter Arm. (Do NOT remove bolt.) Loosen only enough to allow rotation of cast teeth.

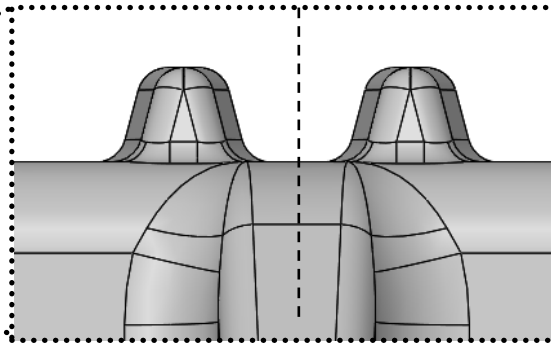
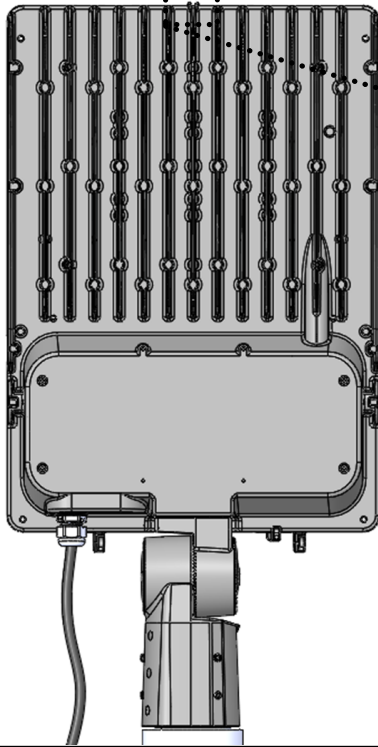
#### STEP 8:

Using the aiming sight and the degree indicators shown as a guide, rotate vertically the luminaire to the desired position and retighten the bolt loosened in Step 7 to 47 ft.-lbs.

# DuraForm Installation Instructions

## SFC—Slip Fitter Mount with Cord

Note: Tenon must be 3.75" or longer.



### HORIZONTAL ANGLE ADJUSTMENT

#### STEP 1:

The slip fitter should be centered on the tenon—see STEP 3 and cut-away illustration on page 1. To keep the luminaire centered on the tenon, hand tighten the slip fitter set screws in a star pattern around the slip fitter using a 3/16" Allen wrench until the tip of the screws just engage the tenon. (Do not fully tighten). Using the built in aiming sight at the top edge of the luminaire rotate the luminaire horizontally until the desired aiming target is centered in the aiming window. Tighten the set screws to 20 ft.-lbs when the final horizontal position is set.

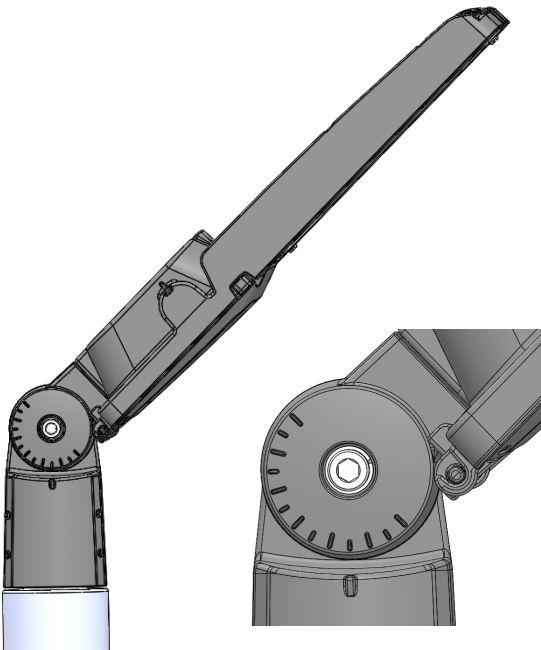
#### STEP 2:

Route the supplied cord to the electrical junction box provided by others. Make electrical connections per the Electrical Connection section (pg. 1) inside junction box. Replace junction box gasket and cover.

NOTE: Electrical connections can be made after installation.

## SFC—Slip Fitter Mount with Cord

Note: Tenon must be 3.75" or longer.



### VERTICAL ANGLE ADJUSTMENT

NOTE: Angle adjustment can be made before luminaire installation.

#### STEP 3:

After the luminaire is installed, the vertical angle of the luminaire can be adjusted within the limits of the aiming diagram (pg. 1) in 5° increments.

#### STEP 4:

To adjust the vertical angle, loosen the 1/2-13 X 1.75" socket cap bolt located in slip fitter Arm. (Do NOT remove bolt.) Loosen only enough to allow rotation of cast teeth.

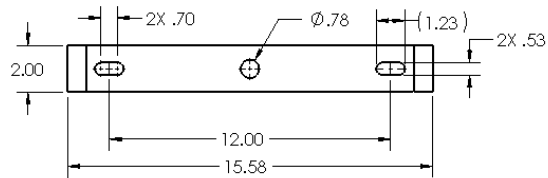
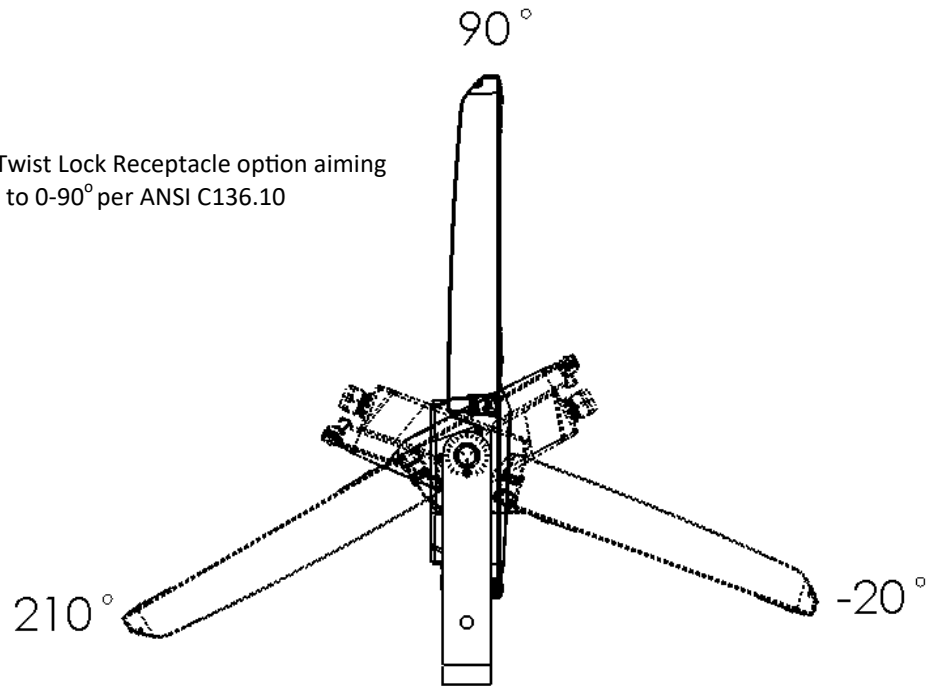
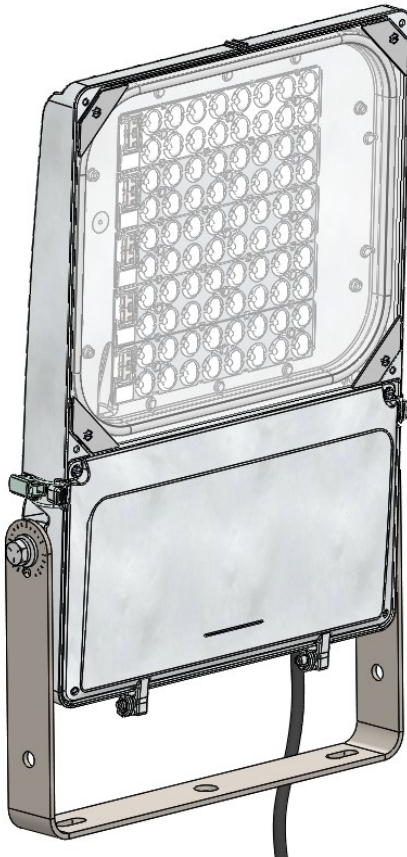
#### STEP 5:

Using the aiming sight and the degree indicators shown as a guide, rotate vertically the luminaire to the desired position and retighten the bolt loosened in Step 4 to 47 ft.-lbs.

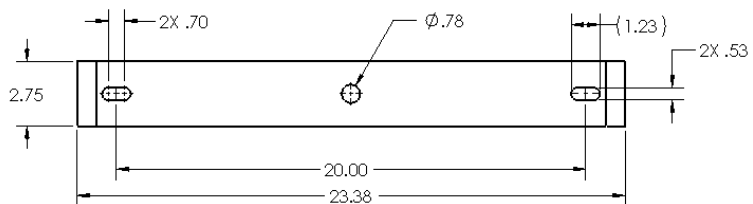
# DuraForm Installation Instructions

## YOK—Yoke Mount

Note: 7 pin NEMA Twist Lock Receptacle option aiming restricted to 0-90° per ANSI C136.10



SMALL & MEDIUM  
YOKE MOUNT DETAIL



LARGE YOKE MOUNT DETAIL

### STEP 1:

Place Yoke bracket in location desired and secure to surface with a minimum of qty. 2 1/2" bolts or studs provided by others. See yoke mount detail above and mount using 12" or 20" spacing depending on luminaire size. Note that 0.78" O.D. (25/32" or 20mm) center hole can also be used for mounting in addition to BUT NOT EXCLUSIVELY WITHOUT other two bolts.

### STEP 2:

Route the supplied cord to the electrical junction box provided by others.

### STEP 3:

Make electrical connections per Electrical Connection section (pg. 1) inside junction box.

STEP 4: Replace junction box gasket and cover.

NOTE: Electrical Connections can be made after installation is finished.



# DuraForm Installation Instructions

## YOK—Yoke Mount

### VERTICAL ANGLE ADJUSTMENT

**NOTE:** Angle adjustment can be made before luminaire installation.

#### STEP 5:

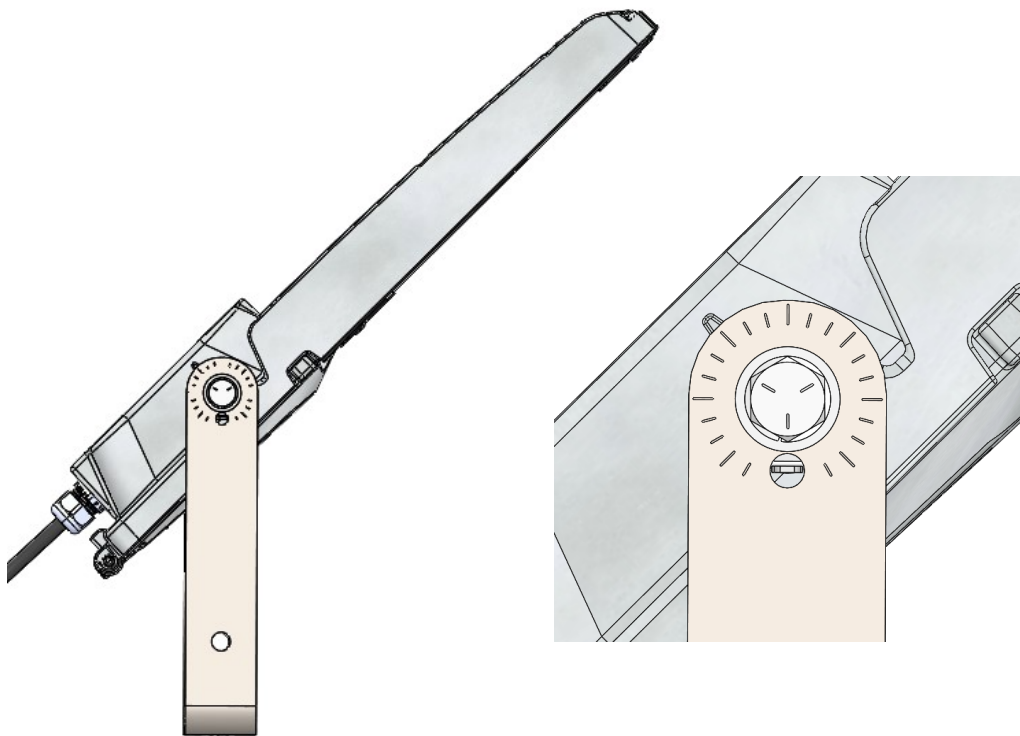
After the luminaire is installed, the vertical angle of the luminaire can be adjusted within the limits of the aiming diagram on pg. 4.

#### STEP 6:

To adjust the vertical angle, loosen both 1/2"–13 X 1.25" hex head bolts attaching Yoke Arm. (Do NOT remove bolts.) Loosen only enough to allow rotation of the luminaire.

#### STEP 7:

Using the built in aiming sight at the top edge of the luminaire and the degree indicators shown as a guide, rotate vertically the luminaire to the desired position and retighten the bolts loosened in Step 6 to 35 ft.-lbs.



This device complies with part 15 of the FCC Rules. Operation is subject to the following two conditions: (1) This device may not cause harmful interference, and (2) this device must accept any interference received, including interference that may cause undesired operation.

CAN ICES-005 (A) / NMB-005 (A)



©2019 Signify Holding. All rights reserved. This document may be subject to change. No representation or warranty as to the accuracy or completeness of the information included herein is given and any liability for any action in reliance thereon is disclaimed. All trademarks are owned by Signify Holding or their respective owners.

Signify North America Corporation  
400 Crossing Blvd, Suite 600  
Bridgewater, NJ 08807, USA  
Phone: 855-486-2216

Signify Canada Ltd.  
281 Hillmount Road,  
Markham, ON, Canada L6C 2S3  
Telephone 800-668-9008