

Project: _____

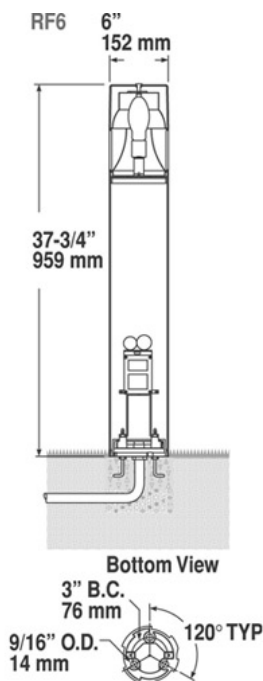
Location: _____

Cat.No: _____

Type: _____

Lamps: _____ Qty: _____

Notes: _____



Ordering Guide

Example: RF6 A K5 100I E

Product Code	RF6	Aluminum Bollard	
Finish	A	Black	
	H	Bronze	
	I	Gray	
Optics	K5	Type V Refractor Bowl	
	KF	Type V Cone	*4
Wattage	100I	100W INC	*1
	26F	26W CFL	*2
	32F	32W CFL	*2
	42F	42W CFL	*2
	50H	50W MH	*2
	70H	70W MH	
	100H	100W MH	
	70S	70W HPS	*2
	100S	100W HPS	*2
Voltage	E	120V	
	F	208V	
	G	240V	
	H	277V	
	K	347V	

*1 Available in 120V (E) only.

*2 Not available in 347V (K).

*3 Available in 120V (E) and 27V (H) only.

*4 Cone Optics (KF) not available with PLT Lamping (26F, 32F, 42F).

Specifications

HOUSING:

1100-0 spun aluminum alloy. Head is secured to the bollard tube with a single stainless steel allen head screw for easy removal for relamping. Easy access to lamp. 6" dia. extruded aluminum with a wall thickness of 0.125". A weatherproof ballast assembly isolates the ballast from water and heat for longer life. All non-ferrous fasteners prevent corrosion and ensure longer life.

FINISH:

Thermoset polyester powdercoat is electrostatically applied after a five-stage conversion cleaning process and bonded by heat fusion thermosetting. Optional CraftStone™ finish is highly weather-resistant and bonded to the aluminum substrate. Laboratory tested for superior weatherability and fade resistance in accordance with ASTM B117 specifications. For larger projects where a custom color is required, contact the factory for more information.

OPTICAL ASSEMBLY:

Type V Refractor Bowl. Heat-resistant, low expansion borosilicate glass refractor bowl. Type V. Specular aluminum internal cone. 6" diameter, 3/16" thick U.V. stabilized, clear acrylic lens.

LAMPING:

MH and HPS Medium base: E17. Incandescent Medium Base A19. 26W CFL (GX24Q-3). 32W CFL (GX24Q-3). 42W CFL (GX24Q-4).

ELECTRICAL ASSEMBLY:

Key-slotted Ballast Assembly is mounted to an aluminum plate, which is mounted inside the base. Quick disconnects for easy installation and removal. 4kv rated porcelain mini-can base. Nickel-plated screw shell with center contact. 26W Fluorescent socket is a GX24Q-3 base. 32W Fluorescent socket is a GX24Q-3 base. 42W Fluorescent socket is a GX24Q-4 base.

BALLAST:

All HID ballasts are core and coil and regulated with power factors better than 90% (HPF). Ballast provides +/- 5% lamp power regulation with +/- 10% input voltage regulation. Ballasts are factory pre-wired and tested. Metal halide ballasts are capable of starting at -20° F or -30° C and HPS at -40°F or -40°C. NOTE: All ballasts are EISA / Title 20 / Title 24 compliant where applicable. Fluorescent ballast is electronic. Ballast is capable of starting at 0° F or -18° C. Ballast is factory wired and tested.

RF6 Bollard

Aluminum

Specifications

INSTALLATION & MOUNTING:

Internal cast aluminum base plate is secured to anchor foundation by three (3) 3/8-16 x 8" galvanized steel bolts and stainless steel nuts in a 3" bolt circle. (Use factory supplied template.). A twist-lock action mates the base plate casting with lower bollard casting, which is welded to the bottom of the bollard extrusion. One set screw is used to secure the bollard to the base plate.

CERTIFICATIONS:

ETL Listed to U.S. safety standards for wet locations. cETL listed to Canadian safety standards for wet locations. Manufactured to ISO 9001:2008 Standards.

WARRANTY:

Three-year limited warranty.

Height :

37 7/8" (96cm)

Width:

6" (15cm)

Bolt Circle:

3" (8 cm)

Anchor Rods:

Internal (3) 3/8" dia. x 8" long (1 cm x 20cm)

Base Diameter:

6" (15cm)

Max. Weight:

Powdercoat: 20 lbs

Max. Weight:

CraftStone: 24 lbs

