



Defining a new standard

Gardco SlenderForm LED area luminaires provide a complete set of LED solutions for every site lighting desire and need. Defined by its high performance, sleek low profile design and rugged construction, The SlenderForm LED square arm mount features a modernized square aesthetic. Utilizing the SlenderForm family, the entire look of the site can be integrated to provide an architecturally diverse yet unified appearance.

Benefits

- Provides precise illumination patterns to suit a wide range of architectural site lighting.
- Highly efficient IP66 optics are protected from the elements and ensure optimal photometric performance.
- Innovative thermal management system to maximize LED performance and life, and to extend component life.
- Tremendous opportunities for additional energy savings through the use of controls.

SFA SlenderForm

Square arm mount



- Elegant design accompanies family aesthetic.
- Style versatility with a choice of two arm variations.
- Multiple lumen packages with output of up to 19,000lm.
- Type 2, 3, 4, and 5 optics available.
- Aluminum heat sink fins built into top of luminaire.
- Carries a 3G vibration rating.

Ordering guide

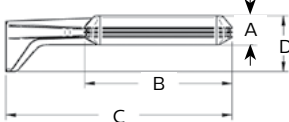
example: SFA-32L-250-NW-G2-AR-2-120-DD-F1-SPA1-BK

Prefix	Number of LEDs	Drive Current	LED Color - Generation	Mounting	Distribution	Voltage
SFA -	<input type="text"/>	<input type="text"/>	<input type="text"/>	AR -	<input type="text"/>	<input type="text"/>
SFA SlenderForm Square Standard Arm Mount luminaire	32L 32 LEDs	250 250mA	NW-G2 Neutral White 4000K, 70CRI Generation 2	AR Arm mount	2 Type 2	120 120V
	48L 48 LEDs	700 700mA	WW-G2 Warm White 3000K, 70CRI Generation 2		2-90 Type 2 rotated left 90°	208 208V
	64L 64 LEDs	850 850mA	CW-G2 Cool White 5700K, 70CRI Generation 2		2-270 Type 2 rotated right 270°	240 240V
					3 Type 3	277 277V
					3-90 Type 3 rotated left 90°	347 347V
					3-270 Type 3 rotated right 270°	480 480V
					4 Type 4	UNV 120-277V (50/60Hz)
					4-90 Type 4 rotated left 90°	HVU 347-480V (50/60Hz)
					4-270 Type 4 rotated right 270°	
					5 Type 5	

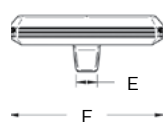


Controls	Electrical	Luminaire	Finish
<input type="text"/>	<input type="text"/>	<input type="text"/>	<input type="text"/>
DynaDimmer: Automatic Profile Dimming CS50 Safety 50% Dimming, 7 hours CM50 Median 50% Dimming, 8 hours CE50 Economy 50% Dimming, 9 hours DA50 All Night 50% Dimming Photoelectric/Receptacle Systems (Twist Lock Receptacle) PCB Photocontrol Button TLRD5 Twist Lock Receptacle 5-Pin TLRD7 Twist Lock Receptacle 7-Pin TLRPC Twist Lock Receptacle with Photocell	DD 0-10V Dimming Driver Infrared Motion Response Systems IMRI3 Integral with #3 lens Pole Mounted Infrared Motion Response Systems with DynaDimmer CS50-IMRO with Safety 50% Dimming CM50-IMRO with Median 50% Dimming CE50-IMRO with Economy 50% Dimming DA50-IMRO with All Night 50% Dimming	Fusing F1 Single (120, 277, 347VAC) F2 Double (208, 240, 480VAC) F3 Canadian Double Pull (208, 240, 480VAC) Pole Mount Fusing FP1 Single (120, 277, 347VAC) FP2 Double (208, 240, 480VAC) FP3 Canadian Double Pull (208, 240, 480VAC) Surge Protection SP1 Standard 10KVA SP2 Increased 20KVA	SPA1 Square Pole Adapter (for use with SFA only) SPA2 Square Pole Adapter (for use with SFV only) HIS Internal House Side Shield DL Diffuse lens Textured BK Black WH White BZ Bronze DGY Dark Gray MGY Medium Gray Customer specified RAL Specify optional color or RAL (ex: OC-RAL7024) CC Custom color (Must supply color chip for required factory quote)

SFA side view



SFA end view



Dimensions (in/cm)

A	3.00" / 7.62cm
B	15.17" / 38.532cm
C	23.30" / 59.182cm
D	5.75" / 14.605cm
E	2.18" / 5.537cm
F	16.10" / 40.894cm

Type	Single EPA	Twin EPA @ 180	3/4 EPA	Single Weight
SFA Single LED Array	0.52ft ² / 0.050m ²	1.04ft ² / 0.097m ²	1.38ft ² / 0.128m ²	26 lbs / 11.794 kgs

Prior to ordering, consult specification sheets on gardcolighting.com for the most current information, notes, and exclusions.

The information presented in this document is not intended as any commercial offer and does not form part of any quotation or contract.

