



# CoreLine Waterproof

## WT120C LED40S/840 IA1 L1200 EL3

Coreline Waterproof - - - 840 neutral white - Power supply unit regulating

Whether for a new building or renovation of an existing space, customers want lighting solutions that provide quality of light and substantial energy and maintenance savings. The new CoreLine Waterproof range of LED products can be used to replace traditional waterproof luminaires with fluorescent lamps. The process of selecting, installing and maintaining is so easy – it's a simple switch.

### Product data

General Information		Remarks	
Lamp family code	-	*-Per Lighting Europe guidance paper "Evaluating performance of LED based luminaires - January 2018": statistically there is no relevant difference in lumen maintenance between B50 and for example B10. Therefore the median useful life (B50) value also represents the B10 value.	
Lamp colour code	840 neutral white		
Light source replaceable	No		
Number of gear units	1 unit		
Driver/power unit/transformer	PSR [ Power supply unit regulating]		
Driver included	Yes		
Optic type	No [-]		
Luminaire light beam spread	110°		
Connection	Push-in connector 4-pole		
Cable	-		
Protection class IEC	Safety class I (I)	Constant light output	No
Glow-wire test	850/30 [ Temperature 850 °C, duration 30 s]	Number of products on MCB	22
Flammability mark	D [ For mounting on easily flammable surfaces]	Product Family Code	WT120C [ Coreline Waterproof]
CE mark	CE mark	Unified glare rating CEN	24
ENEC mark	ENEC mark	<b>Operating and Electrical</b>	
Warranty period	5 years	Input voltage	220 to 240 V
		Input frequency	50 to 60 Hz
		Inrush current	21 A
		Inrush time	0.28 ms

# CoreLine Waterproof

Power factor (min.)	0.9
---------------------	-----

## Controls and Dimming

Dimmable	Yes
----------	-----

## Mechanical and Housing

Housing material	Polycarbonate
Reflector material	Steel
Optic material	-
Optical cover/lens material	Polycarbonate
Fixation material	Stainless steel
Optical cover/lens finish	Textured
Overall length	1250 mm
Overall width	87 mm
Overall height	96 mm
Colour	Grey
Dimensions (height x width x depth)	96 x 87 x 1250 mm (3.8 x 3.4 x 49.2 in)

## Approval and Application

Ingress protection code	IP65 [ Dust penetration-protected, jet-proof]
Mech. impact protection code	IK08 [ 5 J vandal-protected]

## Initial Performance (IEC Compliant)

Initial luminous flux	4100 lm
Luminous flux tolerance	+/-10%
Initial LED luminaire efficacy	104 lm/W
Lamp colour temperature	4000 K
Colour Rendering Index	≥80

Initial chromaticity	(0.38, 0.38) SDCM <3
Initial input power	39.5 W
Power consumption tolerance	+/-10%

## Over Time Performance (IEC Compliant)

Control gear failure rate at median useful life 50,000 h	5 %
Lumen maintenance at median useful life* 50,000 h	L75

## Application Conditions

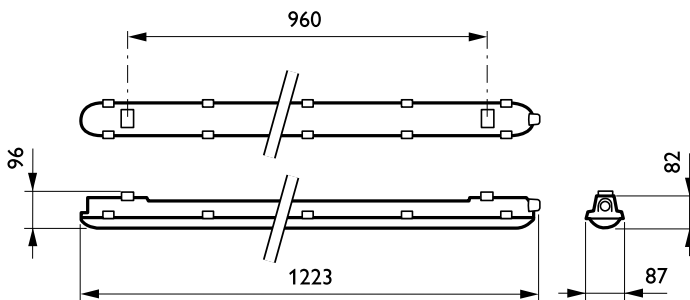
Ambient temperature range	0 to +25 °C
Performance ambient temperature Tq	25 °C
Maximum dimming level	1%
Suitable for random switching	Yes

## Product Data

Full product code	871869939980100
Order product name	WT120C LED40S/840 IA1 L1200 EL3
EAN/UPC – product	8718699399801
Order code	910500465326
Numerator – quantity per pack	1
Numerator – packs per outer box	1
Material no. (12NC)	910500465326
Net weight (piece)	2.530 kg



## Dimensional drawing



CoreLine Waterproof WT120C

