



# LuxSpace, surface mounted

## DN570C LED20S/830 PSD-VLC-E C WH

LUXSPACE 2 COMPACT LOW HEIGHT - LED Module, system flux 2000 lm - 830 warm white - Power supply unit with DALI interface, DC-compatible, external - High-gloss mirror - Push-in connector and pull relief - White RAL 9003

Customers are looking to optimize all their resources, and that means not just their running costs (energy, etc.) but also their human resources. Energy savings are therefore a priority, but they must not have an adverse effect on the well-being of employees, who need a pleasant environment in order to be more productive, or on customers, who want to enjoy their shopping experience. LuxSpace provides the perfect combination of efficiency, light comfort and design, without compromising on lighting performance (color rendering and color uniformity). It offers a wide choice of options for creating the desired ambience, no matter the application.

### Product data

| General Information           |  | Optic type                  | High-gloss mirror                           |
|-------------------------------|--|-----------------------------|---|
| Lamp family code              | LED20S [ LED Module, system flux 2000 lm]                      | Luminaire light beam spread | 80°   |
| Light source color            | 830 warm white   | Control interface           | DALI  |
| Cap-Base                      | - [ -]   | Connection                  | Push-in connector and pull relief           |
| Light source replaceable      | No   | Cable                       | -   |
| Number of gear units          | 1 unit   | Protection class IEC        | Safety class I                              |
| Gear                          | -  | Glow-wire test              | Temperature 850 °C, duration 5 s            |
| Driver/power unit/transformer | Power supply unit with DALI interface, DC-compatible, external | Flammability mark           | For mounting on normally flammable surfaces |
| Driver included               | Yes  | CE mark                     | CE mark                                     |
|                               |  | ENEC mark                   | ENEC mark                                   |

## LuxSpace, surface mounted

|  |   |
|--|---|
| UL mark                                  | -   |
| Warranty period                          | 5 years   |
| Remarks                                  | *-Per Lighting Europe guidance paper "Evaluating performance of LED based luminaires - January 2018": statistically there is no relevant difference in lumen maintenance between B50 and for example B10. Therefore the median useful life (B50) value also represents the B10 value. |
| Constant light output                    | No  |
| Number of products on MCB of 16 A type B | 24  |
| RoHS mark                                | -   |
| Service tag                              | Yes   |
| Product family code                      | DN570C [ LUXSPACE 2 COMPACT LOW HEIGHT]   |
| Unified glare rating CEN                 | 22  |

### Operating and Electrical

|                    |           |
|--------------------|-----------|
| Input Voltage      | 220-240 V |
| Input Frequency    | 50 Hz     |
| Inrush current     | 16 A      |
| Inrush time        | 0.220 ms  |
| Power Factor (Min) | 0.9       |

### Controls and Dimming

|          |     |
|----------|-----|
| Dimmable | Yes |
|----------|-----|

### Mechanical and Housing

|                                     |   |
|-------------------------------------|---|
| Housing Material                    | Aluminum die cast                       |
| Reflector material                  | Polycarbonate aluminum coated           |
| Optic material                      | Polycarbonate                           |
| Optical cover/lens material         | Polycarbonate                           |
| Fixation material                   | Steel                                   |
| Optical cover/lens finish           | Frosted                                 |
| Overall height                      | 217 mm                                  |
| Overall diameter                    | 250 mm                                  |
| Diameter                            | 250 mm                                  |
| Color                               | White RAL 9003                          |
| Dimensions (Height x Width x Depth) | 217 x NaN x NaN mm (8.5 x NaN x NaN in) |

### Approval and Application

|                              |                          |
|------------------------------|--------------------------|
| Ingress protection code      | IP20 [ Finger-protected] |
| Mech. impact protection code | IK02 [ 0.2 J standard]   |

### Initial Performance (IEC Compliant)

|                                     |                      |
|-------------------------------------|----------------------|
| Initial luminous flux (system flux) | 2200 lm              |
| Luminous flux tolerance             | +/-10%               |
| Initial LED luminaire efficacy      | 116 lm/W             |
| Init. Corr. Color Temperature       | 3000 K               |
| Init. Color Rendering Index         | >80                  |
| Initial chromaticity                | (0.43, 0.40) SDCM <3 |
| Initial input power                 | 19 W                 |
| Power consumption tolerance         | +/-10%               |

### Over Time Performance (IEC Compliant)

|   |     |
|---|-----|
| Control gear failure rate at median useful life 50000 h | 5 % |
| Lumen maintenance at median useful life* 50000 h        | L90 |

### Application Conditions

|                                    |               |
|------------------------------------|---------------|
| Ambient temperature range          | +10 to +25 °C |
| Performance ambient temperature Tq | 25 °C         |
| Maximum dim level                  | 1%            |
| Suitable for random switching      | Yes           |

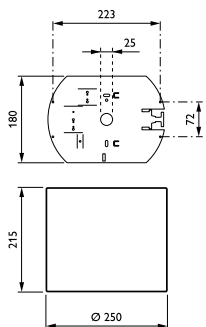
### Product Data

|                                 |                                  |
|---------------------------------|----------------------------------|
| Full product code               | 871829194481200                  |
| Order product name              | DN570C LED20S/830 PSD-VLC-E C WH |
| EAN/UPC - Product               | 8718291944812                    |
| Order code                      | 910503706706                     |
| Numerator - Quantity Per Pack   | 1                                |
| Numerator - Packs per outer box | 1                                |
| Material Nr. (12NC)             | 910503706706                     |
| Net Weight (Piece)              | 1.947 kg                         |



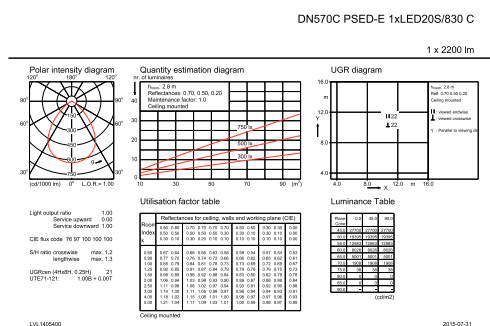
# LuxSpace, surface mounted

## Dimensional drawing

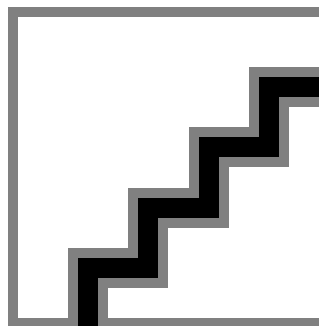


LuxSpace gen2 DN570B-DN572B

## Photometric data



IFGU1\_DN570C PSED-E 1xLED20S830 C.EPS



IFPC\_DN570C PSED-E 1xLED20S/830 C-Polar Indoor (combined)

