



# PerfectBeam gen.2

## SHARP ZOOM DALI 930/WH/25W-IN220-240V

25 W, Power supply unit with DALI interface, Beam angle 7 to 55°, 54°

PerfectBeam gen2 has been dedicatedly designed to deliver excellent quality of light in museum applications. It strikes the perfect balance between presenting and preserving art, between ever-changing exhibitions and the need for low maintenance and energy-efficiency. The often conflicting demands for good visibility and conservation are now satisfied with an LED lighting solution that doesn't emit any harmful UV or IR rays. PerfectBeam gen2 presents masterpieces and objects in their true colours, subtly attracting the viewer's eye, making it easy to see, interpret and appreciate works of art down to the smallest detail. It enables you to use light to evoke emotions and create an unforgettable museum experience. Its modular design, variable beam, beam-shaping accessories and onboard dimming or DALI ensure maximum flexibility to cope with changing exhibitions and lighting needs, now and in the future. PerfectBeam gen2 is the right solution for high-end fashion retail where you need to enhance colours and materials, and underline details.

### Product data

General Information		EU RoHS compliant	
Light source replaceable	No	No	
Number of gear units	Unit		
Driver included	Yes		
Lighting Technology		Light Technical	
CE mark	Yes	Luminous Flux	1,560 lm
Warranty period	2 years	Correlated Colour Temperature	3000 K
Flammability mark	-	Luminous efficacy (rated) (nom.)	62 lm/W
ENEC mark	-	Colour rendering index (CRI)	94
Glow-wire test	-	Beam angle of light source	120 degree(s)
		Light source colour	930 warm white
		Optic type	Beam angle 7 to 55°

## PerfectBeam gen.2

Luminaire light beam spread	54°
Unified Glare Rating (CEN)	Not applicable

### Operating and Electrical

Input Voltage	220/240 V
Line Frequency	50 to 60 Hz
Initial CLO power consumption	18.6 W
Average CLO power consumption	25 W
Inrush current	0.851 A
Inrush time	1 ms
Power Consumption	25 W
Power Factor (Fraction)	0.97
Connection	Connection unit 3-pole
Cable	-
Number of products on MCB of 16 A type B	90

### Temperature

Ambient temperature range	0 to +35 °C
---------------------------	-------------

### Controls and Dimming

Dimmable	Yes
Driver/power unit/transformer	Power supply unit with DALI interface
Control interface	DALI
Constant light output	Yes

### Mechanical and Housing

Housing material	Aluminium
Reflector material	-
Optic material	Glass
Optical cover/lens material	Polymethyl methacrylate
Fixation material	Aluminium
Housing Colour	Aluminium
Optical cover/lens finish	Frosted
Overall length	208 mm
Overall width	180 mm

Overall height	256 mm
Overall diameter	90 mm
Dimensions (height x width x depth)	256 x 180 x 208 mm

### Approval and Application

Ingress protection code	IP20 [Finger-protected]
Mech. impact protection code	-
Protection class IEC	Safety class II

### Initial Performance (IEC Compliant)

Luminous flux tolerance	+/-5%
Initial chromaticity	0.4338, 0.4030 (+/- 0.005); SDCM 2
Power consumption tolerance	+/-5%

### Over Time Performance (IEC Compliant)

Driver failure rate at 5,000 hours	0.01 %
------------------------------------	--------

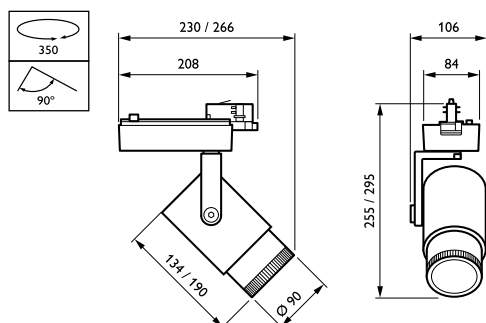
### Application Conditions

Performance ambient temperature Tq	25 °C
Maximum dim level	3%
Suitable for random switching	No

### Product Data

Order product name	SHARP ZOOM DALI 930/WH/25W-IN220-240V
Full product name	SHARP ZOOM DALI 930/WH/25W-IN220-240V
Full EOC	871869919112200
Order code	19112200
Material no. (12 NC)	910504801520
SAP numerator – quantity per pack	1
Numerator – packs per outer box	1

## Dimensional drawing



## PerfectBeam gen.2

