



PerfectBeam gen.2

SHARP FRAME DALI 930/WH/23W-IN220-240V

23 W, Power supply unit (On/Off), Beam angle 30°, 30°

PerfectBeam gen2 has been dedicatedly designed to deliver excellent quality of light in museum applications. It strikes the perfect balance between presenting and preserving art, between ever-changing exhibitions and the need for low maintenance and energy efficiency. The often conflicting demands for good visibility and conservation are now satisfied with an LED lighting solution that doesn't emit any harmful UV or IR rays. PerfectBeam gen.2 presents masterpieces and objects in their true colors, subtly attracting the viewer's eye, making it easy to see, interpret and appreciate works of art down to the smallest detail. It enables you to use light to evoke emotions and create an unforgettable museum experience. Its modular design, variable beam, beam shaping accessories and onboard dimming or DALI ensure maximum flexibility to cope with changing exhibitions and lighting needs, now and in the future. PerfectBeam gen.2 is the right solution also in high-end fashion retail where you need to enhance colors, materials and underline details.

Product data

General Information		Light Technical	
Light source replaceable	No	Luminous Flux	920 lm
Number of gear units	1 unit	Correlated Color Temperature (Nom)	3000 K
Driver included	Yes	Luminous Efficacy (rated) (Nom)	40 lm/W
Lighting Technology	LED	Color rendering index (CRI)	94
CE mark	Yes	Beam angle of light source	120 degree(s)
Warranty period	2 years	Light source color	930 warm white
Flammability mark	-	Optic type	Beam angle 30°
ENEC mark	-	Luminaire light beam spread	30°
Glow-wire test	-	Unified glare rating CEN	Not applicable
EU RoHS compliant	No		

PerfectBeam gen.2

Operating and Electrical

Input Voltage	220/240 V
Line Frequency	50 to 60 Hz
Initial CLO power consumption	16.6 W
Average CLO power consumption	23 W
Inrush current	0.851 A
Inrush time	1 ms
Power Consumption	23 W
Power Factor (Fraction)	0.97
Connection	Connection unit 3-pole
Cable	-
Number of products on MCB of 16 A type B	90

Temperature

Ambient temperature range	0 to +35 °C
---------------------------	-------------

Controls and Dimming

Dimmable	Yes
Driver/power unit/transformer	Power supply unit (On/Off)
Control interface	DALI
Constant light output	Yes

Mechanical and Housing

Housing Material	Aluminum
Reflector material	-
Optic material	Glass
Optical cover material	Polymethyl methacrylate
Fixation material	Aluminum
Housing Color	Aluminum
Optical cover finish	Clear
Overall length	208 mm
Overall width	180 mm
Overall height	292 mm

Overall diameter	90 mm
Dimensions (Height x Width x Depth)	292 x 180 x 208 mm

Approval and Application

Ingress protection code	IP20 [Finger-protected]
Mech. impact protection code	-
Protection class IEC	Safety class II

Initial Performance (IEC Compliant)

Luminous flux tolerance	+/-5%
Initial chromaticity	0.4338, 0.4030 (+/- 0.005); SDCM 2
Power consumption tolerance	+/-5%

Over Time Performance (IEC Compliant)

Driver failure rate at 5000 h	0.01 %
-------------------------------	--------

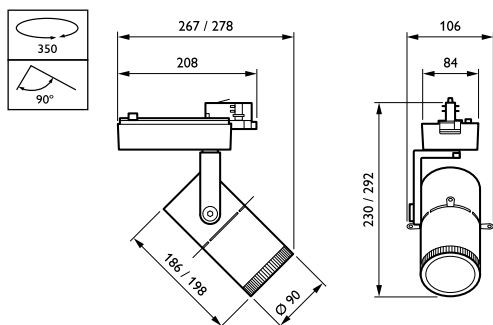
Application Conditions

Performance ambient temperature Tq	25 °C
Maximum dim level	3%
Suitable for random switching	No

Product Data

Order product name	SHARP FRAME DALI 930/WH/23W-IN220-240V
Full product name	SHARP FRAME DALI 930/WH/23W-IN220-240V
Full product code	871869919124500
Order code	910504801532
Material Nr. (12NC)	910504801532
Numerator - Quantity Per Pack	1
Numerator - Packs per outer box	1

Dimensional drawing



PerfectBeam gen.2

