

UniStrip G4

BCP380 24LEDLP 27K 24V A4 L51 DMX

UniStrip G4 is a surface-mounted, exterior-rated LED luminaire that is designed for façade and outdoor architectural lighting applications.;One family that fits all your needs, wall washing, grazing and also linear flood lighting.;The robust mechanical and unique optical designs make it ideal for illuminating buildings facades, bridges, overpasses and any application that requires a linear lighting solution.;Available in white, monochromatic colours, RGB, RGBW and tunable white and DMX control option available with up to 8 pixels (8IDs) to give architects and designers the freedom to explore a wide range of concepts and design with no limitations.

Product data

| General Information | |
|-----------------------------|--------------------------------------------------|
| Lamp colour code | Warm white |
| Light source replaceable | No |
| Driver included | No |
| Optical cover/lens type | CLFT [Clear flat] |
| Luminaire light beam spread | 25° x 40° |
| Control interface | Dynamix DMX |
| Connection | 2 push-in connectors 5-pole |
| Cable | 2 cables 0.15 m with connectors 5-pole |
| Protection class IEC | Safety class III (III) |
| Flammability mark | F [For mounting on normally flammable surfaces] |
| CE mark | CE mark |
| LED engine type | LED |
| Operating and Electrical | |
| Input voltage | 24 DC V |
| Input frequency | - Hz |
| Power factor (min.) | 0.9 |

| Controls and Dimming | |
|------------------------------|-----------------------------------------------|
| Dimmable | Yes |
| Mechanical and Housing | |
| Housing material | Aluminum extruded |
| Optic material | Polycarbonate |
| Optical cover/lens material | Tempered glass |
| Fixation material | Stainless steel |
| Mounting device | MBA [Mounting bracket adjustable] |
| Optical cover/lens finish | Clear |
| Overall length | 510 mm |
| Overall width | 35 mm |
| Overall height | 86 mm |
| Colour | Dark Grey |
| Approval and Application | |
| Ingress protection code | IP66 [Dust penetration-protected, jet-proof] |
| Mech. impact protection code | IK06 [1 J] |

UniStrip G4

Initial Performance (IEC Compliant)

| | |
|--------------------------------|---------|
| Initial luminous flux | 370 lm |
| Luminous flux tolerance | +/-10% |
| Initial LED luminaire efficacy | 66 lm/W |
| Lamp colour temperature | 2700 K |
| Colour Rendering Index | 80 |
| Initial chromaticity | 4 SDCM |
| Initial input power | 5.6 W |
| Power consumption tolerance | +/-10% |

Application Conditions

| | |
|---------------------------|---------------|
| Ambient temperature range | -40 to +50 °C |
|---------------------------|---------------|

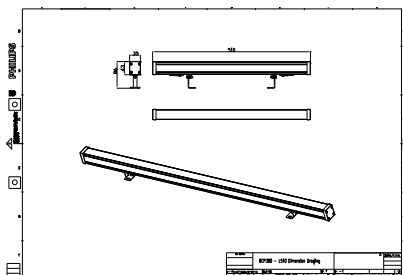
Product Data

| | |
|---------------------------------|-----------------------------------|
| Full product code | 911401738292 |
| Order product name | BCP380 24LEDLP 27K 24V A4 L51 DMX |
| Order code | 911401738292 |
| Numerator – quantity per pack | 1 |
| Numerator – packs per outer box | 30 |
| Material no. (12NC) | 911401738292 |
| Net weight (piece) | 0.399 kg |



Warnings and Safety

Dimensional drawing



BCP280/383/384/385 UNiStrip G3

