

UniStrip G4

BCP380 48LEDLP RGB 24V 40 L100 8PX

UniStrip G4 is a surface-mounted, exterior-rated LED luminaire that is designed for façade and outdoor architectural lighting applications.;One family that fits all your needs, wall washing, grazing and also linear flood lighting.;The robust mechanical and unique optical designs make it ideal for illuminating buildings facades, bridges, overpasses and any application that requires a linear lighting solution.;Available in white, monochromatic colours, RGB, RGBW and tunable white and DMX control option available with up to 8 pixels (8IDs) to give architects and designers the freedom to explore a wide range of concepts and design with no limitations.

Product data

General Information	
Lamp colour code	Red, green and blue (RGB)
Light source replaceable	No
Driver included	No
Optical cover/lens type	CLFT [Clear flat]
Luminaire light beam spread	40° x 40°
Control interface	Dynamix DMX
Connection	2 push-in connectors 5-pole
Cable	2 cables 0.15 m with connectors 5-pole
Protection class IEC	Safety class III (III)
Flammability mark	F [For mounting on normally flammable surfaces]
CE mark	CE mark
LED engine type	LED
Operating and Electrical	
Input voltage	24 DC V
Input frequency	- Hz
Power factor (min.)	0.9

Controls and Dimming	
Dimmable	Yes
Mechanical and Housing	
Housing material	Aluminum extruded
Optic material	Polymethyl methacrylate
Optical cover/lens material	Tempered glass
Fixation material	Stainless steel
Mounting device	MBA [Mounting bracket adjustable]
Optical cover/lens finish	Clear
Overall length	1000 mm
Overall width	35 mm
Overall height	86 mm
Colour	Dark Grey
Approval and Application	
Ingress protection code	IP66 [Dust penetration-protected, jet-proof]
Mech. impact protection code	IK06 [1 J]

UniStrip G4

Initial Performance (IEC Compliant)

Initial luminous flux	216 lm
Luminous flux tolerance	+/-10%
Initial LED luminaire efficacy	19 lm/W
Colour Rendering Index	-
Initial input power	11.5 W
Power consumption tolerance	+/-10%

Application Conditions

Ambient temperature range	-40 to +50 °C
---------------------------	---------------

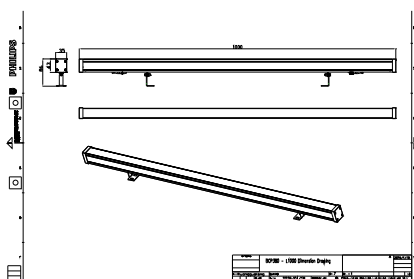
Product Data

Full product code	911401738572
Order product name	BCP380 48LEDLP RGB 24V 40 L100 8PX
Order code	911401738572
Numerator – quantity per pack	1
Numerator – packs per outer box	15
Material no. (12NC)	911401738572
Net weight (piece)	1.199 kg



Warnings and Safety

Dimensional drawing



BCP280/383/384/385 UNiStrip G3

