



# UniFlood C

## BVP322 18LED 30K 220V 30

UniFlood C is a circular-shaped, exterior-rated and cost-effective architectural LED floodlight that is designed for façade, landscape and outdoor flood lighting applications. The robust mechanical design and high-efficiency optical design make it ideal for illuminating multi-storey exterior facades, bridges, landmarks and monuments. Available in white, monochromatic colours, RGB, RGBW and tunable white. Six different spread lenses, ranging from narrow spot to wide flood, and a DMX512/RDM control option available to give architects and designers the freedom to explore a wide range of concepts and design with no limitations.

### Product data

General Information	
Lamp colour code	Warm white
Light source replaceable	No
Number of gear units	1 unit
Driver/power unit/transformer	PSU [ Power supply unit]
Driver included	Yes
Optical cover/lens type	FG [ Flat glass]
Luminaire light beam spread	30°
Control interface	-
Connection	Flying leads/wires
Cable	Cable 0.5 m without plug 3-pole
Protection class IEC	Safety class I (I)
Flammability mark	F [ For mounting on normally flammable surfaces]
CE mark	CE mark
Constant light output	No
Number of products on MCB	6
LED engine type	LED

Operating and Electrical	
Input voltage	220 to 240 V
Input frequency	50 to 60 Hz
Inrush current	40 A
Inrush time	0.45 ms
Power factor (min.)	0.9

Controls and Dimming	
Dimmable	No

Mechanical and Housing	
Housing material	Aluminum die-cast
Optic material	Polymethyl methacrylate
Optical cover/lens material	Tempered glass
Fixation material	Steel
Mounting device	MBA [ Mounting bracket adjustable]
Optical cover/lens shape	Flat
Optical cover/lens finish	Clear
Overall length	258 mm

# UniFlood C

Overall width	210 mm
Overall height	157 mm
Overall diameter	210 mm
Colour	Dark Grey

## Approval and Application

Ingress protection code	IP66 [ Dust penetration-protected, jet-proof]
Mech. impact protection code	IK08 [ 5 J vandal-protected]

## Initial Performance (IEC Compliant)

Initial luminous flux	1910 lm
Luminous flux tolerance	+/-10%
Initial LED luminaire efficacy	53 lm/W
Lamp colour temperature	3000 K
Colour Rendering Index	80
Initial chromaticity	SDCM = 4
Initial input power	36 W

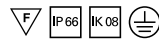
Power consumption tolerance	+/-10%
-----------------------------	--------

## Application Conditions

Ambient temperature range	-40 to +50 °C
---------------------------	---------------

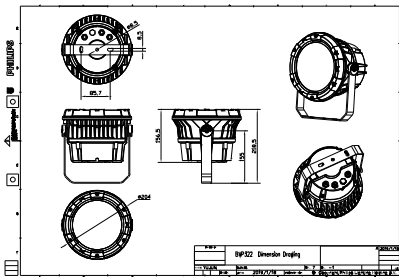
## Product Data

Full product code	911401739922
Order product name	BVP322 18LED 30K 220V 30
Order code	911401739922
Numerator – quantity per pack	1
Numerator – packs per outer box	2
Material no. (12NC)	911401739922
Net weight (piece)	4.099 kg



## Warnings and Safety

### Dimensional drawing



BVP321/322/323/324

