

UniStrip G4

BCP383 12LED 30K 220V 40 L50 DMX

UniStrip G4, 1391 lm, 27 W, Warm white, Medium beam angle 40°, 40° x 40°, Dynamix DMX, Safety class I, Mounting bracket adjustable

UniStrip G4 is a surface mounted, exterior-rated LED luminaire that is designed for façade and outdoor architectural lighting applications. One family that fits all your needs, wall washing, grazing and also linear flood lighting. The robust mechanical and unique optical designs make it ideal for illuminating buildings facades, bridges, overpasses and any application that requires a linear lighting solution. Available in white, monochromatic colors, RGB, RGBW and tunable white and DMX control option available with up to 8 pixels (8IDs) to give architects and designers the freedom to explore a wide range of concepts and design with no limitations.

Warnings and Safety

- For outdoor use only

Product data

General Information	
Light source replaceable	No
Number of gear units	1 unit
Driver included	Yes
Light source engine type	LED
Lighting Technology	LED
CE mark	CE mark
Flammability mark	For mounting on normally flammable surfaces

Light Technical	
Luminous Flux	1,391 lm
Standard tilt angle posttop	-
Standard tilt angle side entry	-
Correlated Color Temperature (Nom)	3000 K
Luminous Efficacy (rated) (Nom)	52 lm/W
Color rendering index (CRI)	80
Light source color	Warm white
Optical cover type	Tempered glass
Luminaire light beam spread	40° x 40°

UniStrip G4

Optic type outdoor	Medium beam angle 40°
Operating and Electrical	
Input Voltage	220 to 240 V
Line Frequency	50 to 60 Hz
Inrush current	60 A
Inrush time	0.45 ms
Power Consumption	27 W
Power Factor (Fraction)	0.9
Connection	Flying leads/wires and 2 Push-in connector 4-pole
Cable	Cable 0.3 m without plug 3-pole + 2 Cables 0.3 m with connector 4-pole
Number of products on MCB of 16 A type B 6	
Temperature	
Ambient temperature range	-40 to +50 °C
Controls and Dimming	
Dimmable	Yes
Driver/power unit/transformer	Power supply unit (On/Off)
Control interface	Dynamix DMX
Mechanical and Housing	
Housing Material	Aluminum extruded
Optic material	Polymethyl methacrylate
Optical cover material	Glass
Fixation material	Aluminum
Housing Color	Dark gray
Mounting device	Mounting bracket adjustable

Optical cover shape	Flat
Optical cover finish	Clear
Overall length	500 mm
Overall width	45 mm
Overall height	105 mm
Dimensions (Height x Width x Depth)	105 x 45 x 500 mm
Approval and Application	
Ingress protection code	IP66 [Dust penetration-protected, jet-proof]
Mech. impact protection code	IK06 [1 J]
Protection class IEC	Safety class I

Initial Performance (IEC Compliant)

Luminous flux tolerance	+/-10%
Initial chromaticity	4 SDCM
Power consumption tolerance	+/-10%

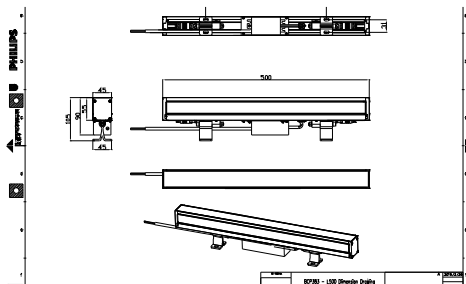
Application Conditions

Maximum dim level	10%
-------------------	-----

Product Data

Order product name	BCP383 12LED 30K 220V 40 L50 DMX
Full product name	BCP383 12LED 30K 220V 40 L50 DMX
Full product code	911401750772
Order code	911401750772
Material Nr. (12NC)	911401750772
Numerator - Quantity Per Pack	1
Numerator - Packs per outer box	6

Dimensional drawing



UniStrip G4

