



# UniStrip G4

## BCP383 12LED RGBNW 220V A4 L50 DMX

UniStrip G4, 844 lm, 27 W, Red, green, blue and white, Asymmetrical, 25° x 40°, Dynamic DMX, Safety class I, Mounting bracket adjustable

UniStrip G4 is a surface mounted, exterior-rated LED luminaire that is designed for façade and outdoor architectural lighting applications. One family that fits all your needs, wall washing, grazing and also linear flood lighting. The robust mechanical and unique optical designs make it ideal for illuminating buildings facades, bridges, overpasses and any application that requires a linear lighting solution. Available in white, monochromatic colors, RGB, RGBW and tunable white and DMX control option available with up to 8 pixels (8IDs) to give architects and designers the freedom to explore a wide range of concepts and design with no limitations.

### Warnings and Safety

- For outdoor use only

### Product data

| General Information      |   | Light Technical                    |                            |
|--------------------------|---|------------------------------------|----------------------------|
| Light source replaceable | No  | Luminous Flux                      | 844 lm                     |
| Number of gear units     | 1 unit                                      | Standard tilt angle posttop        | -                          |
| Driver included          | Yes   | Standard tilt angle side entry     | -                          |
| Light source engine type | LED   | Correlated Color Temperature (Nom) | -                          |
| Lighting Technology      | LED   | Luminous Efficacy (rated) (Nom)    | 31 lm/W                    |
| CE mark                  | CE mark                                     | Color rendering index (CRI)        | -                          |
| Flammability mark        | For mounting on normally flammable surfaces | Light source color                 | Red, green, blue and white |
|                          |   | Optical cover type                 | Clear flat                 |
|                          |   | Luminaire light beam spread        | 25° x 40°                  |

# UniStrip G4

|  |   |
|--|---|
| Optic type outdoor                       | Asymmetrical  |
| <b>Operating and Electrical</b>          |   |
| Input Voltage                            | 220 to 240 V  |
| Line Frequency                           | 50 to 60 Hz   |
| Inrush current                           | 60 A  |
| Inrush time                              | 0.45 ms   |
| Power Consumption                        | 27 W  |
| Power Factor (Fraction)                  | 0.9   |
| Connection                               | Flying leads/wires and 2 Push-in connector<br>4-pole                      |
| Cable                                    | Cable 0.3 m without plug 3-pole + 2 Cables<br>0.3 m with connector 4-pole |
| Number of products on MCB of 16 A type B | 6   |

## Temperature

|                           |               |
|---------------------------|---------------|
| Ambient temperature range | -40 to +50 °C |
|---------------------------|---------------|

## Controls and Dimming

|                               |                            |
|-------------------------------|----------------------------|
| Dimmable                      | Yes                        |
| Driver/power unit/transformer | Power supply unit (On/Off) |
| Control interface             | Dynamic DMX                |

## Mechanical and Housing

|                        |                             |
|------------------------|-----------------------------|
| Housing Material       | Aluminum extruded           |
| Optic material         | Polymethyl methacrylate     |
| Optical cover material | Tempered glass              |
| Fixation material      | Aluminum                    |
| Housing Color          | Dark gray                   |
| Mounting device        | Mounting bracket adjustable |

|                                     |                   |
|-------------------------------------|-------------------|
| Optical cover shape                 | Flat              |
| Optical cover finish                | Clear             |
| Overall length                      | 500 mm            |
| Overall width                       | 45 mm             |
| Overall height                      | 105 mm            |
| Dimensions (Height x Width x Depth) | 105 x 45 x 500 mm |

## Approval and Application

|                              |  |
|------------------------------|--|
| Ingress protection code      | IP66 [Dust penetration-protected, jet-proof] |
| Mech. impact protection code | IK06 [1 J]                                   |
| Protection class IEC         | Safety class I                               |

## Initial Performance (IEC Compliant)

|                             |        |
|-----------------------------|--------|
| Luminous flux tolerance     | +/-10% |
| Power consumption tolerance | +/-10% |

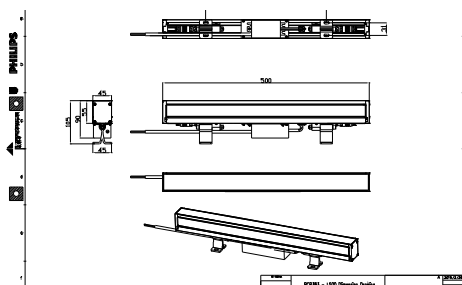
## Application Conditions

|                   |     |
|-------------------|-----|
| Maximum dim level | 10% |
|-------------------|-----|

## Product Data

|                                 |                                    |
|---------------------------------|------------------------------------|
| Order product name              | BCP383 12LED RGBNW 220V A4 L50 DMX |
| Full product name               | BCP383 12LED RGBNW 220V A4 L50 DMX |
| Full product code               | 871951494527299                    |
| Order code                      | 911401750822                       |
| Material Nr. (12NC)             | 911401750822                       |
| Numerator - Quantity Per Pack   | 1                                  |
| EAN/UPC - Product/Case          | 8719514945272                      |
| Numerator - Packs per outer box | 6                                  |
| EAN/UPC - Case                  | 8719514945272                      |

## Dimensional drawing



## UniStrip G4

