

UniStrip G4

BCP383 24LED 30K 220V 40 L100 DMX

UniStrip G4, 2754 lm, 50 W, Warm white, Medium beam angle 40°, 40° x 40°, Dynamix DMX, Safety class I, Mounting bracket adjustable

UniStrip G4 is a surface mounted, exterior-rated LED luminaire that is designed for façade and outdoor architectural lighting applications. One family that fits all your needs, wall washing, grazing and also linear flood lighting. The robust mechanical and unique optical designs make it ideal for illuminating buildings facades, bridges, overpasses and any application that requires a linear lighting solution. Available in white, monochromatic colors, RGB, RGBW and tunable white and DMX control option available with up to 8 pixels (8IDs) to give architects and designers the freedom to explore a wide range of concepts and design with no limitations.

Warnings and Safety

- For outdoor use only

Product data

| General Information | |
|--------------------------|---|
| Light source replaceable | No |
| Number of gear units | 1 unit |
| Driver included | Yes |
| Light source engine type | LED |
| Lighting Technology | LED |
| CE mark | CE mark |
| Flammability mark | For mounting on normally flammable surfaces |

| Light Technical | |
|------------------------------------|----------------|
| Luminous Flux | 2,754 lm |
| Standard tilt angle posttop | - |
| Standard tilt angle side entry | - |
| Correlated Color Temperature (Nom) | 3000 K |
| Luminous Efficacy (rated) (Nom) | 55 lm/W |
| Color rendering index (CRI) | 80 |
| Light source color | Warm white |
| Optical cover type | Tempered glass |
| Luminaire light beam spread | 40° x 40° |

UniStrip G4

| | |
|--|---|
| Optic type outdoor | Medium beam angle 40° |
| Operating and Electrical | |
| Input Voltage | 220 to 240 V |
| Line Frequency | 50 to 60 Hz |
| Inrush current | 60 A |
| Inrush time | 0.45 ms |
| Power Consumption | 50 W |
| Power Factor (Fraction) | 0.9 |
| Connection | Flying leads/wires and 2 Push-in connector 4-pole |
| Cable | Cable 0.3 m without plug 3-pole + 2 Cables 0.3 m with connector 4-pole |
| Number of products on MCB of 16 A type B 4 | |
| Temperature | |
| Ambient temperature range | -40 to +50 °C |
| Controls and Dimming | |
| Dimmable | Yes |
| Driver/power unit/transformer | Power supply unit (On/Off) |
| Control interface | Dynamix DMX |
| Mechanical and Housing | |
| Housing Material | Aluminum extruded |
| Optic material | Polymethyl methacrylate |
| Optical cover material | Glass |
| Fixation material | Aluminum |
| Housing Color | Dark gray |
| Mounting device | Mounting bracket adjustable |

| | |
|-------------------------------------|--|
| Optical cover shape | Flat |
| Optical cover finish | Clear |
| Overall length | 1,000 mm |
| Overall width | 45 mm |
| Overall height | 105 mm |
| Dimensions (Height x Width x Depth) | 105 x 45 x 1000 mm |
| Approval and Application | |
| Ingress protection code | IP66 [Dust penetration-protected, jet-proof] |
| Mech. impact protection code | IK06 [1 J] |
| Protection class IEC | Safety class I |

Initial Performance (IEC Compliant)

| | |
|-----------------------------|--------|
| Luminous flux tolerance | +/-10% |
| Initial chromaticity | 4 SDCM |
| Power consumption tolerance | +/-10% |

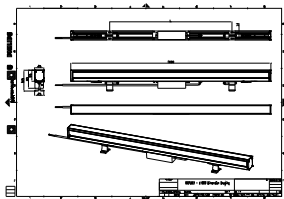
Application Conditions

| | |
|-------------------|-----|
| Maximum dim level | 10% |
|-------------------|-----|

Product Data

| | |
|---------------------------------|-----------------------------------|
| Order product name | BCP383 24LED 30K 220V 40 L100 DMX |
| Full product name | BCP383 24LED 30K 220V 40 L100 DMX |
| Full product code | 911401750932 |
| Order code | 911401750932 |
| Material Nr. (12NC) | 911401750932 |
| Numerator - Quantity Per Pack | 1 |
| Numerator - Packs per outer box | 6 |

Dimensional drawing



UniStrip G4

