



# UniStrip G4

## BCP383 6LED 40K 220V 40 L30 DMX

UniStrip G4 is a surface-mounted, exterior-rated LED luminaire that is designed for façade and outdoor architectural lighting applications.;One family that fits all your needs, wall washing, grazing and also linear flood lighting.;The robust mechanical and unique optical designs make it ideal for illuminating buildings facades, bridges, overpasses and any application that requires a linear lighting solution.;Available in white, monochromatic colours, RGB, RGBW and tunable white and DMX control option available with up to 8 pixels (8IDs) to give architects and designers the freedom to explore a wide range of concepts and design with no limitations.

### Product data

| General Information           |  |
|-------------------------------|--|
| Lamp colour code              | Neutral white  |
| Light source replaceable      | No   |
| Number of gear units          | 1 unit   |
| Driver/power unit/transformer | PSU [ Power supply unit]   |
| Driver included               | Yes  |
| Optical cover/lens type       | GT [ Tempered glass]   |
| Luminaire light beam spread   | 40° x 40°  |
| Control interface             | Dynamix DMX  |
| Connection                    | Flying leads/wires and 2 push-in connectors 4-pole                     |
| Cable                         | Cable 0.3 m without plug 3-pole + 2 cables 0.3 m with connector 4-pole |
| Protection class IEC          | Safety class I (I)   |
| Flammability mark             | F [ For mounting on normally flammable surfaces]                       |
| CE mark                       | CE mark  |
| Outdoor optic type            | Medium beam angle 40°  |
| Number of products on MCB     | 6  |
| LED engine type               | LED  |

| Light Technical                |                         |
|--------------------------------|-------------------------|
| Standard tilt angle post-top   | -                       |
| Standard tilt angle side entry | -                       |
| Operating and Electrical       |                         |
| Input voltage                  | 220 to 240 V            |
| Input frequency                | 50 to 60 Hz             |
| Inrush current                 | 60 A                    |
| Inrush time                    | 0.45 ms                 |
| Power factor (min.)            | 0.9                     |
| Controls and Dimming           |                         |
| Dimmable                       | Yes                     |
| Mechanical and Housing         |                         |
| Housing material               | Aluminum extruded       |
| Optic material                 | Polymethyl methacrylate |
| Optical cover/lens material    | Glass                   |
| Fixation material              | Aluminium               |

## UniStrip G4

|                           |                                    |
|---------------------------|------------------------------------|
| Mounting device           | MBA [ Mounting bracket adjustable] |
| Optical cover/lens shape  | Flat                               |
| Optical cover/lens finish | Clear                              |
| Overall length            | 300 mm                             |
| Overall width             | 45 mm                              |
| Overall height            | 105 mm                             |
| Colour                    | Dark Grey                          |

### Approval and Application

|                              |   |
|------------------------------|---|
| Ingress protection code      | IP66 [ Dust penetration-protected, jet-proof] |
| Mech. impact protection code | IK06 [ 1 J]                                   |

### Initial Performance (IEC Compliant)

|                                |         |
|--------------------------------|---------|
| Initial luminous flux          | 801 lm  |
| Luminous flux tolerance        | +/-10%  |
| Initial LED luminaire efficacy | 53 lm/W |
| Lamp colour temperature        | 4000 K  |
| Colour Rendering Index         | 80      |
| Initial chromaticity           | 4 SDCM  |

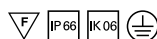
|                             |        |
|-----------------------------|--------|
| Initial input power         | 15 W   |
| Power consumption tolerance | +/-10% |

### Application Conditions

|                           |               |
|---------------------------|---------------|
| Ambient temperature range | -40 to +50 °C |
| Maximum dimming level     | 10%           |

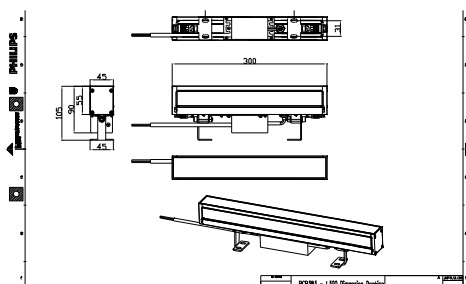
### Product Data

|                                 |                                 |
|---------------------------------|---------------------------------|
| Full product code               | 911401751132                    |
| Order product name              | BCP383 6LED 40K 220V 40 L30 DMX |
| Order code                      | 911401751132                    |
| Numerator – quantity per pack   | 1                               |
| Numerator – packs per outer box | 12                              |
| Material no. (12NC)             | 911401751132                    |
| Net weight (piece)              | 1.399 kg                        |



## Warnings and Safety

### Dimensional drawing



BCP280/383/384/385 UNiStrip G3

