



UniStrip G4

BCP383 6LED RGBNW 220V A4 L30 DMX

UniStrip G4, 426 lm, 15 W, Red, green, blue and white, Asymmetrical, 25° x 40°, Dynamic DMX, Safety class I, Mounting bracket adjustable

UniStrip G4 is a surface mounted, exterior-rated LED luminaire that is designed for façade and outdoor architectural lighting applications. One family that fits all your needs, wall washing, grazing and also linear flood lighting. The robust mechanical and unique optical designs make it ideal for illuminating buildings facades, bridges, overpasses and any application that requires a linear lighting solution. Available in white, monochromatic colors, RGB, RGBW and tunable white and DMX control option available with up to 8 pixels (8IDs) to give architects and designers the freedom to explore a wide range of concepts and design with no limitations.

Warnings and Safety

- For outdoor use only

Product data

General Information	
Light source replaceable	No
Number of gear units	1 unit
Driver included	Yes
Light source engine type	LED
Lighting Technology	LED
CE mark	CE mark
Flammability mark	For mounting on normally flammable surfaces

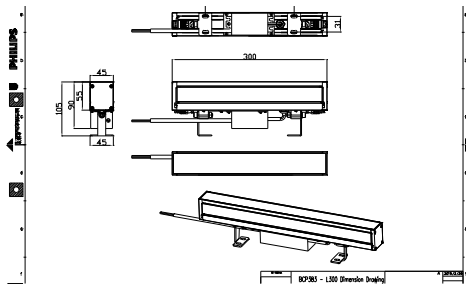
Light Technical	
Luminous Flux	426 lm
Standard tilt angle posttop	-
Standard tilt angle side entry	-
Correlated Color Temperature (Nom)	-
Luminous Efficacy (rated) (Nom)	28 lm/W
Color rendering index (CRI)	-
Light source color	Red, green, blue and white
Optical cover type	Clear flat
Luminaire light beam spread	25° x 40°

UniStrip G4

Optic type outdoor	Asymmetrical
Operating and Electrical	
Input Voltage	220 to 240 V
Line Frequency	50 to 60 Hz
Inrush current	60 A
Inrush time	0.45 ms
Power Consumption	15 W
Power Factor (Fraction)	0.9
Connection	Flying leads/wires and 2 Push-in connector 4-pole
Cable	Cable 0.3 m without plug 3-pole + 2 Cables 0.3 m with connector 4-pole
Number of products on MCB of 16 A type B 6	
Temperature	
Ambient temperature range	-40 to +50 °C
Controls and Dimming	
Dimmable	Yes
Driver/power unit/transformer	Power supply unit (On/Off)
Control interface	Dynamic DMX
Mechanical and Housing	
Housing Material	Aluminum extruded
Optic material	Polymethyl methacrylate
Optical cover material	Tempered glass
Fixation material	Aluminum
Housing Color	Dark gray
Mounting device	Mounting bracket adjustable
Optical cover shape	Flat

Optical cover finish	Clear
Overall length	300 mm
Overall width	45 mm
Overall height	105 mm
Dimensions (Height x Width x Depth)	105 x 45 x 300 mm
Approval and Application	
Ingress protection code	IP66 [Dust penetration-protected, jet-proof]
Mech. impact protection code	IK06 [1 J]
Protection class IEC	Safety class I
Initial Performance (IEC Compliant)	
Luminous flux tolerance	+/-10%
Power consumption tolerance	+/-10%
Application Conditions	
Maximum dim level	10%
Product Data	
Order product name	BCP383 6LED RGBNW 220V A4 L30 DMX
Full product name	BCP383 6LED RGBNW 220V A4 L30 DMX
Full product code	871951494531999
Order code	911401751142
Material Nr. (12NC)	911401751142
Numerator - Quantity Per Pack	1
EAN/UPC - Product/Case	8719514945319
Numerator - Packs per outer box	12
EAN/UPC - Case	8719514945319

Dimensional drawing



UniStrip G4

