

# UniStrip G4

## BCP384 48LED RGBNW 220V A2 L100 DMX

UniStrip G4, 3164 lm, 80 W, Red, green, blue and white, Asymmetrical, 16° x 35°, Dynamic DMX, Safety class I, Mounting bracket adjustable

UniStrip G4 is a surface mounted, exterior-rated LED luminaire that is designed for façade and outdoor architectural lighting applications. One family that fits all your needs, wall washing, grazing and also linear flood lighting. The robust mechanical and unique optical designs make it ideal for illuminating buildings facades, bridges, overpasses and any application that requires a linear lighting solution. Available in white, monochromatic colors, RGB, RGBW and tunable white and DMX control option available with up to 8 pixels (8IDs) to give architects and designers the freedom to explore a wide range of concepts and design with no limitations.

### Warnings and Safety

- For outdoor use only

### Product data

General Information		Light Technical	
Light source replaceable	No	Luminous Flux	3,164 lm
Number of gear units	1 unit	Standard tilt angle posttop	-
Driver included	Yes	Standard tilt angle side entry	-
Light source engine type	LED	Correlated Color Temperature (Nom)	-
Lighting Technology	LED	Luminous Efficacy (rated) (Nom)	40 lm/W
CE mark	CE mark	Color rendering index (CRI)	-
Flammability mark	For mounting on normally flammable surfaces	Light source color	Red, green, blue and white
		Optical cover type	Clear flat
		Luminaire light beam spread	16° x 35°

# UniStrip G4

Optic type outdoor	Asymmetrical
<b>Operating and Electrical</b>	
Input Voltage	220 to 240 V
Line Frequency	50 to 60 Hz
Inrush current	60 A
Inrush time	0.85 ms
Power Consumption	80 W
Power Factor (Fraction)	0.9
Connection	Flying leads/wires and 2 Push-in connector 4-pole
Cable	Cable 0.3 m without plug 3-pole + 2 Cables 0.3 m with connector 4-pole
Number of products on MCB of 16 A type B 4	
<b>Temperature</b>	
Ambient temperature range	-40 to +50 °C
<b>Controls and Dimming</b>	
Dimmable	Yes
Driver/power unit/transformer	Power supply unit (On/Off)
Control interface	Dynamic DMX
<b>Mechanical and Housing</b>	
Housing Material	Aluminum extruded
Optic material	Polymethyl methacrylate
Optical cover material	Tempered glass
Fixation material	Aluminum
Housing Color	Dark gray
Mounting device	Mounting bracket adjustable

Optical cover shape	Flat
Optical cover finish	Clear
Overall length	1,000 mm
Overall width	80 mm
Overall height	105 mm
Dimensions (Height x Width x Depth)	105 x 80 x 1000 mm

## Approval and Application

Ingress protection code	IP66 [Dust penetration-protected, jet-proof]
Mech. impact protection code	IK06 [1 J]
Protection class IEC	Safety class I

## Initial Performance (IEC Compliant)

Luminous flux tolerance	+/-10%
Power consumption tolerance	+/-10%

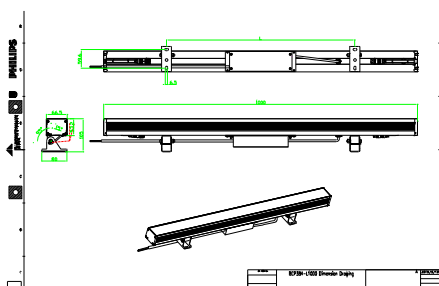
## Application Conditions

Maximum dim level	10%
-------------------	-----

## Product Data

Order product name	BCP384 48LED RGBNW 220V A2 L100 DMX
Full product name	BCP384 48LED RGBNW 220V A2 L100 DMX
Full product code	911401751462
Order code	911401751462
Material Nr. (12NC)	911401751462
Numerator - Quantity Per Pack	1
Numerator - Packs per outer box	4

## Dimensional drawing



## UniStrip G4

