

UniStrip G4

BCP384 9LED 40K 220V A2 L30 DMX

UniStrip G4, 1220 lm, 20 W, Neutral white, Asymmetrical, 16° x 35°, Dynamix DMX, Safety class I, Mounting bracket adjustable

UniStrip G4 is a surface mounted, exterior-rated LED luminaire that is designed for façade and outdoor architectural lighting applications. One family that fits all your needs, wall washing, grazing and also linear flood lighting. The robust mechanical and unique optical designs make it ideal for illuminating buildings facades, bridges, overpasses and any application that requires a linear lighting solution. Available in white, monochromatic colors, RGB, RGBW and tunable white and DMX control option available with up to 8 pixels (8IDs) to give architects and designers the freedom to explore a wide range of concepts and design with no limitations.

Warnings and Safety

- For outdoor use only

Product data

| General Information | | | |
|--------------------------|---|------------------------------------|----------------|
| Light source replaceable | No | Standard tilt angle posttop | - |
| Number of gear units | 1 unit | Standard tilt angle side entry | - |
| Driver included | Yes | Correlated Color Temperature (Nom) | 4000 K |
| Light source engine type | LED | Luminous Efficacy (rated) (Nom) | 61 lm/W |
| Lighting Technology | LED | Color rendering index (CRI) | 80 |
| CE mark | CE mark | Light source color | Neutral white |
| Flammability mark | For mounting on normally flammable surfaces | Optical cover type | Tempered glass |
| | | Luminaire light beam spread | 16° x 35° |
| | | Optic type outdoor | Asymmetrical |
| Light Technical | | Operating and Electrical | |
| Luminous Flux | 1,220 lm | Input Voltage | 220 to 240 V |

UniStrip G4

| | |
|--|---|
| Line Frequency | 50 to 60 Hz |
| Inrush current | 40 A |
| Inrush time | 0.45 ms |
| Power Consumption | 20 W |
| Power Factor (Fraction) | 0.9 |
| Connection | Flying leads/wires and 2 Push-in connector 4-pole |
| Cable | Cable 0.3 m without plug 3-pole + 2 Cables 0.3 m with connector 4-pole |
| Number of products on MCB of 16 A type B 6 | |

Temperature

| | |
|---------------------------|---------------|
| Ambient temperature range | -40 to +50 °C |
|---------------------------|---------------|

Controls and Dimming

| | |
|-------------------------------|----------------------------|
| Dimmable | Yes |
| Driver/power unit/transformer | Power supply unit (On/Off) |
| Control interface | Dynamix DMX |

Mechanical and Housing

| | |
|------------------------|-----------------------------|
| Housing Material | Aluminum extruded |
| Optic material | Polymethyl methacrylate |
| Optical cover material | Glass |
| Fixation material | Aluminum |
| Housing Color | Dark gray |
| Mounting device | Mounting bracket adjustable |
| Optical cover shape | Flat |
| Optical cover finish | Clear |

| | |
|-------------------------------------|-------------------|
| Overall length | 300 mm |
| Overall width | 80 mm |
| Overall height | 105 mm |
| Dimensions (Height x Width x Depth) | 105 x 80 x 300 mm |

Approval and Application

| | |
|------------------------------|--|
| Ingress protection code | IP66 [Dust penetration-protected, jet-proof] |
| Mech. impact protection code | IK06 [1 J] |
| Protection class IEC | Safety class I |

Initial Performance (IEC Compliant)

| | |
|-----------------------------|--------|
| Luminous flux tolerance | +/-10% |
| Initial chromaticity | 4 SDCM |
| Power consumption tolerance | +/-10% |

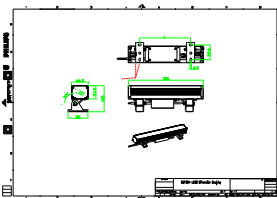
Application Conditions

| | |
|-------------------|-----|
| Maximum dim level | 10% |
|-------------------|-----|

Product Data

| | |
|---------------------------------|---------------------------------|
| Order product name | BCP384 9LED 40K 220V A2 L30 DMX |
| Full product name | BCP384 9LED 40K 220V A2 L30 DMX |
| Full product code | 911401751592 |
| Order code | 911401751592 |
| Material Nr. (12NC) | 911401751592 |
| Numerator - Quantity Per Pack | 1 |
| Numerator - Packs per outer box | 8 |

Dimensional drawing



UniStrip G4

