



UniStrip G4

BCP384 9LED 40K 220V 40 L30

UniStrip G4, 1282 lm, 20 W, Neutral white, Medium beam angle 40°, 40° x 40°, Safety class I, Mounting bracket adjustable

UniStrip G4 is a surface mounted, exterior-rated LED luminaire that is designed for façade and outdoor architectural lighting applications. One family that fits all your needs, wall washing, grazing and also linear flood lighting. The robust mechanical and unique optical designs make it ideal for illuminating buildings facades, bridges, overpasses and any application that requires a linear lighting solution. Available in white, monochromatic colors, RGB, RGBW and tunable white and DMX control option available with up to 8 pixels (8IDs) to give architects and designers the freedom to explore a wide range of concepts and design with no limitations.

Warnings and Safety

- For outdoor use only

Product data

General Information			
Light source replaceable	No	Standard tilt angle posttop	-
Number of gear units	1 unit	Standard tilt angle side entry	-
Driver included	Yes	Correlated Color Temperature (Nom)	4000 K
Light source engine type	LED	Luminous Efficacy (rated) (Nom)	64 lm/W
Lighting Technology	LED	Color rendering index (CRI)	80
CE mark	CE mark	Light source color	Neutral white
Flammability mark	For mounting on normally flammable surfaces	Optical cover type	Tempered glass
		Luminaire light beam spread	40° x 40°
		Optic type outdoor	Medium beam angle 40°
Light Technical		Operating and Electrical	
Luminous Flux	1,282 lm	Input Voltage	220 to 240 V

UniStrip G4

Line Frequency	50 to 60 Hz
Inrush current	40 A
Inrush time	0.45 ms
Power Consumption	20 W
Power Factor (Fraction)	0.9
Connection	Flying leads/wires
Cable	Cable 0.3 m without plug 3-pole
Number of products on MCB of 16 A type B	6

Temperature

Ambient temperature range	-40 to +50 °C
---------------------------	---------------

Controls and Dimming

Dimmable	No
Driver/power unit/transformer	Power supply unit (On/Off)
Control interface	-

Mechanical and Housing

Housing Material	Aluminum extruded
Optic material	Polymethyl methacrylate
Optical cover material	Glass
Fixation material	Aluminum
Housing Color	Dark gray
Mounting device	Mounting bracket adjustable
Optical cover shape	Flat
Optical cover finish	Clear

Overall length	300 mm
Overall width	80 mm
Overall height	105 mm
Dimensions (Height x Width x Depth)	105 x 80 x 300 mm

Approval and Application

Ingress protection code	IP66 [Dust penetration-protected, jet-proof]
Mech. impact protection code	IK06 [1 J]
Protection class IEC	Safety class I

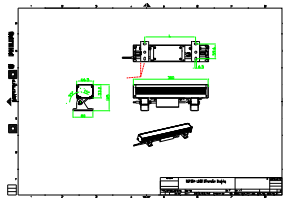
Initial Performance (IEC Compliant)

Luminous flux tolerance	+/-10%
Initial chromaticity	4 SDCM
Power consumption tolerance	+/-10%

Product Data

Order product name	BCP384 9LED 40K 220V 40 L30
Full product name	BCP384 9LED 40K 220V 40 L30
Full product code	911401751602
Order code	911401751602
Material Nr. (12NC)	911401751602
Numerator - Quantity Per Pack	1
Numerator - Packs per outer box	8

Dimensional drawing



UniStrip G4

