



# UniStrip G4

## BCP385 48LED 27K 220V 7 L100 DMX

UniStrip G4 is a surface-mounted, exterior-rated LED luminaire that is designed for façade and outdoor architectural lighting applications.;One family that fits all your needs, wall washing, grazing and also linear flood lighting.;The robust mechanical and unique optical designs make it ideal for illuminating buildings facades, bridges, overpasses and any application that requires a linear lighting solution.;Available in white, monochromatic colours, RGB, RGBW and tunable white and DMX control option available with up to 8 pixels (8IDs) to give architects and designers the freedom to explore a wide range of concepts and design with no limitations.

### Product data

General Information	
Lamp colour code	Warm white
Light source replaceable	No
Number of gear units	1 unit
Driver/power unit/transformer	PSU [ Power supply unit]
Driver included	Yes
Optical cover/lens type	GT [ Tempered glass]
Luminaire light beam spread	7.5° x 7.5°
Control interface	Dynamix DMX
Connection	Flying leads/wires and 2 push-in connectors 4-pole
Cable	Cable 0.3 m without plug 3-pole + 2 cables 0.3 m with connector 4-pole
Protection class IEC	Safety class I (I)
Flammability mark	F [ For mounting on normally flammable surfaces]
CE mark	CE mark
Outdoor optic type	Narrow beam angle 7.5°
Number of products on MCB	3
LED engine type	LED

Light Technical	
Standard tilt angle post-top	-
Standard tilt angle side entry	-
Operating and Electrical	
Input voltage	220 to 240 V
Input frequency	50 to 60 Hz
Inrush current	70 A
Inrush time	0.65 ms
Power factor (min.)	0.9
Controls and Dimming	
Dimmable	Yes
Mechanical and Housing	
Housing material	Aluminum extruded
Optic material	Polymethyl methacrylate
Optical cover/lens material	Glass
Fixation material	Aluminium

## UniStrip G4

Mounting device	MBA [ Mounting bracket adjustable]
Optical cover/lens shape	Flat
Optical cover/lens finish	Clear
Overall length	1000 mm
Overall width	88 mm
Overall height	158 mm
Colour	Dark Grey

### Approval and Application

Ingress protection code	IP66 [ Dust penetration-protected, jet-proof]
Mech. impact protection code	IK06 [ 1 J]

### Initial Performance (IEC Compliant)

Initial luminous flux	5698 lm
Luminous flux tolerance	+/-10%
Initial LED luminaire efficacy	57 lm/W
Lamp colour temperature	2700 K
Colour Rendering Index	80
Initial chromaticity	4 SDCM

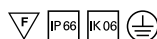
Initial input power	100 W
Power consumption tolerance	+/-10%

### Application Conditions

Ambient temperature range	-40 to +50 °C
Maximum dimming level	10%

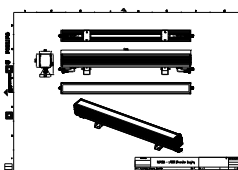
### Product Data

Full product code	911401751942
Order product name	BCP385 48LED 27K 220V 7 L100 DMX
Order code	911401751942
Numerator – quantity per pack	1
Numerator – packs per outer box	2
Material no. (12NC)	911401751942
Net weight (piece)	3.949 kg



## Warnings and Safety

### Dimensional drawing



BCP280/383/384/385 UNiStrip G3

