



UniStrip G4

BCP385 48LED 27K 220V A1 L100 DMX

UniStrip G4, 5288 lm, 100 W, Warm white, Asymmetrical, 7.5° x 27°, Dynamix DMX, Safety class I, Mounting bracket adjustable

UniStrip G4 is a surface mounted, exterior-rated LED luminaire that is designed for façade and outdoor architectural lighting applications. One family that fits all your needs, wall washing, grazing and also linear flood lighting. The robust mechanical and unique optical designs make it ideal for illuminating buildings facades, bridges, overpasses and any application that requires a linear lighting solution. Available in white, monochromatic colors, RGB, RGBW and tunable white and DMX control option available with up to 8 pixels (8IDs) to give architects and designers the freedom to explore a wide range of concepts and design with no limitations.

Warnings and Safety

- For outdoor use only

Product data

General Information			
Light source replaceable	No	Standard tilt angle posttop	-
Number of gear units	1 unit	Standard tilt angle side entry	-
Driver included	Yes	Correlated Color Temperature (Nom)	2700 K
Light source engine type	LED	Luminous Efficacy (rated) (Nom)	53 lm/W
Lighting Technology	LED	Color rendering index (CRI)	80
CE mark	CE mark	Light source color	Warm white
Flammability mark	For mounting on normally flammable surfaces	Optical cover type	Tempered glass
		Luminaire light beam spread	7.5° x 27°
		Optic type outdoor	Asymmetrical
Light Technical		Operating and Electrical	
Luminous Flux	5,288 lm	Input Voltage	220 to 240 V

UniStrip G4

Line Frequency	50 to 60 Hz
Inrush current	70 A
Inrush time	0.65 ms
Power Consumption	100 W
Power Factor (Fraction)	0.9
Connection	Flying leads/wires and 2 Push-in connector 4-pole
Cable	Cable 0.3 m without plug 3-pole + 2 Cables 0.3 m with connector 4-pole
Number of products on MCB of 16 A type B 3	

Temperature

Ambient temperature range	-40 to +50 °C
---------------------------	---------------

Controls and Dimming

Dimmable	Yes
Driver/power unit/transformer	Power supply unit (On/Off)
Control interface	Dynamix DMX

Mechanical and Housing

Housing Material	Aluminum extruded
Optic material	Polymethyl methacrylate
Optical cover material	Glass
Fixation material	Aluminum
Housing Color	Dark gray
Mounting device	Mounting bracket adjustable
Optical cover shape	Flat
Optical cover finish	Clear

Overall length	1,000 mm
Overall width	88 mm
Overall height	158 mm
Dimensions (Height x Width x Depth)	158 x 88 x 1000 mm

Approval and Application

Ingress protection code	IP66 [Dust penetration-protected, jet-proof]
Mech. impact protection code	IK06 [1 J]
Protection class IEC	Safety class I

Initial Performance (IEC Compliant)

Luminous flux tolerance	+/-10%
Initial chromaticity	4 SDCM
Power consumption tolerance	+/-10%

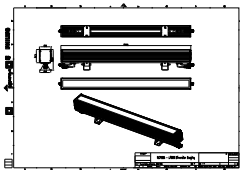
Application Conditions

Maximum dim level	10%
-------------------	-----

Product Data

Order product name	BCP385 48LED 27K 220V A1 L100 DMX
Full product name	BCP385 48LED 27K 220V A1 L100 DMX
Full product code	911401751962
Order code	911401751962
Material Nr. (12NC)	911401751962
Numerator - Quantity Per Pack	1
Numerator - Packs per outer box	2

Dimensional drawing



UniStrip G4

