



Smart Post-top G3

BGP161 LED2500/NW PSU 220-240V 7043 GM

Smart Post Top G3 inherits the classic look and style of the previous generation with improved system efficacy and light quality.;The Smart Post Top G3 optimised optical design increases both horizontal and vertical uniformity. The highly efficient thermal system design ensures maximum heat transfer and longer LED service life.;This reliable luminaire system operates well in both low and high temperature environments. It offers more than 11 years expected life, reducing maintenance frequency and cost (based on a 50,000 hour rated life and 12 hours operation per day);It provides a comfortable and safe atmosphere to gardens, residential areas, courtyards, side streets, squares, parks & playgrounds.

Product data

General Information		Light Technical	
Lamp family code	-	ENEC mark	-
Lamp colour code	Neutral white	Warranty period	3 years
Light source replaceable	Yes	Outdoor optic type	Symmetrical
Number of gear units	1 unit	Constant light output	No
Driver/power unit/transformer	PSU [Power supply unit]	Number of products on MCB	-
Driver included	Yes	LED engine type	LED
Optical cover/lens type	Acrylate cover and semi-matt high-reflective optic		
Luminaire light beam spread	-	Upward light output ratio	0
Control interface	-	Standard tilt angle post-top	-
Connection	Flying leads/wires	Standard tilt angle side entry	-
Cable	Cable 450 mm without plug		
Protection class IEC	Safety class I (I)	Operating and Electrical	
Flammability mark	NO [-]	Input voltage	220 to 240 V
CE mark	-	Input frequency	50 to 60 Hz
		Inrush current	2.1 A

Smart Post-top G3

Inrush time	22.3 ms
Power factor (min.)	0.9

Controls and Dimming

Dimmable	No
----------	----

Mechanical and Housing

Housing material	Aluminum die-cast
Reflector material	Acrylate
Optic material	Acrylate
Optical cover/lens material	Acrylate
Fixation material	Stainless steel
Mounting device	60P [Post-top for diameter 60 mm]
Optical cover/lens shape	Flat
Optical cover/lens finish	Frosted
Overall height	265 mm
Overall diameter	578 mm
Colour	Dark Grey

Approval and Application

Ingress protection code	IP65 [Dust penetration-protected, jet-proof]
Mech. impact protection code	IK07 [2 J reinforced]
Surge protection (common/differential)	4/2 kV

Initial Performance (IEC Compliant)

Initial luminous flux	2500 lm
-----------------------	---------

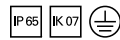
Luminous flux tolerance	+/-10%
Initial LED luminaire efficacy	86.21 lm/W
Lamp colour temperature	4000 K
Colour Rendering Index	70
Initial chromaticity	SDCM>5
Initial input power	29 W
Power consumption tolerance	+/-10%

Application Conditions

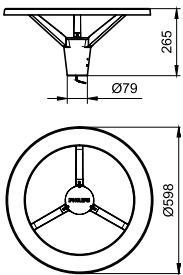
Ambient temperature range	-40 to +50 °C
Maximum dimming level	Not applicable

Product Data

Full product code	911401834898
Order product name	BGP161 LED2500/NW PSU 220-240V 7043 GM
Order code	01834898
Numerator – quantity per pack	1
Numerator – packs per outer box	2
Material no. (12NC)	911401834898
Net weight (piece)	4.499 kg



Dimensional drawing



BGP161 Smart Post-top G3

Smart Post-top G3

