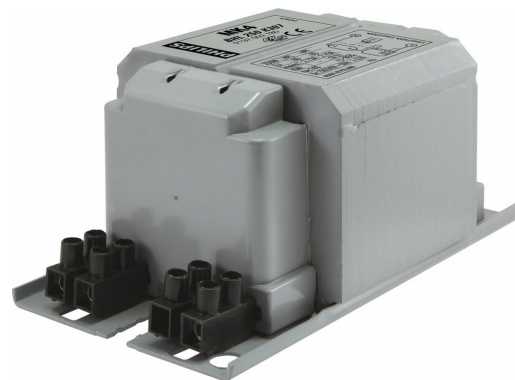


PHILIPS

Lighting



HID-Basic BHL MK4 for HPL/HPI

BHL 250 K307 230/240V 50Hz BC2-134

Impregnated electromagnetic copper/iron ballasts for HPL, HPI (Plus) and SON-H lamps

Product data

General Information	
Application code	K307-A2
Design	BC2-134
Lamp type	HPL/HPI
Number of lamps	1 piece/unit

Operating and Electrical	
Input voltage	230 V (default) or 240 V
Input frequency	50 Hz
Power factor 100% load (nom.)	0.85
Mains voltage performance (AC)	-8% - +6%
Mains voltage safety (AC)	-10% - +10%
Input current with PF correction	1.40 A
Input current without PF Correction	2.13 A
Power factor without PF compensation (nom.)	0.55
Power losses (nom.)	18.5/19.4 W

Wiring	
Wire strip length	7.0 mm
Ballast contact wire cross section	1.00-2.50 mm ²

Connector type	
Connector type	Screw

System characteristics	
Capacitor	18µF/250V
Rated ballast-lamp power	250 W
Recommended ignitor	no ignitor for HPL-N for HPI-T ignitor SI51 (913619519966)

Temperature	
T storage (max.)	130 °C
T storage (min.)	-30 °C
T winding (max.)	130 °C
Delta-T normal conditions	80/85 °C

Approval and Application	
Approval marks	CE marking ENEC certificate

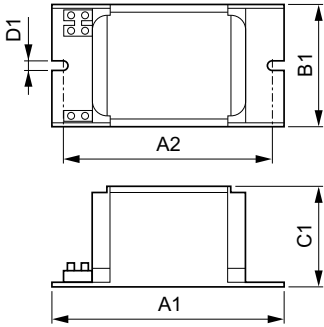
Product Data	
Full product code	872790088701300
Order product name	BHL 250 K307-A2 230/240V 50Hz BC2-134
EAN/UPC – product	8711500881588

HID-Basic BHL MK4 for HPL/HPI

Order code	88701300
Local Code	BHL250K307
Numerator – quantity per pack	1
Numerator – packs per outer box	6

Material no. (12NC)	913700278026
Net weight (piece)	2.245 kg

Dimensional drawing



BHL 250 K307 230/240V 50Hz BC2-134

Product	D1	C1	A1	A2	B1
BHL 250 K307-A2 230/240V 50Hz BC2-134	6.2 mm	65.0 mm	134.0 mm	113.0 mm	76.0 mm

