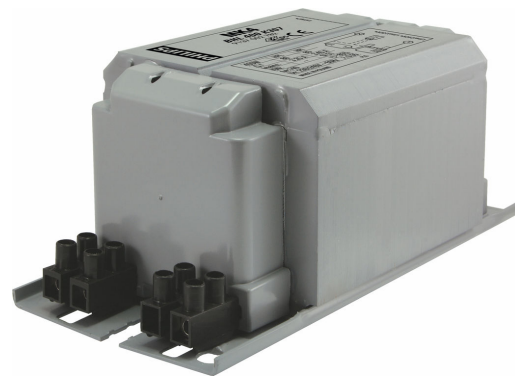


PHILIPS

Lighting



HID-Basic BHL MK4 for HPL/HPI

BHL 400 K307 230/240V 50Hz BC2-160

Impregnated electromagnetic copper/iron ballasts for HPL, HPI (Plus) and SON-H lamps

Product data

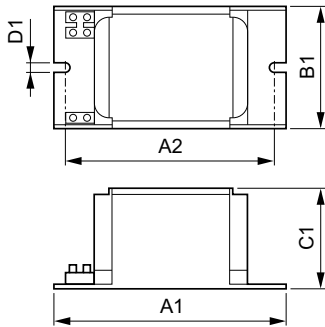
General Information		Connector type	
Application code	K307-A2		Screw
Design	BC2-160	System characteristics	
Lamp type	HPL/HPI	Rated ballast-lamp power	400 W
Number of lamps	1 piece/unit	Recommended ignitor	no ignitor for HPL-N for HPI-T ignitor SI51 (913619519966)
Operating and Electrical		Temperature	
Input voltage	230 V (default) or 240 V	T storage (max.)	130 °C
Input frequency	50 Hz	T storage (min.)	-30 °C
Power factor 100% load (nom.)	0.85	T winding (max.)	130 °C
Mains voltage performance (AC)	-8%+6%	Delta-T normal conditions	80/85 °C
Mains voltage safety (AC)	-10%+10%	Approval and Application	
Input current with PF correction	2.15 A	Approval marks	CE marking ENEC certificate
Input current without PF Correction	3.25/3.4 A	Product Data	
Power factor without PF compensation (nom.)	0.55	Full product code	872790088703700
Power losses (nom.)	25.8/27 W	Order product name	BHL 400 K307-A2 230/240V 50Hz BC2-160
Wiring		EAN/UPC – product	8711500881595
Wire strip length	7.0 mm	Order code	88703700
Ballast contact wire cross section	1.00-2.50 mm ²		

HID-Basic BHL MK4 for HPL/HPI

Numerator – quantity per pack	1
Numerator – packs per outer box	6
Material no. (12NC)	913700278226

Net weight (piece)	3.240 kg
--------------------	----------

Dimensional drawing



BHL 400 K307 230/240V 50Hz BC2-160

Product	D1	C1	A1	A2	B1
BHL 400 K307-A2 230/240V 50Hz BC2-160	6.2 mm	65.0 mm	160.0 mm	139.0 mm	76.0 mm

