



HF-Matchbox Red

HF-M RED 209 SH

HF-Matchbox Red is an affordable, reliable, compact, lightweight and high-frequency ballast for use with system wattages below 25 W in combination with TL mini, TL-D, TL5 and TL5c, PL-T/C, and PL-L/S lamps. The HF-M Red range has a robust design, meets all relevant international safety and performance standards and has an energy efficiency index (CELMA EEI) of A2.

Product data

General Information	
Lamp type	-
Number of lamps	1 piece/unit
Number of products on MCB (16 A type B) (nom.)	73
Automatic restart	Yes
Operating and Electrical	
Input voltage	220 to 240 V
Input frequency	50 to 60 Hz
Power factor 100% load (nom.)	0.61
Ignition time (max.)	2.15 s
Mains voltage performance (AC)	-8%~+6%
Mains voltage safety (AC)	-10%~+10%
Power losses (nom.)	2.5-2.8 W
Wiring	
Connector type input terminals	Insert
Colour input terminals	Orange
Colour output terminals	Grey
Connector type output terminals	Insert
Cable length hot-wiring	0.75 m

Wire strip length	8.0-9.0 mm
Input terminal cross section	0.50-1.50 mm ²
Output terminal cross section	0.50-1.50 mm ²
System characteristics	
Rated ballast-lamp power	9 W
System power on PL-S	9.5/9.8/10.3 W
Rated lamp power on PL-S	9 W
Power loss on PL-S	2.5/2.6/2.8 W
Lamp power on PL-S	7/7.2/7.5 W
Temperature	
T ambient (max.)	50 °C
T ambient (min.)	-25 °C
T-Case maximum (max.)	80 °C
Mechanical and Housing	
Housing	SH
Emergency Operation	
Battery voltage lamp ignition	194-254 V

HF-Matchbox Red

Approval and Application

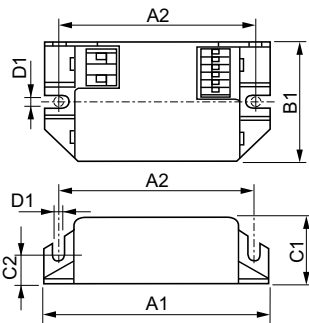
IP classification	IP 20 [Ingress Protection 20]
Approval marks	F-Marking CE marking ENEC certificate

Product Data

Full product code	871829115271200
Order product name	HF-M RED 209 SH
EAN/UPC – product	8718291152712

Order code	15271200
Local Code	HFMRED209SH
Numerator – quantity per pack	1
Numerator – packs per outer box	50
Material no. (12NC)	913700425866
Net weight (piece)	0.040 kg

Dimensional drawing



HF-M RED 209 SH

Product	D1	C1	C2	A1	A2	B1
HF-M RED 209 SH	4.4 mm	22.0 mm	10.0 mm	80.0 mm	84.0 mm	40.0 mm

