



HF-Matchbox Red

HF-M RED 209 SH

HF-Matchbox Red is an affordable, reliable, compact, lightweight and high-frequency ballast for use with system wattages below 25 W in combination with TL mini, TL-D, TL5 and TL5c, PL-T/C, and PL-L/S lamps. The HF-M Red range has a robust design, meets all relevant international safety and performance standards and has an energy efficiency index (CELMA EEI) of A2. The ballast is primarily designed for Indoor application. For outdoor application, the luminaire should be minimum Classland need to be sufficiently protected against water & dust. The installation should also be guard against any lightening surge or any other necessary electrical protection as deemed in such typical installation & application.

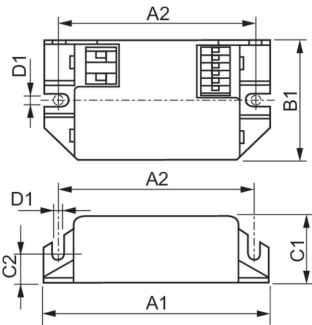
Product data

Operating and Electrical	
Input Voltage	220 to 240 V
Line Frequency	50 to 60 Hz
Input Frequency	50 to 60 Hz
Number of Products on MCB (16A Type B) (Nom)	73
Wiring	
Connector Type Input Terminals	Insert
Color Input Terminals	Orange
Color Output Terminals	Grey
Connector Type Output Terminals	Insert
Temperature	
Ambient temperature range	-25 °C to 50 °C
T-Case Maximum (Max)	80 °C
Mechanical and Housing	
Housing	SH

Approval and Application	
Ingress protection code	IP20 [Finger-protected]
Approval Marks	F-Marking CE marking ENEC certificate
Product Data	
Order product name	HF-M RED 209 SH
Full product name	HF-M RED 209 SH
Full product code	871829115271200
Order code	913700425866
Material Nr. (12NC)	913700425866
Numerator - Quantity Per Pack	1
EAN/UPC - Product/Case	8718291152712
Numerator - Packs per outer box	50
EAN/UPC - Case	8718291152729

HF-Matchbox Red

Dimensional drawing



Product	D1	C1	C2	A1	A2	B1
HF-M RED 209 SH	4.4 mm	22.0 mm	10.0 mm	80.0 mm	84.0 mm	40.0 mm

