



HF-Performer II for PL-T/C/R/L/TL5C lamps

HF-P 2 22-42 PL-T/C/L/TL5C EII 220-240V

HF-Performer EII PL-T/C/R/T5c is a sustainable, slim and high-frequency electronic ballast for a wide range of CFL- ni applications. It is ideal for applications where high energy efficiency is required. The HF-Performer EII range has a robust design, meets all relevant international safety and performance standards and is energy-efficient (CELMA EEI A2).

Product data

Operating and Electrical	
Input Voltage	220 to 240 V
Line Frequency	50 to 60 Hz
Input frequency	50 to 60 Hz
Inrush current width	0.35 ms
Inrush current peak (max.)	31 A
Number of products on MCB (16 A type B) (nom.)	12
Wiring	
Connector type input terminals	Insert
Connector type output terminals	Insert
Temperature	
Ambient temperature range	-25°C to 50°C
T-case lifetime (nom.)	75 °C

T-Case maximum (max.)	75 °C
Approval and Application	
Ingress protection code	IP20 [Finger-protected]
Energy efficiency index	A2
Safety standard	IEC 61347-2-3
Environmental standard	ISO 14001
Approval marks	CE marking ENEC certificate VDE-EMV certificate

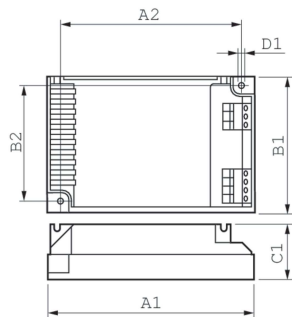
Product Data	
Order product name	HF-P 2 22-42 PL-T/C/L/TL5C EII 220-240V
Full product name	HF-P 2 22-42 PL-T/C/L/TL5C EII 220-240V
Full EOC	871150091399930
Order code	91399930

HF-Performer II for PL-T/C/R/L/TL5C lamps

Material no. (12 NC)	913700630866
Local order code	HFP22242PLT/C/L
SAP numerator – quantity per pack	1
EAN/UPC – Product/Case	8711500913999

Numerator – packs per outer box	12
EAN/UPC – Case	8711500914019

Dimensional drawing



Product	D1	C1	A1	A2	B1	B2
HF-P 2 22-42 PL-T/C/L/ TL5C EII 220-240V	4.5 mm	30.0 mm	103.0 mm	93.5 mm	67.0 mm	57.5 mm

