



HF-Performer III for PL-T/C lamps

HF-P 1/226 PL-T/C III 220-240V

HF-Performer III PL-T/C is a sustainable, slim and high-frequency electronic ballast for PL-T and PL-C fluorescent lamps. It is ideal for applications where high energy efficiency is required. The HF-Performer III range has a robust design, meets all relevant international safety and performance standards and is energy efficient (CELMA EEI A2). The ballast is primarily designed for Indoor application. For outdoor application, the luminaire should be minimum Classland need to be sufficiently protected against water & dust. The installation should also be guard against any lightening surge or any other necessary electrical protection as deemed in such typical installation & application.

Product data

Operating and Electrical	
Input Voltage	220 to 240 V
Line Frequency	50 to 60 Hz
Input Frequency	50 to 60 Hz
Inrush Current Width	0.250 ms
Inrush Current Peak (Max)	18 A
Number of Products on MCB (16A Type B) (Nom)	28
Wiring	
Connector Type Input Terminals	Insert
Connector Type Output Terminals	Insert
Cable Length From Device to Lamp	1 m
Temperature	
Ambient temperature range	-25 °C to 50 °C

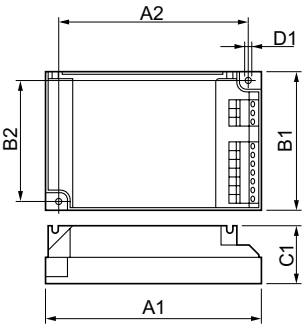
T-Case Lifetime (Nom)	75 °C
T-Case Maximum (Max)	75 °C
Mechanical and Housing	
Housing	S 103x67x30
Approval and Application	
Ingress protection code	IP20 [Finger-protected]
Energy Efficiency Index	A2/A2 BAT
Safety Standard	IEC 61347-2-3
Environmental Standard	ISO 14001
Approval Marks	CE marking ENEC certificate VDE-EMV certificate
Product Data	
Order product name	HF-P 1/226 PL-T/C III 220-240V

HF-Performer III for PL-T/C lamps

Full product name	HF-P 1/226 PL-T/C III 220-240V
Full product code	872790083423900
Order code	913700648866
Material Nr. (12NC)	913700648866
Numerator - Quantity Per Pack	1

EAN/UPC - Product/Case	8711500881052
Numerator - Packs per outer box	12
EAN/UPC - Case	8727900834239

Dimensional drawing



Product	D1	C1	A1	A2	B1	B2
HF-P 1/226 PL-T/C III 220-240V	4.2 mm	30.0 mm	103.8 mm	93.5 mm	67.8 mm	57.5 mm

