

PrimaVision Mini for CDM

HID-PV m 50 /S CDM HPF 220-240V 50/60Hz

Miniature HID electronic gear for PGJ5 CDM lamps – freeing up the boundaries of creativity and innovation in luminaire design

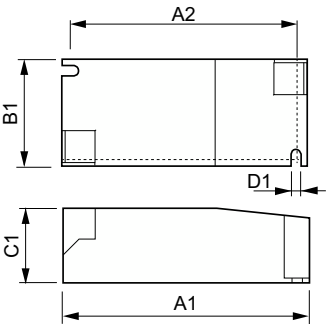
Product data

Operating and Electrical	
Input Voltage	220 to 240 V
Line Frequency	50 to 60 Hz
Input Frequency	50 to 60 Hz
Earth Leakage Current (Max)	0.25 mA
Inrush Current Width	0.40 ms
Inrush Current Peak (Max)	25 A
Number of Products on MCB (16A Type B) (Nom)	24
Wiring	
Cable Length From Device to Lamp	0.5 m
Connector Type	Insert
Temperature	
Ambient temperature range	-20 °C to 50 °C
T-Case Lifetime (Nom)	75 °C
T-Case Maximum (Max)	80 °C
Mechanical and Housing	
Housing	/S

Approval and Application	
Approval Marks	F-Marking CE marking ENEC certificate VDE certificate
Product Data	
Order product name	HID-PV m 50 /S CDM HPF 220-240V 50/60Hz
Full product name	HID-PV m 50 /S CDM HPF 220-240V 50/60Hz
Full product code	871829111573100
Order code	913700665966
Material Nr. (12NC)	913700665966
Numerator - Quantity Per Pack	1
EAN/UPC - Product/Case	8718291115731
Numerator - Packs per outer box	12
EAN/UPC - Case	8718291115748

PrimaVision Mini for CDM

Dimensional drawing



Product	D1	C1	A1	A2	B1
HID-PV m 50 /S CDM HPF 220-240V 50/60Hz	4.2 mm	30.2 mm	97.3 mm	88.3 mm	43.3 mm

