

AspiraVision Compact for CDM

HID-AV C 35-70 /S CDM 220-240V 50/60Hz

AspiraVision is the mark of excellence in HID electronic gear technology – high-end, compact, lightweight and easy to use, with added features for optimal performance of 35, 50 and 70 W CDM lamps. The recently added switching function provides maximum flexibility for users by integrating three different wattage choices into a single driver.

Product data

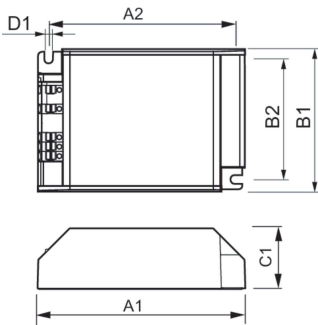
Operating and Electrical	
Input Voltage	220 to 240 V
Line Frequency	50 to 60 Hz
Input Frequency	50 to 60 Hz
Earth Leakage Current (Max)	0.25 mA
Inrush Current Width	10 ms
Inrush Current Peak (Max)	8 A
Number of Products on MCB (16A Type B) (Nom)	58
Wiring	
Cable Length From Device to Lamp	2 m
Connector Type	WAGO series 804
Temperature	
Ambient temperature range	-20 °C to 55 °C
T-Case Lifetime (Nom)	80 °C

Controls and Dimming	
Control Interface	-
Mechanical and Housing	
Housing	/S
Approval and Application	
Surge Protection (Common/Differential)	EN61547 (L-L 2kV, L-G 4kV) kV
Safety Standard	EN 61347-2-12 and 2-1
Environmental Standard	ISO 14001
Approval Marks	F-Marking CE marking ENEC certificate VDE certificate CB Certificate VDE-EMC marking
Product Data	
Order product name	HID-AV C 35-70 /S CDM 220-240V 50/60Hz
Full product name	HID-AV C 35-70 /S CDM 220-240V 50/60Hz
Full product code	871829123310700
Order code	913700683866
Material Nr. (12NC)	913700683866
Numerator - Quantity Per Pack	1

AspiraVision Compact for CDM

EAN/UPC - Product/Case	8718291233107
Numerator - Packs per outer box	12
EAN/UPC - Case	8718291233114

Dimensional drawing



Product	D1	C1	A1	A2	B1	B2
HID-AV C 35-70 /S CDM 220-240V 50/60Hz	4.5 mm	32.1 mm	110.0 mm	98.5 mm	75.0 mm	63.5 mm

