

# PrimaVision Mini for CDM

## HID-PV m 20 /S CDM 220-240V 50/60Hz

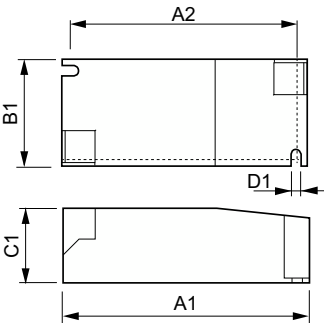
Miniature HID electronic gear for PGJ5 CDM lamps – freeing up the boundaries of creativity and innovation in luminaire design

### Product data

<b>Operating and Electrical</b>		<b>Mechanical and Housing</b>	
Input Voltage	220 to 240 V	Housing	/S
Line Frequency	50 to 60 Hz		
Input Frequency	50 to 60 Hz	<b>Approval and Application</b>	
Earth Leakage Current (Max)	0.5 mA	Approval Marks	CE marking ENEC certificate VDE certificate
Inrush Current Width	0.25 ms	<b>Product Data</b>	
Inrush Current Peak (Max)	15 A	Order product name	HID-PV m 20 /S CDM 220-240V 50/60Hz
Number of Products on MCB (16A Type B) (Nom)	32	Full product name	HID-PV m 20 /S CDM 220-240V 50/60Hz
<b>Wiring</b>		Full product code	871829167159600
Cable Length From Device to Lamp	0.5 m	Order code	913700696066
Connector Type	Insert	Material Nr. (12NC)	913700696066
<b>Temperature</b>		Numerator - Quantity Per Pack	1
Ambient temperature range	-20 °C to 55 °C	EAN/UPC - Product/Case	8718291671596
T-Case Lifetime (Nom)	80 °C	Numerator - Packs per outer box	12
T-Case Maximum (Max)	80 °C	EAN/UPC - Case	8718291671602

PrimaVision Mini for CDM

Dimensional drawing



Product	D1	C1	A1	A2	B1
HID-PV m 20 /S CDM 220-240V 50/60Hz	4.2 mm	30.2 mm	97.3 mm	88.3 mm	43.3 mm

