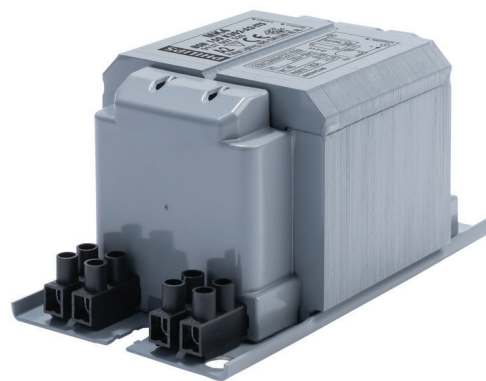


PHILIPS

Lighting



HID-Basic BSN/BMH MK4 semi-parallel for SON/CDO/CDM/MH/ HPI

BSN 150 K302-A2-ITS 230V 50Hz

Impregnated electromagnetic copper ballasts for use with an external semi-parallel ignitor for CDM, CDO, MH, HPI (Plus) and SON lamps

Product data

General Information	
Application code	K302-A2-ITS
Design	BC2-134
Lamp type	SON/MH/CDM/CDO
Number of lamps	1 piece/unit
Operating and Electrical	
Input voltage	230 V
Input frequency	50 Hz
Power factor 100% load (nom.)	0.85
Mains voltage performance (AC)	-8% - +6%
Mains voltage safety (AC)	-10% - +10%
Input current with PF correction	0.85 A
Input current without PF Correction	1.8 A
Power factor without PF compensation (nom.)	0.4

Power losses (nom.)	16.4 W
Wiring	
Wire strip length	6.0 mm
Ballast contact wire cross section	2.5 mm ²
Connector type	Screw
System characteristics	
Rated ballast-lamp power	150 W
Recommended ignitor	for SON/CDO/CDM lamps ignitor SKD 578 (913700655366)
Temperature	
T storage (max.)	130 °C
T storage (min.)	-30 °C
T winding (max.)	140 °C

HID-Basic BSN/BMH MK4 semi-parallel for SON/CDO/CDM/MH/HPI

Delta-T normal conditions	55 °C
---------------------------	-------

Approval and Application

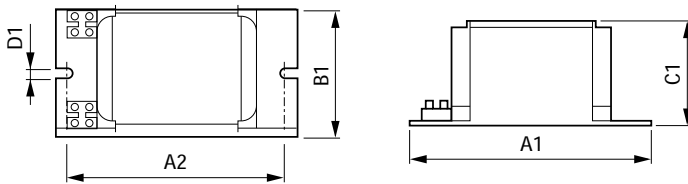
Active temperature protection	Yes
Approval marks	CE marking ENEC certificate

Product Data

Full product code	871869674096500
Order product name	BSN 150 K302-A2-ITS 230V 50Hz

EAN/UPC – product	8718696740965
Order code	74096500
Numerator – quantity per pack	1
Numerator – packs per outer box	6
Material no. (12NC)	913700752626
Net weight (piece)	2.240 kg

Dimensional drawing



Product	A1	A2	B1	C1	D1
BSN 150 K302-A2-ITS 230V 50Hz	134 mm	113 mm	76 mm	65 mm	6.2 mm

BSN 150 K302-A2-ITS 230V 50Hz

