



PrimaVision Economy for CPO

CertaVision CPO90

Highly reliable electronic drivers for CPO lamps; the drivers are designed for outdoor use and consume less energy than conventional alternatives.

Product data

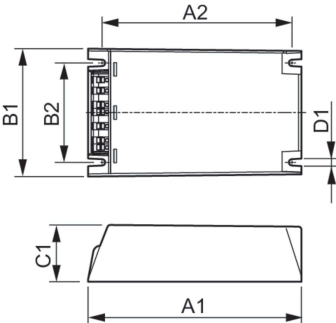
Operating and Electrical	
Input Voltage	208–240–277 V
Line Frequency	50 to 60 Hz
Input Frequency	50 to 60 Hz
Earth Leakage Current (Max)	0.7 mA
Inrush Current Width	0.47 ms
Input Current (Nom)	0.49 A
Inrush Current Peak (Max)	52 A
Number of Products on MCB (16A Type B) (Nom)	5
Wiring	
Cable Length From Device to Lamp	10 m
Connector Type	WAGO series 804
Temperature	
Ambient temperature range	–30 °C to 55 °C
T-Case Lifetime (Nom)	80 °C
Mechanical and Housing	
Housing	Q

Approval and Application	
Surge Protection (Common/Differential)	EN61547 (L–L 2kV, L–G 4kV) kV
Safety Standard	IEC 607, 609, 926, 928 [No Standard for HID Lamp drivers exists. Requirements in these standards to be used if considered relevant for the product.]
Environmental Standard	ISO 14001
Approval Marks	F-Marking CE marking ENEC certificate VDE-EMV certificate

Product Data	
Order product name	CertaVision CPO90
Full product name	CertaVision CPO90
Full product code	871829170493500
Order code	913700760170
Material Nr. (12NC)	913700760170
Numerator - Quantity Per Pack	1
EAN/UPC - Product/Case	8718291704935
Numerator - Packs per outer box	12
EAN/UPC - Case	8718291704942

PrimaVision Economy for CPO

Dimensional drawing



Product
CertaVision CPO90

