



Capacitors for HID lamp circuits

CP 25BU28

Compensating capacitors are AC capacitors designed for individual correction of the power factor of transformers and magnetic ballasts in discharge lamps (e.g. fluorescent lamps, halogen and metal halide lamps, high-pressure mercury lamps, sodium lamps) in mains with a frequency of 50 or 60Hz. This allows for an improvement of the luminary's power factor to $\cos\mu > 0.85$

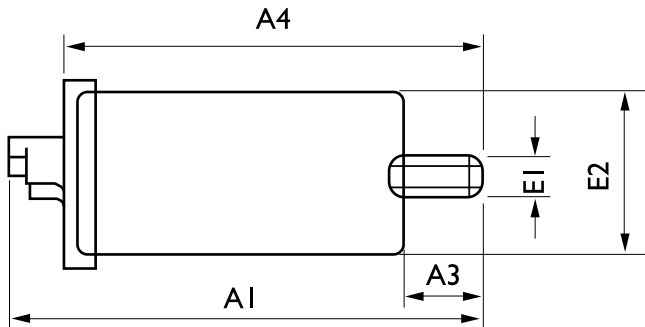
Product data

| General Information | |
|---------------------------------|--|
| Design | Parallel |
| Capacitor Value | 25 |
| Operating and Electrical | |
| Input Voltage | 250 V |
| Input Frequency | 50 to 60 Hz |
| Capacity Tolerance (Max) | 10 % |
| Capacity Tolerance (Min) | -10 % |
| Wiring | |
| Connector Type Output Terminals | push in connector or insulated wires or flat quick-connector |
| Temperature | |
| T-Ambient (Max) | 85 °C |
| T-Ambient (Min) | -40 °C |
| Mechanical and Housing | |
| Housing | M8x10 |

| Approval and Application | |
|---------------------------------|---|
| Approval Marks | Conform GB18489-2001 Conform GB/T18504-2001 CE marking VDE certificate China Quality Certificate CB Certificate |
| Product Data | |
| Full product code | 694818229909300 |
| Order product name | CP 25BU28 |
| EAN/UPC - Product | 6948182295156 |
| Order code | 913710012291 |
| Numerator - Quantity Per Pack | 1 |
| Numerator - Packs per outer box | 90 |
| Material Nr. (12NC) | 913710012291 |
| Net Weight (Piece) | 0.081 kg |

Capacitors for HID lamp circuits

Dimensional drawing



| Product | E2 | A1 | A4 |
|-----------|---------|----------|----------|
| CP 25BU28 | 34.0 mm | 120.0 mm | 108.0 mm |

CP 25CU28

