



Plusline Compact

Plusline C 150W R7s 230V 1CT/10X10F

Mains-voltage linear lamp giving white halogen light

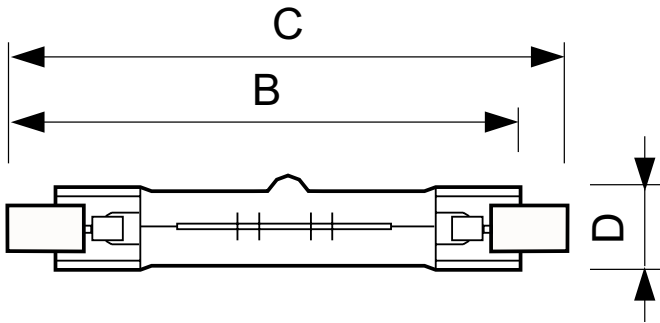
Product data

General Information	
Cap base	R7S [R7s]
Operating position	UNIVERSAL [Any or Universal (U)]
Nominal lifetime (nom.)	2000 h
Light Technical	
Luminous flux (nom.)	2400 lm
Luminous efficacy (rated) (nom.)	16 lm/W
Color rendering index (nom.)	100
Operating and Electrical	
Power (Rated) (Nom)	150 W
Lamp current (nom.)	0.65 A
Starting time (nom.)	0.0 s
Voltage (Nom)	230 V
Controls and Dimming	
Dimmable	Yes
Mechanical and Housing	
Bulb finish	Clear

Cap base information	10
Approval and Application	
Energy efficiency label (EEL)	D
Luminaire Design Requirements	
Bulb temperature (max.)	900 °C
Pinch temperature (max.)	350 °C
Product Data	
Full product code	872790080887200
Order product name	Plusline C 150W R7s 230V 1CT/10X10F
EAN/UPC – product	8727900808872
Order code	80887200
Numerator – quantity per pack	1
Numerator – packs per outer box	100
Material no. (12NC)	923919943202
Net weight (piece)	0.005 kg
ILCOS Code	HDC//RS-150-230-R7s-74.9

Plusline Compact

Dimensional drawing



DEComp 150W R7s 230V T3 CL

Product	D (max)	B (max)	B	B (min)	C (max)
Plusline C 150W R7s 230V 1CT/ 10X10F	15 mm	76.5 mm	74.9 mm	73.3 mm	78.3 mm

