

Other digital cinema projectors

XDC 6500 TA

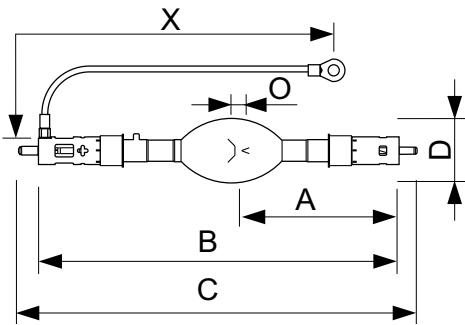
Digital Xenon Cinema TA-type lamps are ideal for today's demanding 3D and 2D digital cinema presentations. There is a choice of four power ratings in the TA-type Digital Cinema Xenon lamps range: 3000W, 4500W, 6000W or 6500W. These lamps produce the very high light output needed to maximize screen brightness and enhance the dramatic effect for the viewer. These long-life digital lamps also provide constant color temperature characteristics, and meet all of the stringent arc-stability requirements for consistent customer satisfaction. In addition to TA-type Digital Cinema Xenon lamps there are B-, C-, N-, and S-type Digital Cinema Xenon lamps. These are all individually customized per projector, so there is a different, perfect-fitting lamp for each projector model to ensure optimized projector performance.

Product data

| General Information | | Product Data | |
|--------------------------|---|---------------------------------|-----------------|
| Operating position | P15 [Parallel +/-15D or Horizontal(HOR)] | Full product code | 872790085629300 |
| Main application | Cinema | Order product name | XDC 6500 TA |
| Nominal lifetime (nom.) | 500 h | EAN/UPC – product | 8727900856293 |
| Magnet | Horizontal required | Order code | 85629300 |
| Operating and Electrical | | Local Code | XDC6500TA |
| Power (Rated) (Nom) | 6500 W | Numerator – quantity per pack | 1 |
| Lamp current span | 140/175 A | Numerator – packs per outer box | 1 |
| Lamp current (nom.) | 170 A | Material no. (12NC) | 928414606301 |
| Voltage (Nom) | 38 V | Net weight (piece) | 1.165 kg |

Other digital cinema projectors

Dimensional drawing



LTIX XDC 6500W TA

| Product | O | D | X | B (max) | C (max) | A |
|-------------|--------|-------|--------|---------|---------|----------|
| XDC 6500 TA | 7.5 mm | 70 mm | 400 mm | 391 mm | 433 mm | 170.5 mm |

