



# Barco digital cinema projectors

## XDC-6500BI

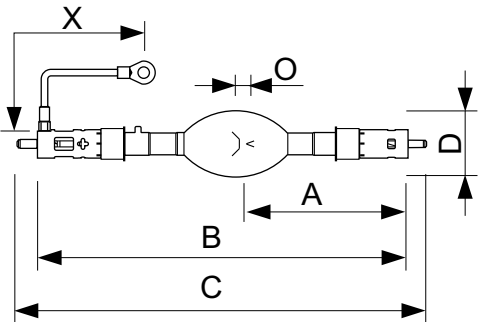
Digital Xenon Cinema B-type lamps are ideal for today's demanding 3D and 2D digital cinema presentations. They are especially designed for Barco projectors. There is a choice of three power ratings in the B-type Digital Xenon Cinema lamps range: 3000W, 4000W, or 6500W. There is also a choice of three power ratings in the BH-type Digital Helios lamps: 2000W, 3000W, and 4200W power ratings. All these lamps produce the very high light output needed to maximize screen brightness and enhance the dramatic effect for the viewer. These long-life digital lamps also provide constant color temperature characteristics, and meet all of the stringent arc-stability requirements for consistent customer satisfaction. In addition to B-type Digital Cinema Xenon lamps there are C-, N-, S-, and TA-type Digital Cinema Xenon lamps. These are all individually customized per projector, so there is a different, perfect-fitting lamp for each projector model to ensure optimized projector performance.

### Product data

General Information	
Operating position	P15 [ Parallel +/-15D or Horizontal(HOR)]
Main application	Cinema
Nominal lifetime (nom.)	500 h
Magnet	Horizontal required
Operating and Electrical	
Power (Rated) (Nom)	6500 W
Lamp current span	105/175 A
Lamp current (nom.)	170 A
Voltage (Nom)	38 V

Product Data	
Full product code	871869644147300
Order product name	XDC-6500BI
EAN/UPC – product	8718696441473
Order code	44147300
Local Code	XDC6500BI
Numerator – quantity per pack	1
Numerator – packs per outer box	1
Material no. (12NC)	928418606301
Net weight (piece)	1165.000 g

Dimensional drawing



LTIX XDC 6500 BI

Product	O	D	X	B (max)	C (max)	A
XDC-6500BI	7.5 mm	70 mm	152 mm	391 mm	433 mm	170.5 mm

