



MHN-TD

MHN-TD 150W/730 RX7s 1CT/12

Double-envelope, single- or double-ended Metal halide lamps

Warnings and Safety

- Use only in totally enclosed luminaire, even during testing (IEC61167, IEC 62035, IEC60598)
- The luminaire must be able to contain hot lamp parts if the lamp ruptures
- Control gear must include end-of-life protection (IEC61167, IEC 62035)
- A lamp breaking is extremely unlikely to have any impact on your health. If a lamp breaks, ventilate the room for 30 minutes and remove the parts, preferably with gloves. Put them in a sealed plastic bag and take it to your local waste facilities for recycling. Do not use a vacuum cleaner.

Product data

| General Information | |
|------------------------------------|--|
| Cap-Base | RX7s |
| Operating Position | P45 [Parallel +/-45D or Horizontal(HOR)] |
| Flux measurement reference | Sphere |
| Life to 50% Failures (Nom) | 10,500 hour(s) |
| Light Technical | |
| Color Code | 730 [CCT of 3000K] |
| Luminous Flux | 13,400 lm |
| Color Designation | Warm White (WW) |
| Chromaticity Coordinate X (Nom) | 0.434 |
| Chromaticity Coordinate Y (Nom) | 0.398 |
| Correlated Color Temperature (Nom) | 3000 K |
| Luminous Efficacy (Rated) (Min) | 81 lm/W |
| Luminous Efficacy (rated) (Nom) | 90 lm/W |
| Color rendering index (CRI) | 67 |
| Arc Length O (Nom) | 17.8 mm |

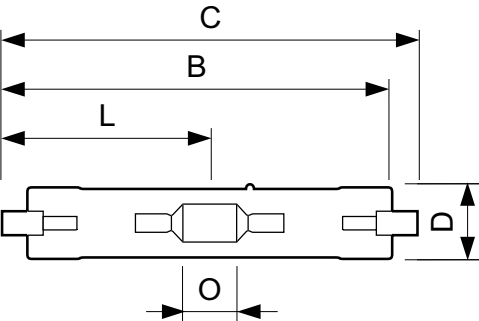
| Operating and Electrical | |
|-------------------------------|---------|
| Power Consumption | 155.0 W |
| Voltage (Nom) | 96 V |
| Voltage (Nom) | 96 V |
| Controls and Dimming | |
| Dimmable | No |
| Mechanical and Housing | |
| Bulb Finish | Clear |
| Bulb Shape | TD |
| Approval and Application | |
| Energy Efficiency Class | G |
| Mercury (Hg) Content (Max) | 18 mg |
| Mercury (Hg) Content (Nom) | 18 mg |
| Energy Consumption kWh/1000 h | 155 kWh |

MHN-TD

| | |
|---------------------------|-----------------------------|
| EPREL Registration Number | 473287 |
| Product Data | |
| Order product name | MHN-TD 150W/730 RX7s 1CT/12 |
| Full product name | MHN-TD 150W/730 RX7s 1CT/12 |
| Full product code | 871829121534900 |
| Order code | 928482500092 |

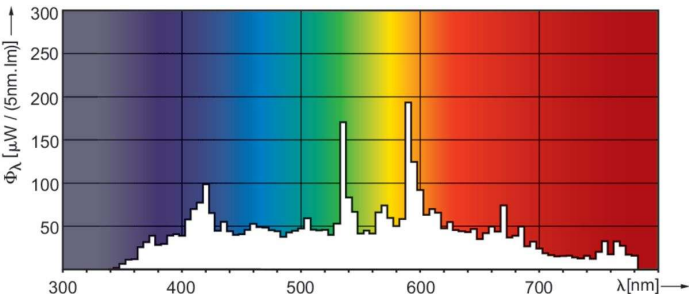
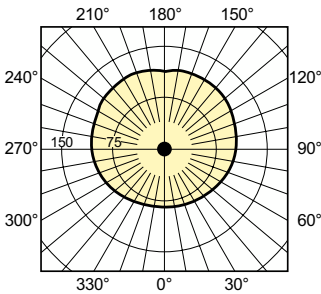
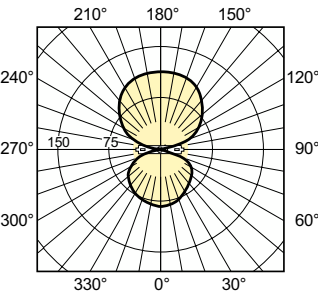
| | |
|---------------------------------|---------------|
| Material Nr. (12NC) | 928482500092 |
| Numerator - Quantity Per Pack | 1 |
| EAN/UPC - Product/Case | 8718291215349 |
| Numerator - Packs per outer box | 12 |
| EAN/UPC - Case | 8718291215356 |

Dimensional drawing



| Product | D (max) | D | O | C (max) |
|-----------------------------|---------|-----------|---------|----------|
| MHN-TD 150W/730 RX7s 1CT/12 | 23.0 mm | 0.89 inch | 17.8 mm | 135.4 mm |

Photometric data



Light Distribution Diagram - MHN-TD 150W/730 RX7s 1CT/12

Spectral Power Distribution Colour - MHN-TD 150W/730 RX7s 1CT/12

