



# Energy Advantage CDM Lamps with AllStart Technology E-Rated

## CDM145/U/4K/ED17 EA Allstart

Philips Energy Advantage CDM AllStart E-rated lamps provide energy savings without compromising light quality.

### Product data

General Information			
Base	E26 [ Single Contact Medium Screw]	Chromaticity Coordinate X (Nom)	0.374
Operating Position	Universal [ Universal]	Chromaticity Coordinate Y (Max)	0.400
Life to 50% Failures (Nom)	20000 h	Chromaticity Coordinate Y (Min)	0.360
ANSI Code HID	C192/E	Chromaticity Coordinate Y (Nom)	0.380
Features	Energy Advantage AllStart	Correlated Color Temperature (Nom)	4200 K
		Luminous Efficacy (Rated) (Min)	88 lm/W
		Luminous Efficacy (rated) (Nom)	96 lm/W
		Color Rendering Index (Min)	-
		Color Rendering Index (Nom)	81
Light Technical		Operating and Electrical	
Color Code	843 [ CCT of 4300K]	Lamp Current (Nom)	1.45 A
Luminous Flux (Rated) (Min)	12760 lm	Ignition Supply Voltage (Nom)	283 V
Luminous Flux (Rated) (Nom)	13920 lm	Re-Ignition Time (Min) (Nom)	17.5 min
Color Designation	4300 Kelvin	Ignition Time (Max)	120 s
Lumen Maintenance - 40% Life	80 %	Voltage (Max)	138 V
Lumen Maintenance - 10% Life	90 %	Voltage (Min)	108 V
Design Mean Lumens	11136 lm		
Chromaticity Coordinate X (Max)	0.390		
Chromaticity Coordinate X (Min)	0.358		

# Energy Advantage CDM Lamps with AllStart Technology E-Rated

Voltage (Nom)	123 V
<b>Mechanical and Housing</b>	
Bulb Finish	Clear
Overall Length (Max)	5.4 in
<b>Approval and Application</b>	
Picogram Per Lumen Hour	179.7 pg/lm.h
Mercury (Hg) Content (Max)	42 mg
<b>UV</b>	
Pet (Niosh) (Nom)	151.2 h/500lx
Damage Factor D/fc (Nom)	0.44

<b>Luminaire Design Requirements</b>	
Bulb Temperature (Max)	400 °C
Cap-Base Temperature (Nom)	136 °C
<b>Product Data</b>	
Order product name	CDM145/U/4K/ED17 EA Allstart
EAN/UPC - Product	046677411060
Order code	411066
Numerator - Quantity Per Pack	1
Numerator - Packs per outer box	12
Material Nr. (12NC)	928601168401
Net Weight (Piece)	0.044 kg

## Warnings and Safety

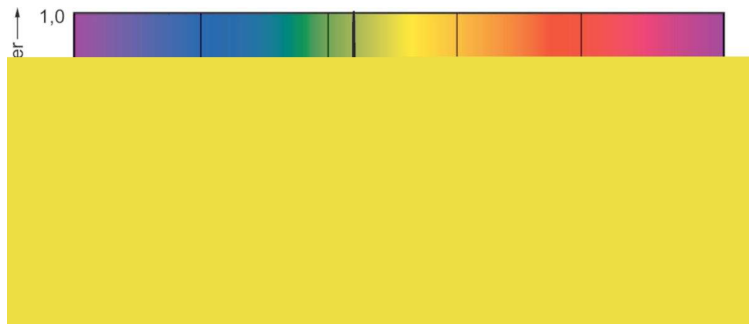
## Dimensional drawing



Product	D	D	L (min)	L (max)	L	C
CDM145/U/4K/ED17 EA Allstart	2.125 in	54 mm	83 mm	89 mm	86 mm	5.4 in

CDMAllstar 145W/843 ED17 CL EA AllStart

## Photometric data



# Energy Advantage CDM Lamps with AllStart Technology E-Rated

## Lifetime

