



T8

14T8/48-4000 IF 10/1 DIM TAA/NAFTA

Our TLEDs are available in InstantFit (Type A / Type C) or MainsFit (Ballast bypass / Type B) versions. The InstantFit lamps work on a broad variety of ballasts and LED drivers. Only InstantFit has over 15,000 lamp & ballast combinations delivering even light output, energy savings and a long lifetime. Our MainsFit products feature a double-ended design, simplifying installation while a proprietary safety circuit minimizes a shock risk. Lamp sizes range from 2-foot to 8-foot and U-bend with a variety of lumen outputs.

Product data

General Information	
Cap-Base	G13 [Medium Bi-Pin Fluorescent]
EU RoHS compliant	Yes
Nominal Lifetime (Nom)	50000 h
Switching Cycle	50000X
Light Technical	
Color Code	840 [CCT of 4000K]
Luminous Flux (Nom)	2100 lm
Correlated Color Temperature (Nom)	4000 K
Color Consistency	<6
Color Rendering Index (Nom)	82
LLMF At End Of Nominal Lifetime (Nom)	70 %
Operating and Electrical	
Input Frequency	50 to 60 Hz
Power (Nom)	14 W
Starting Time (Nom)	0.5 s
Warm Up Time to 60% Light (Nom)	0.5 s

UL Type	Type A - works on ballast Type C - works with dedicated LED driver Type A+C - works with both ballasts and the LED driver
Power Factor (Nom)	0.9
Voltage (Nom)	120-277, 347 V
Temperature	
T-Ambient (Max)	45 °C
T-Ambient (Min)	-20 °C
T-Storage (Max)	65 °C
T-Storage (Min)	-40 °C
T-Case Maximum (Nom)	45 °C
Controls and Dimming	
Dimmable	Yes
Mechanical and Housing	
Product Length	1200 mm

T8

Approval and Application

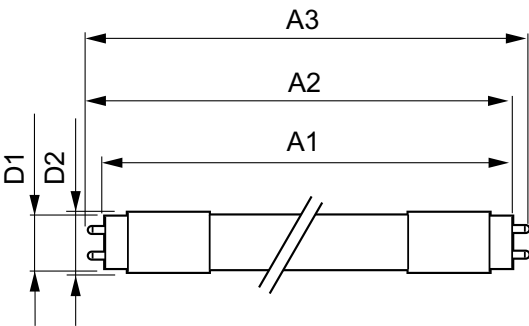
Energy Efficiency Label (EEL)	Not applicable
Energy Saving Product	Yes
Approval Marks	UL certificate RoHS compliance DLC compliance
Energy Certifications	DLC Standard

Product Data

Order product name	14T8/48-4000 IF 10/1 DIM TAA/NAFTA
--------------------	------------------------------------

EAN/UPC - Product	046677472665
Order code	929001158784
Numerator - Quantity Per Pack	1
Numerator - Packs per outer box	10
Material Nr. (12NC)	929001158784
Net Weight (Piece)	0.001 kg

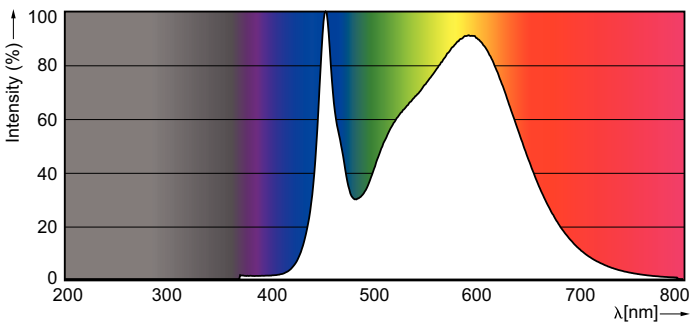
Dimensional drawing



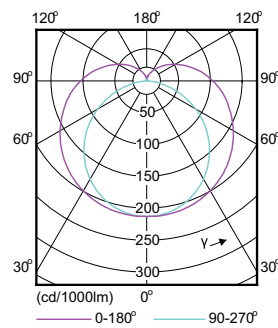
LEDtube 1200mm 15W/840

Product	D1	D2	A1	A2	A3
14T8/48-4000 IF 10/1 DIM TAA/NAFTA	25.7 mm	28 mm	1198.0 mm	1205.0 mm	1212.0 mm

Photometric data

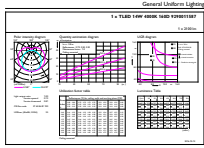


LEDtube 1200mm 15W G13 T8 840 2100lm



LEDtube 1200mm 15W G13 T8 840 2100lm

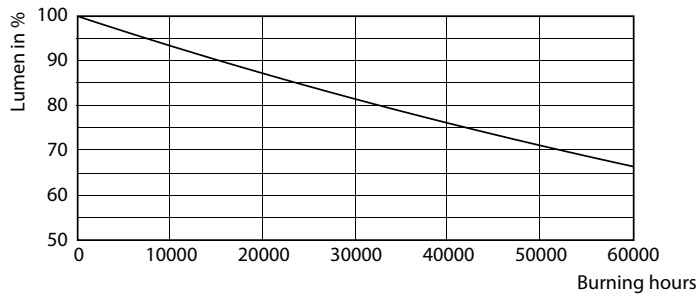
Photometric data



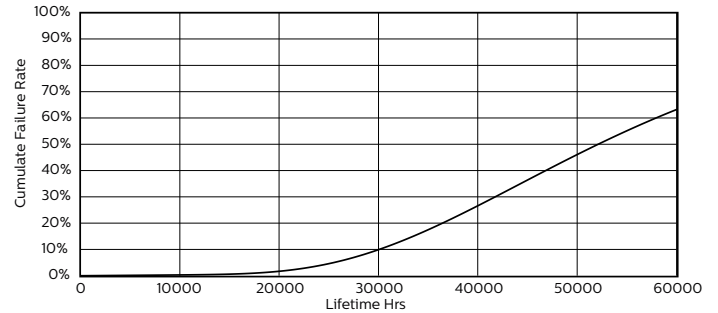
General Information 41 Philips Lighting B.V. Page 17

LEDtube 1200mm 15W G13 T8 840 2100lm

Lifetime



LEDtube HF 1500mm 26W G5 T5



LEDtube 1200mm 14-32W G13

