



MASTER LEDtube EM/ Mains T8

MASTER LEDtube 1800mm 25W 840 T8 ROT

The Philips MASTER LEDtube integrates a LED light source into a traditional fluorescent form factor. Its unique design creates a perfectly uniform visual appearance which cannot be distinguished from traditional fluorescent. For those that are looking for value for money within limited budget and re-lamping efforts for better light effect and lifetime.

Product data

General Information		Power Factor (Nom)		0.9	
Cap-Base	G13 [Medium Bi-Pin Fluorescent]	Voltage (Nom)		220-240 V	
EU RoHS compliant	Yes	Temperature			
Nominal Lifetime (Nom)	50000 h	T-Ambient (Max)	30 °C		
Switching Cycle	50000X	T-Ambient (Min)	-5 °C		
Light Technical		T-Storage (Max)	65 °C		
Color Code	840 [CCT of 4000K]	T-Storage (Min)	-40 °C		
Beam Angle (Nom)	160 °	T-Case Maximum (Nom)	61 °C		
Luminous Flux (Nom)	3700 lm	Controls and Dimming			
Correlated Color Temperature (Nom)	4000 K	Dimmable	No		
Color Consistency	<6	Mechanical and Housing			
Color Rendering Index (Nom)	83	Product Length	1800 mm		
LLMF At End Of Nominal Lifetime (Nom)	70 %	Approval and Application			
Operating and Electrical		Energy Efficiency Label (EEL)	A++		
Input Frequency	50 to 60 Hz	Energy Saving Product	Yes		
Power (Nom)	25 W	Suitable For Accent Lighting	No		
Starting Time (Nom)	0.5 s				
Warm Up Time to 60% Light (Nom)	instant full light s				

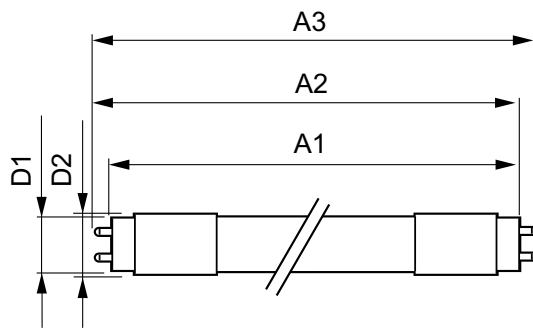
MASTER LEDtube EM/Mains T8

Approval Marks	CE marking RoHS compliance KEMA Keur certificate
Energy Consumption kWh/1000 h	25 kWh
Product Data	
Full product code	871869648037300
Order product name	MASTER LEDtube 1800mm 25W 840 T8 ROT
EAN/UPC - Product	8718696480373

Order code	929001161102
Numerator - Quantity Per Pack	1
Numerator - Packs per outer box	10
Material Nr. (12NC)	929001161102
Net Weight (Piece)	0.500 kg

Warnings and Safety

Dimensional drawing



LEDtube 1800mm 25W/840 T8 ROT

Product	D1	D2	A1	A2	A3
MASTER LEDtube 1800mm 25W 840 T8 ROT	25.68 mm	28 mm	1762.5 mm	1770 mm	1776.7 mm

Photometric data

