



CorePro Plastic LEDbulbs

CorePro LEDbulb ND 10-75W A60 E27 865

CorePro LEDbulbs are compatible with existing fixtures with an E27 or B22 holder and are designed for retrofit replacement of incandescent bulbs. They deliver huge energy savings and minimize maintenance cost.

Product data

General Information			
Cap-Base	E27 [E27]	Input Frequency	50 to 60 Hz
Nominal lifetime	15,000 hour(s)	Power Consumption	10 W
Switching Cycle	50,000	Lamp Current (Nom)	95 mA
Lighting Technology	LED	Wattage Equivalent	75 W
Flux measurement reference	Sphere	Starting Time (Nom)	0.5 s
EU RoHS compliant	Yes	Warm-up time to 60% light	0.5 s
		Power Factor (Fraction)	0.5
		Voltage (Nom)	220-240 V
Light Technical		Temperature	
Color Code	865 [CCT of 6500K]	T-Case Maximum (Nom)	80 °C
Beam Angle (Nom)	200 degree(s)	Controls and Dimming	
Luminous Flux	1,055 lm	Dimmable	No
Color Designation	Cool Daylight	Mechanical and Housing	
Correlated Color Temperature (Nom)	6500 K	Bulb Finish	Frosted
Luminous Efficacy (rated) (Nom)	105.00 lm/W	Bulb Shape	A60 [A 60mm]
Color Consistency	<6	Approval and Application	
Color rendering index (CRI)	80	Energy Efficiency Class	F
LLMF At End Of Nominal Lifetime (Nom)	70 %		
Operating and Electrical			
Line Frequency	50 to 60 Hz		

CorePro Plastic LEDbulbs

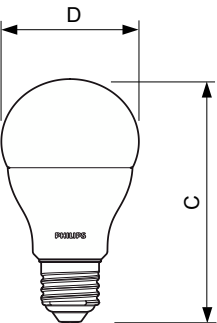
Energy Consumption kWh/1000 h	10 kWh
EPREL Registration Number	397620
EyeComfort	Yes

Product Data

Order product name	CorePro LEDbulb ND 10-75W A60 E27 865
Full product name	CorePro LEDbulb ND 10-75W A60 E27 865
Full product code	871869649758600

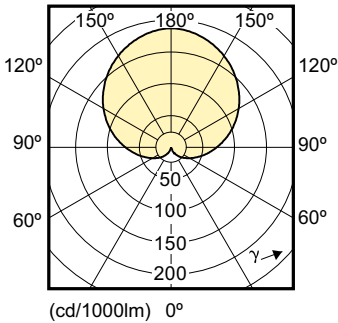
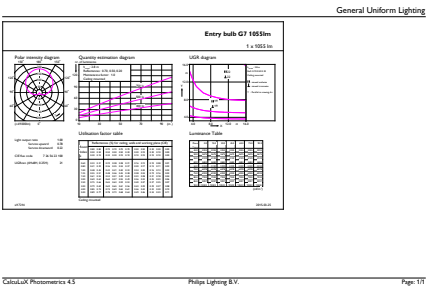
Order code	49758600
Material Nr. (12NC)	929001163832
Numerator - Quantity Per Pack	1
EAN/UPC - Product/Case	8718696497586
Numerator - Packs per outer box	10
EAN/UPC - Case	8718696497593

Dimensional drawing



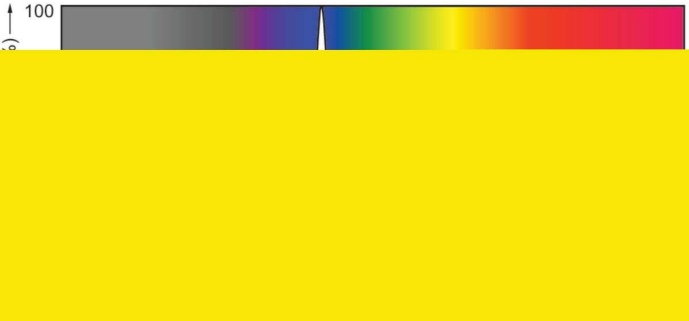
Product	D	C
CorePro LEDbulb ND 10-75W A60 E27 865	60 mm	110 mm

Photometric data



General uniform lighting - CorePro LEDbulb ND 10-75W A60 E27 865

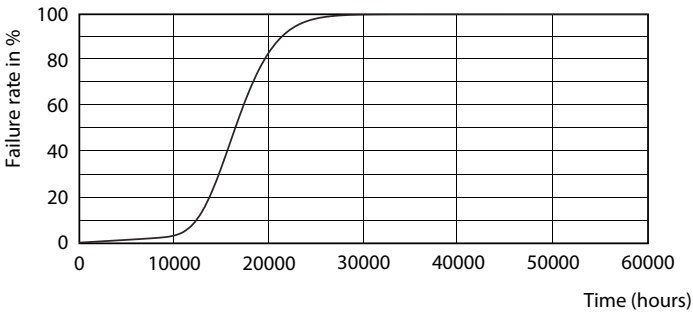
Light Distribution Diagram - CorePro LEDbulb ND 10-75W A60 E27 865



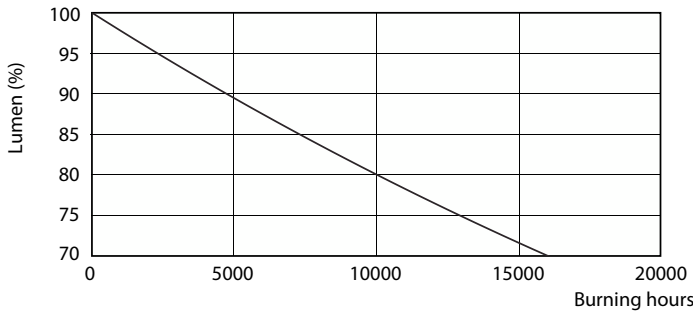
Spectral Power Distribution Colour - CorePro LEDbulb ND 10-75W A60 E27 865

CorePro Plastic LEDbulbs

Lifetime



Life Expectancy Diagram - CorePro LEDbulb ND 10-75W A60 E27 865



Lumen Maintenance Diagram - CorePro LEDbulb ND 10-75W A60 E27 865

