



MASTER LEDtube EM/ Mains

Master LEDTube 1200 mm 18W 865 T8 I W

The Philips MASTER LEDtube integrates a LED light source into a traditional fluorescent form factor. Its unique design creates a perfectly uniform visual appearance which cannot be distinguished from traditional fluorescent. For those that are looking for value for money within limited budget and re-lamping efforts for better light effect and lifetime.

Product data

| General Information | |
|---------------------------------------|----------------------------------|
| Cap-Base | G13 [Medium Bi-Pin Fluorescent] |
| EU RoHS compliant | Yes |
| Nominal Lifetime (Nom) | 40000 h |
| Switching Cycle | 50000X |
| Light Technical | |
| Color Code | 865 [CCT of 6500K] |
| Beam Angle (Nom) | 160 ° |
| Luminous Flux (Nom) | 2100 lm |
| Correlated Color Temperature (Nom) | 6500 K |
| Color Consistency | <6 |
| Color Rendering Index (Nom) | 82 |
| LLMF At End Of Nominal Lifetime (Nom) | 70 % |
| Operating and Electrical | |
| Input Frequency | 50 to 60 Hz |
| Power (Rated) (Nom) | 18 W |
| Starting Time (Nom) | 0.5 s |
| Warm Up Time to 60% Light (Nom) | instant full light s |
| Power Factor (Nom) | 0.92 |
| Voltage (Nom) | 100-240 V |
| Temperature | |
| T-Ambient (Max) | 45 °C |
| T-Ambient (Min) | -20 °C |
| T-Storage (Max) | 65 °C |
| T-Storage (Min) | -40 °C |
| T-Case Maximum (Nom) | 70 °C |
| Controls and Dimming | |
| Dimmable | No |
| Mechanical and Housing | |
| Product Length | 1200 mm |
| Approval and Application | |
| Energy Efficiency Label (EEL) | A+ |
| Energy Saving Product | Yes |
| Suitable For Accent Lighting | No |

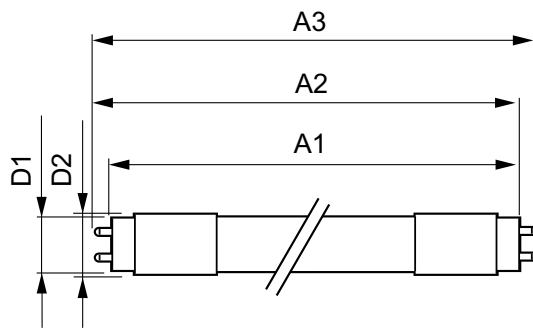
MASTER LEDtube EM/Mains

| | |
|-------------------------------|--|
| Approval Marks | CE marking RoHS compliance KEMA Keur certificate |
| Energy Consumption kWh/1000 h | 18 kWh |
| Product Data | |
| Full product code | 871869652406000 |
| Order product name | Master LEDTube 1200 mm 18W 865 T8 I W |
| EAN/UPC - Product | 8718696524060 |

| | |
|---------------------------------|--------------|
| Order code | 929001187812 |
| Numerator - Quantity Per Pack | 1 |
| Numerator - Packs per outer box | 10 |
| Material Nr. (12NC) | 929001187812 |
| Net Weight (Piece) | 0.230 kg |

Warnings and Safety

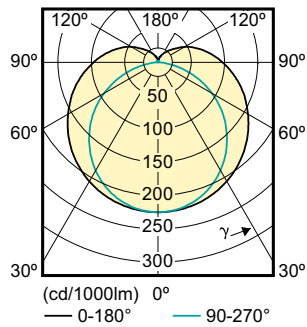
Dimensional drawing



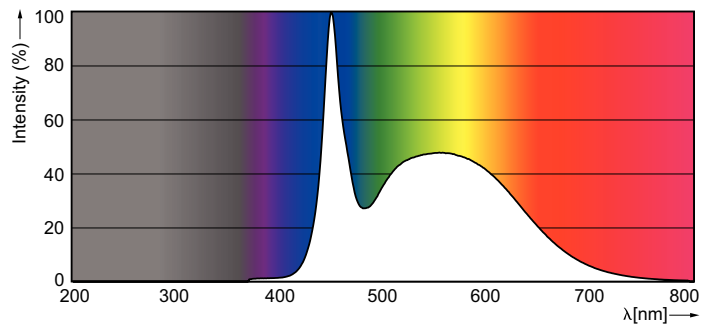
LEDtube 1200mm 18W/865 T8 I W

| Product | D1 | D2 | A1 | A2 | A3 |
|---------------------------------------|---------|---------|-----------|-----------|-----------|
| Master LEDTube 1200 mm 18W 865 T8 I W | 25.6 mm | 27.8 mm | 1198.1 mm | 1205.2 mm | 1212.3 mm |

Photometric data



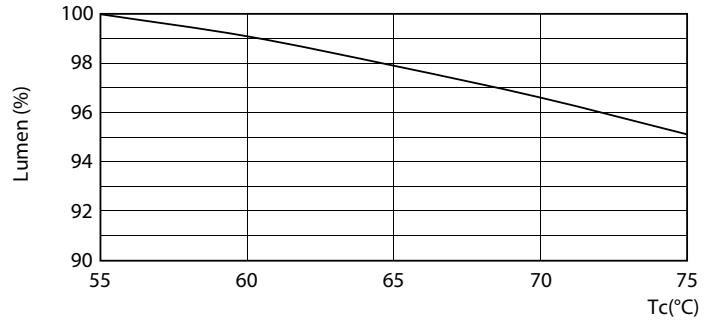
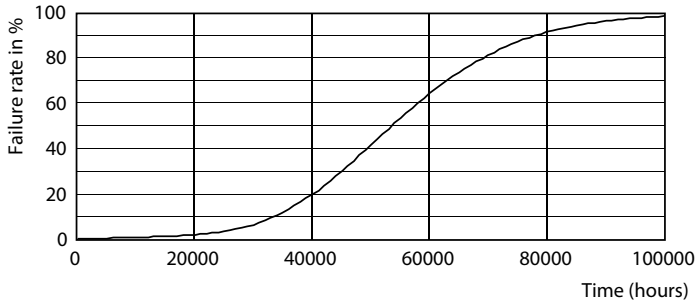
LEDtube 1200mm 18 W T8 I W



LEDtube 1200mm 18 W /865 T8 I W

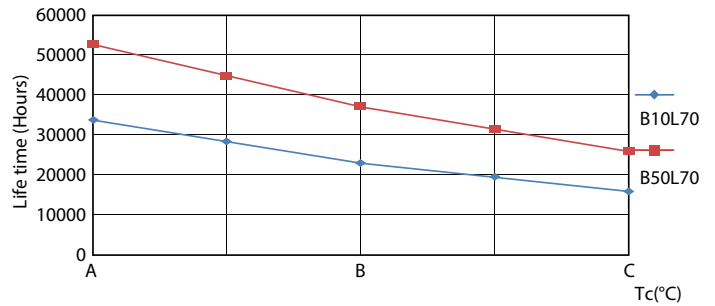
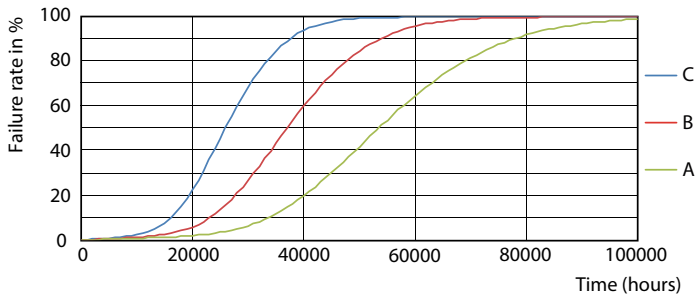
MASTER LEDtube EM/Mains

Lifetime



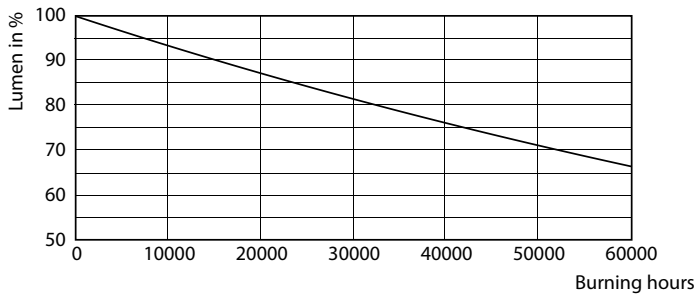
LEDTube 1200 mm 18W 840 T8 I W

LEDTube 1200 mm 18W 840 T8 I W LumenVsTc



LEDTube 1200 mm 18W 840 T8 I W FailureRate

LEDTube 1200 mm 18W 840 T8 I W LifetimeVsTc



LEDTube 1200 mm 18W 840 T8 I W

MASTER LEDtube EM/Mains

