



CorePro LED PLC 4P

CorePro LED PLC 6.5W 840 4P G24q-2

The CorePro LED PLC 4P integrates a LED light source into a traditional fluorescent form factor. This product is the ideal solution for uplamping in general lighting applications: it meets basic lighting requirements, offers significant energy savings, and is environmentally friendly.

Product data

General Information	
Cap-Base	G24q-2
Nominal lifetime	30,000 hour(s)
Switching Cycle	50,000
Lighting Technology	LED
Flux measurement reference	Sphere
CE mark	Yes
EU RoHS compliant	Yes

Light Technical	
Color Code	840 [CCT of 4000K]
Beam Angle (Nom)	120 degree(s)
Luminous Flux	700 lm
Color Designation	Cool White (CW)
Correlated Color Temperature (Nom)	4000 K
Luminous Efficacy (rated) (Nom)	92.31 lm/W
Color Consistency	<6
Color rendering index (CRI)	83
LLMF At End Of Nominal Lifetime (Nom)	70 %
Photobiological safety according to EN 62471	RG0

Operating and Electrical	
Line Frequency	30000-80000 Hz

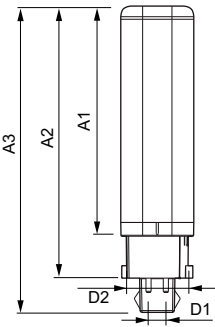
Input Frequency	30000-80000 Hz
Power Consumption	6.5 W
Lamp Current (Max)	300 mA
Lamp Current (Min)	150 mA
Starting Time (Nom)	0.5 s
Warm-up time to 60% light	0.5 s
Power Factor (Fraction)	0.9
Voltage (Nom)	20-50 V
LED alternative to fluorescent lamp power	18 W
Inrush current at mains	-
Max. lamp no. on MCB B type 10A - Mains	-
Max. lamp no. on MCB B type 10A - EM ballast without Comp. Cap.	-
Max. lamp no. on MCB B type 10A - EM ballast with Comp. Cap.	-
Max. lamp no. on MCB B type 16A - Mains	-
Max. lamp no. on MCB B type 16A - EM ballast without Comp. Cap.	-
Max. lamp no. on MCB B type 16A - EM ballast with Comp. Cap.	-
Ballast Compatibility	HF

CorePro LED PLC 4P

Temperature	
Ambient temperature range	-20 °C to 35 °C
T-Case Maximum (Nom)	66 °C
Controls and Dimming	
Dimmable	No
Mechanical and Housing	
Product Length	100 mm
Bulb Shape	PL-C
Approval and Application	
Energy Efficiency Class	F
Energy Saving Product	Yes
Approval Marks	TUV CE marking RoHS compliance KEMA Keur certificate
Energy Consumption kWh/1000 h	7 kWh

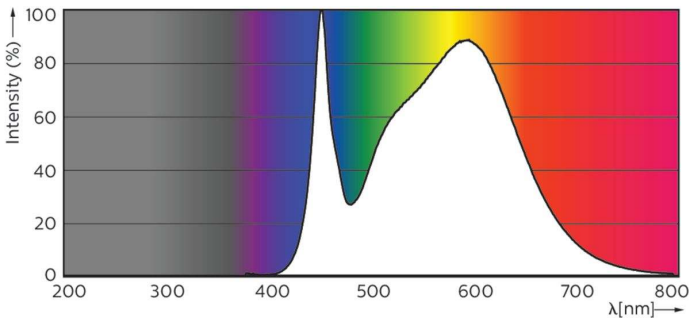
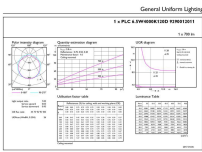
EPREL Registration Number	403553
Product Data	
Order product name	CorePro LED PLC 6.5W 840 4P G24q-2
Full product name	CorePro LED PLC 6.5W 840 4P G24q-2
Full product code	871869654121000
Order code	54121000
Material Nr. (12NC)	929001201102
Numerator - Quantity Per Pack	1
EAN/UPC - Product/Case	8718696541210
Numerator - Packs per outer box	10
EAN/UPC - Case	8718696541227

Dimensional drawing



Product	D1	D2	A1	A2	A3
CorePro LED PLC 6.5W 840 4P G24q-2	24.3 mm	28.4 mm	105.8 mm	125 mm	140.6 mm

Photometric data

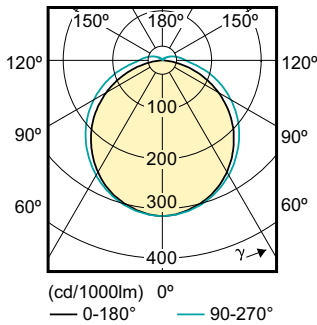


General uniform lighting - CorePro LED PLC 6.5W 840 4P G24q-2

Spectral Power Distribution Colour - CorePro LED PLC 6.5W 840 4P G24q-2

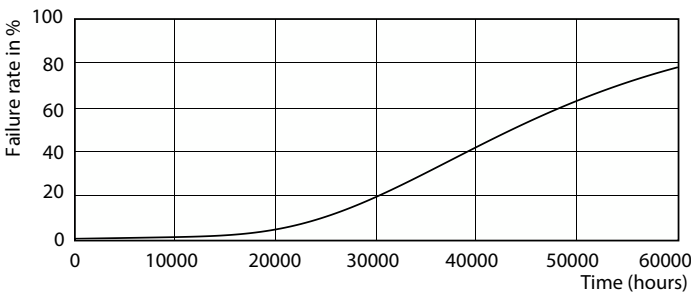
CorePro LED PLC 4P

Photometric data

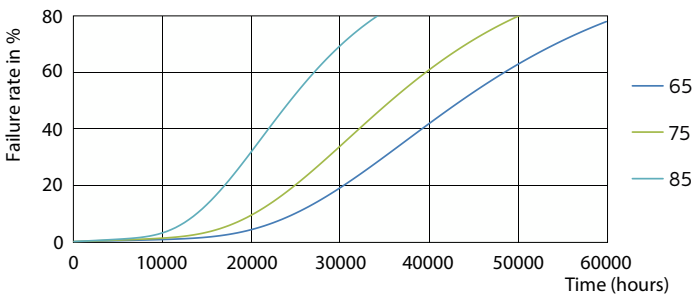


Light Distribution Diagram - CorePro LED PLC 6.5W 840 4P G24q-2

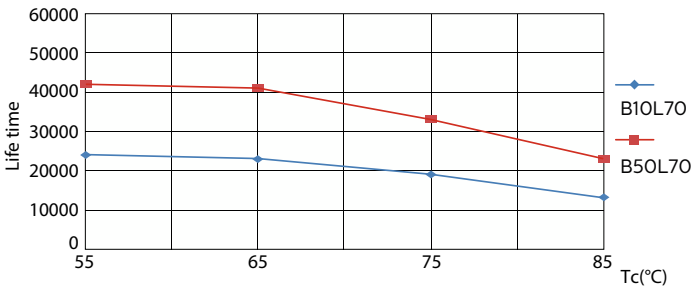
Lifetime



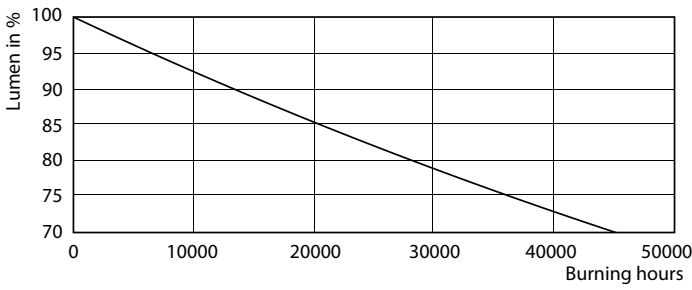
Life Expectancy Diagram - CorePro LED PLC 6.5W 840 4P G24q-2



Life Expectancy Diagram - CorePro LED PLC 6.5W 840 4P G24q-2



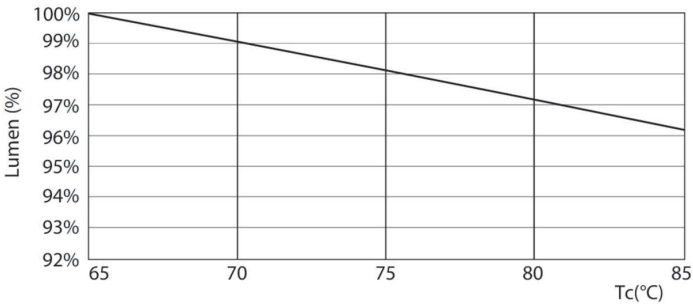
Life Expectancy Diagram - CorePro LED PLC 6.5W 840 4P G24q-2



Lumen Maintenance Diagram - CorePro LED PLC 6.5W 840 4P G24q-2

CorePro LED PLC 4P

Lifetime



Lumen Maintenance Diagram - CorePro LED PLC 6.5W 840 4P G24q-2

