



# Essential LED tubes

## T5 Mains

### CorePro LEDtube 600mm 8W865 G5 I MX

The Essential LEDtube T5 is an affordable LED solution suitable for replacing T5 fluorescent lamps. Thanks to a unique design, Philips Essential LED tube T5 Mains can be directly installed in luminaires operating on mains power connection. The product provides a natural lighting effect for use in general lighting applications, as well as instant energy savings – an environmentally friendly solution.

#### Product data

General Information	
Cap-Base	G5 [G5]
Nominal lifetime	30,000 hour(s)
Switching Cycle	50,000
Lighting Technology	LED
EU RoHS compliant	Yes
Light Technical	
Color Code	865 [CCT of 6500K]
Beam Angle (Nom)	200 degree(s)
Luminous Flux	900 lm
Color Designation	Cool Daylight
Correlated Color Temperature (Nom)	6500 K
Luminous Efficacy (rated) (Nom)	112.00 lm/W
Color Consistency	<6
Color rendering index (CRI)	80
LLMF At End Of Nominal Lifetime (Nom)	70 %
Operating and Electrical	
Line Frequency	50 to 60 Hz

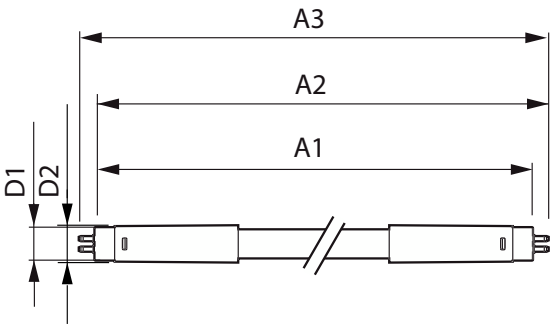
Input Frequency	50 to 60 Hz
Power Consumption	8 W
Lamp Current (Max)	75 mA
Lamp Current (Min)	30 mA
Starting Time (Nom)	0.5 s
Warm-up time to 60% light	0.5 s
Power Factor (Fraction)	0.92
Voltage (Nom)	100-240 V
Temperature	
Ambient temperature range	-20 °C to 45 °C
T-Case Maximum (Nom)	70 °C
Controls and Dimming	
Dimmable	No
Mechanical and Housing	
Bulb Material	Glass
Product Length	600 mm

Essential LED tubes T5 Mains

Bulb Shape	T5
Approval and Application	
Energy Saving Product	Yes
Approval Marks	CE marking RoHS compliance KEMA Keur certificate
Energy Consumption kWh/1000 h	- kWh
Product Data	
Order product name	CorePro LEDtube 600mm 8W865 G5 I MX

Full product name	CorePro LEDtube 600mm 8W865 G5 I MX
Full product code	871869666758300
Order code	929001275512
Material Nr. (12NC)	929001275512
Numerator - Quantity Per Pack	1
EAN/UPC - Product/Case	8718696667583
Numerator - Packs per outer box	20
EAN/UPC - Case	8718696667590

Dimensional drawing



Product	D1	D2	A1	A2	A3
CorePro LEDtube 600mm 8W865 G5 I MX	15.8 mm	19 mm	549 mm	556.1 mm	563.2 mm

